

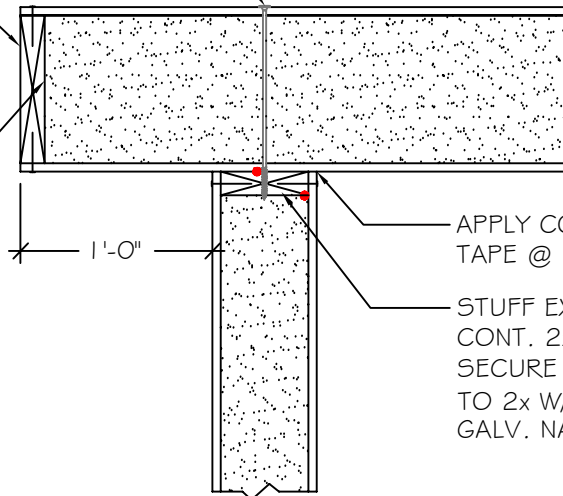
#36

RAKE OVERHANG CONNECTION

ATTACH PANEL TO 2x BLOCKING IN WALL
PANEL W/ 1/2" SIP FASTENERS @ 10" O.C.
TYPICAL UNLESS OTHERWISE NOTED.

STUFF EXPOSED PANEL EDGE W/
CONT. 2x MATERIAL. SECURE OSB
PANEL SKINS TO 2x BLOCKING W/
0.131" DIA. x 2 1/2" LONG GALV.
NAILS @ 4" O.C. OR EQU.

MASTIC NOT REQUIRED



APPLY CORNER AIR SEALING
TAPE @ INT. CORNER.

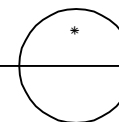
STUFF EXPOSED PANEL EDGE W/
CONT. 2x BLOCKING MATERIAL.
SECURE OSB PANEL SKINS
TO 2x W/ 0.131" DIA. x 2 1/2"
GALV. NAILS @ 4" O.C. OR EQU.

NOTE: ALL RED DOTS - APPLY CONTINUOUS 3/8" DIA.
BEAD OF MASTIC SEALANT AT WOOD & FOAM &
WOOD TO WOOD CONNECTIONS AT INTERIOR SIDE.

DETAILS ARE TYPICAL OF
STANDARD CONDITIONS AND
MAY NOT APPLY TO ALL
PROJECTS. REFER TO FINAL
PROJECT APPROVAL DRAWINGS
FOR SPECIFICATIONS. PLEASE
CONTACT FPI TECHNICAL
DEPARTMENT FOR QUESTIONS
AND/OR CONCERNS.

PANEL RAKE CONNECTION DETAIL

SCALE: 1" = 1'-0"



Foard
PANEL

STRUCTURAL INSULATED PANELS
P.O. Box 185, 53 Slow Drive, W. Chesterfield, NH 03466

WWW.FOARDPANEL.COM

(800) - 644 - 8885