

#15

PANEL TO STEM WALL CONNECTION

ATTACH CLEAT PRIOR TO INSTALLING PANEL INTO PLACE. ATTACH 2x CLEAT PLATE TO DECK W/ 2 ROWS OF 0.131" DIA. x 3/4" LONG GALV. NAILS @ 4" O.C. OR EQU.

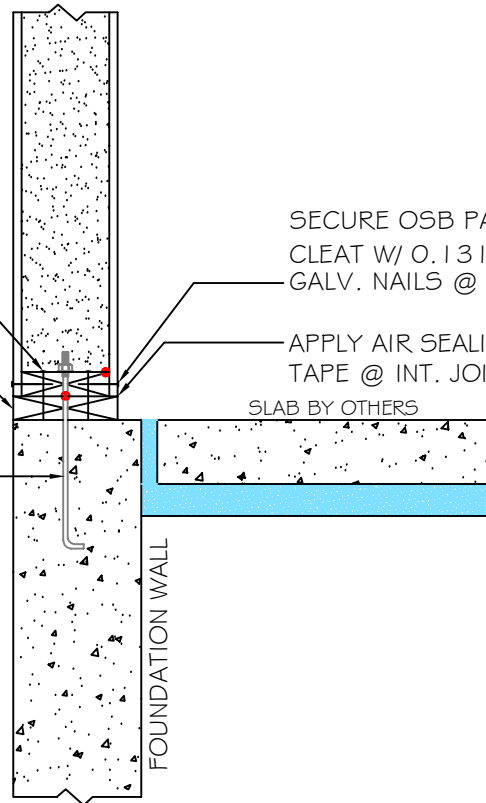
RIPPED P.T. SILL PLATE W/ SILL SEAL BELOW

ANCHOR BOLT EMBEDDED IN CONC. ALLOW ANCHOR BOLT TO STICK ABOVE CONC. WALL 4 1/4" FOR PROPER 2x CLEAT PLATE ATTACHMENT.

SECURE OSB PANEL SKINS TO 2x CLEAT W/ 0.131" DIA. x 2 1/2" LONG GALV. NAILS @ 4" O.C. OR EQU.

APPLY AIR SEALING TAPE @ INT. JOINT

SLAB BY OTHERS

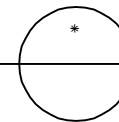


NOTE: ALL RED DOTS - APPLY CONTINUOUS 3/8" DIA. BEAD OF MASTIC SEALANT AT WOOD TO FOAM & WOOD TO WOOD CONNECTIONS AT INTERIOR SIDE.

DETAILS ARE TYPICAL OF STANDARD CONDITIONS AND MAY NOT APPLY TO ALL PROJECTS. REFER TO FINAL PROJECT APPROVAL DRAWINGS FOR SPECIFICATIONS. PLEASE CONTACT FPI TECHNICAL DEPARTMENT FOR QUESTIONS AND/OR CONCERNS.

PANEL SILL CONNECTION DETAIL

SCALE: 1" = 1'-0"



Foard
PANEL

STRUCTURAL INSULATED PANELS
P.O. Box 185, 53 Slow Drive, W. Chesterfield, NH 03466

WWW.FOARDPANEL.COM

(800) - 644 - 8885