

#9

# PANEL TO 1<sup>st</sup> FLOOR DECK CONNECTION

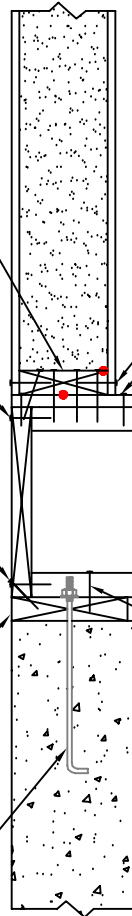
ATTACH SHOE PLATE PRIOR TO INSTALLING PANEL INTO PLACE. NAIL 2x SHOE PLATE THRU SUBFLOOR INTO RIM BOARD W/ 0.131" DIA. x 3/4" LONG GALV. NAILS @ 6" O.C., PLUS (3) 0.131" DIA. x 3/4" LONG GALV. NAILS INTO EA. FLOOR JOIST.

ATTACH RIM BOARD TO EA. JOIST FLANGE W/ (1) 0.131" DIA. x 2 1/2" LONG GALV. NAILS.

TOE NAIL RIM BOARD INTO P.T. SILL PLATE W/ 0.131" DIA. x 2 1/2" LONG GALV. NAILS. @ 6" O.C.

P.T. SILL PLATE

ANCHOR BOLTS BY OTHERS.



SECURE OSB PANEL SKINS TO 2x SHOE PLATE W/ 0.131" DIA. x 2 1/2" LONG GALV. NAILS @ 4" O.C. OR EQU.

APPLY CORNER AIR SEALING TAPE @ INT. JOINT.

3/4" SUBFLOOR DECKING W/ 1/4" BEAD OF SUBFLOOR ADHESIVE, ATTACH DECKING W/ #8 x 2" WOOD SCREWS @ 6" O.C. AROUND THE SUPPORTED PERIMETER & 12" O.C. IN THE FIELD OF EA. SHEET.

DECK SYSTEM

NAIL EA. SIDE OF EA. JOIST W/ 0.131" DIA. x 2 1/2" LONG GALV. NAILS.

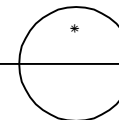
FOUNDATION WALL

NOTE: ALL RED DOTS - APPLY CONTINUOUS 3/8" DIA. BEAD OF MASTIC SEALANT AT WOOD TO FOAM & WOOD TO WOOD CONNECTIONS AT INTERIOR SIDE.

DETAILS ARE TYPICAL OF STANDARD CONDITIONS AND MAY NOT APPLY TO ALL PROJECTS. REFER TO FINAL PROJECT APPROVAL DRAWINGS FOR SPECIFICATIONS. PLEASE CONTACT FPI TECHNICAL DEPARTMENT FOR QUESTIONS AND/OR CONCERNS.

PANEL SILL CONNECTION DETAIL

SCALE: 1" = 1'-0"



**Foard**  
PANEL

STRUCTURAL INSULATED PANELS  
P.O. Box 185, 53 Slow Drive, W. Chesterfield, NH 03466

[WWW.FOARDPANEL.COM](http://WWW.FOARDPANEL.COM)

(800) - 644 - 8885