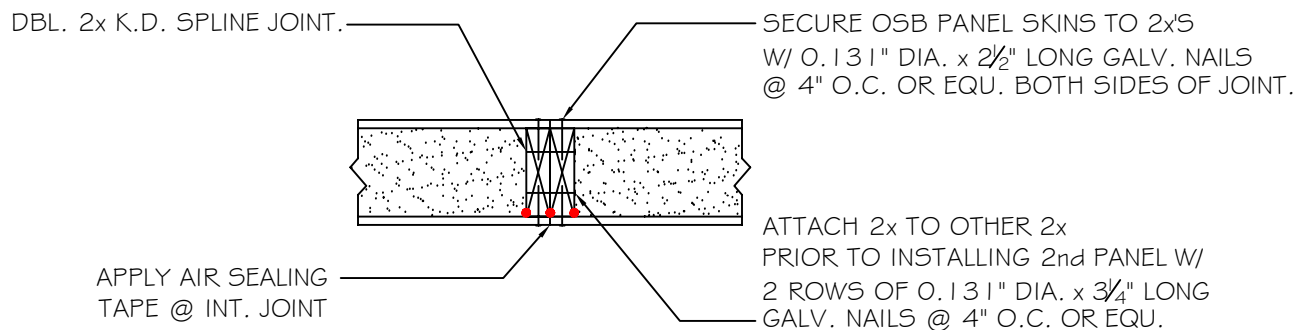


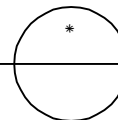
#3

# DOUBLE 2x SPLINE



NOTE: ALL RED DOTS - APPLY CONTINUOUS 3/8" DIA. BEAD OF MASTIC SEALANT AT WOOD TO FOAM & WOOD TO WOOD CONNECTIONS AT INTERIOR SIDE.

DOUBLE 2x PANEL SPLINE CONNECTION DETAIL  
SCALE: 1" = 1'-0"



DETAILS ARE TYPICAL OF STANDARD CONDITIONS AND MAY NOT APPLY TO ALL PROJECTS. REFER TO FINAL PROJECT APPROVAL DRAWINGS FOR SPECIFICATIONS. PLEASE CONTACT FPI TECHNICAL DEPARTMENT FOR QUESTIONS AND/OR CONCERNS.

**Foard**  
PANEL

STRUCTURAL INSULATED PANELS  
P.O. Box 185, 53 Slow Drive, W. Chesterfield, NH 03466

[WWW.FOARDPANEL.COM](http://WWW.FOARDPANEL.COM)

(800) - 644 - 8885