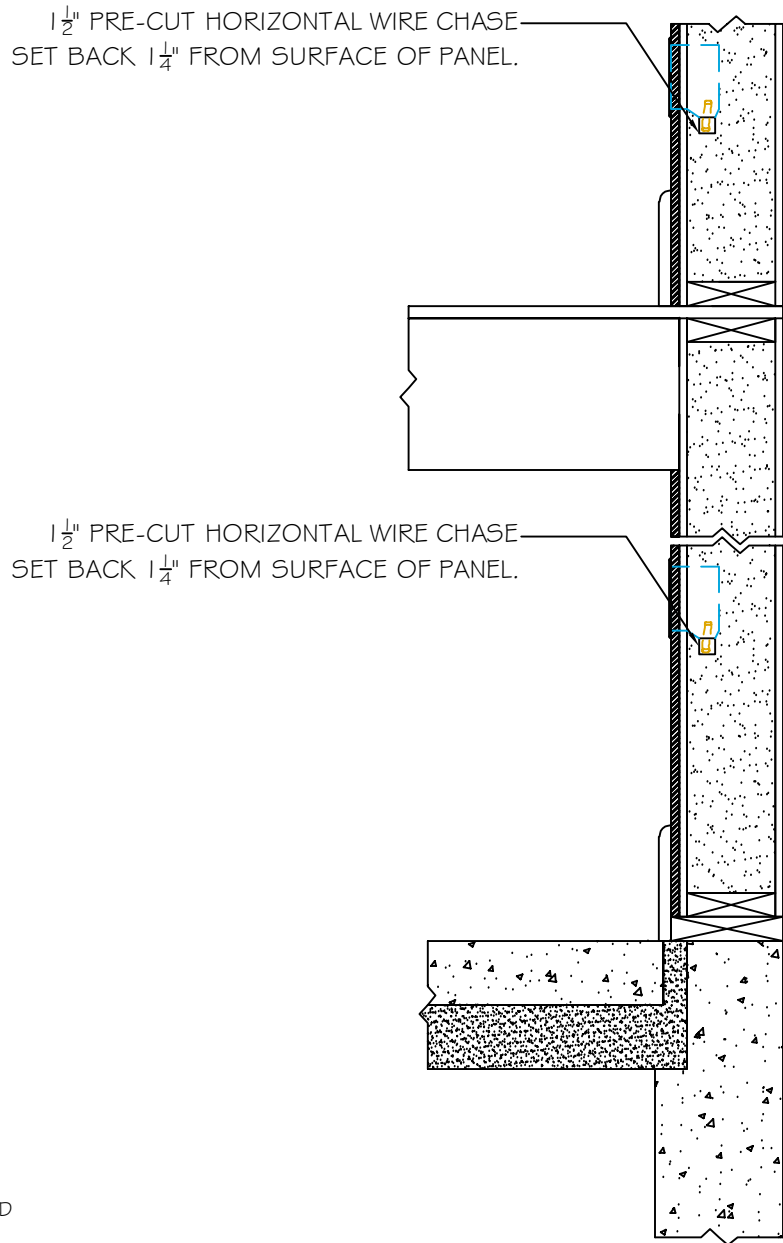


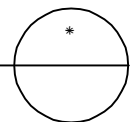
#3 WIRING DETAIL



- PROS:
- * CHANNELS PRE-CUT
 - * MOST DIRECT WIRE PATHS BETWEEN OUTLETS.
- * NOTE:
- WIRING MUST BE COMPLETED BEFORE AIR SEALING NEAR WIRECHASES THAT CROSS PANEL JOINTS.

DETAILS ARE TYPICAL OF STANDARD CONDITIONS AND MAY NOT APPLY TO ALL PROJECTS. REFER TO FINAL PROJECT APPROVAL DRAWINGS FOR SPECIFICATIONS. PLEASE CONTACT FPI TECHNICAL DEPARTMENT FOR QUESTIONS AND/OR CONCERNS.

PRE-CUT HORIZONTAL WIRECHASES
SCALE: 1" = 1'-0"



Foard
PANEL
STRUCTURAL INSULATED PANELS
P.O. Box 185, 53 Slow Drive, W. Chesterfield, NH 03466
WWW.FOARDPANEL.COM
(800) - 644 - 8885