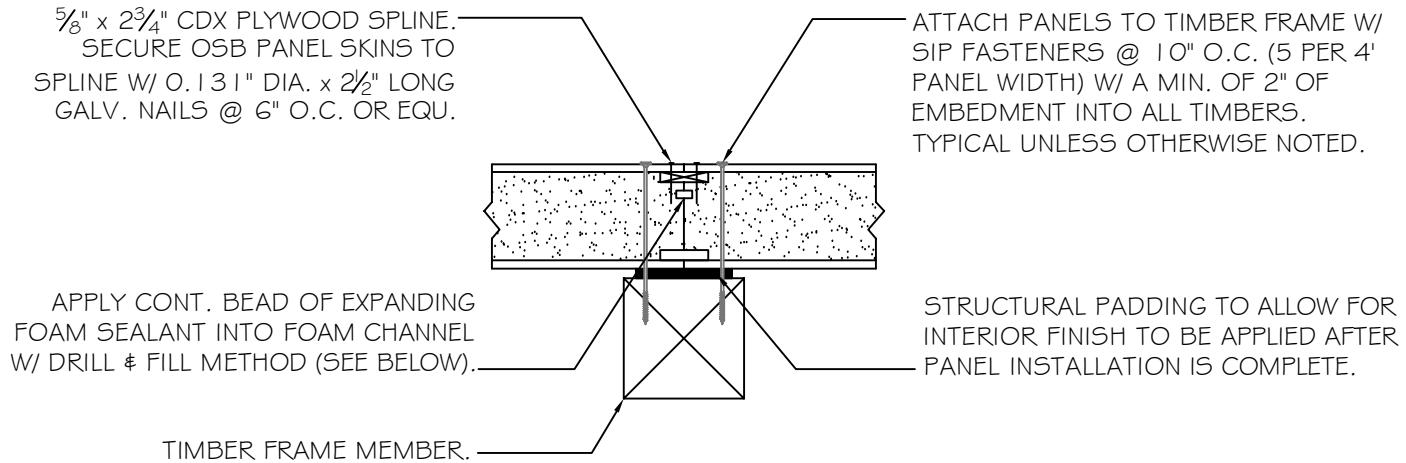


#3

PANEL SPLINE JOINT CONNECTION @ TIMBER



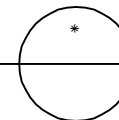
NOTE: IF PANEL IS ALREADY ROUTED FOR DBL. SPLINE CONDITION THAN INTERIOR SPLINE CHANNEL MAY BE USED AS WIRECHASE OR THE GAP SHOULD SIMPLY BE FILLED WITH EXPANDING FOAM SELANT.

DRILL AND FILL METHOD:

FROM EXTERIOR DRILL 3/8" DIA. HOLES IN PANEL CONNECTION @ 10" O.C. FOR WALL PANELS & @ 6" O.C. FOR ROOF PANELS ALONG ENTIRE LENGTH OF JOINT. INJECT FOAM INTO CAVITY FOR APPR. 5 SECONDS. FOAM MUST BE ALLOWED TO CURE FOR AT LEAST 24 HOURS BEFORE HARDENED FOAM BALLS ARE REMOVED FROM THE EXTERIOR. INJECT FOAM AS CLOSE AS POSSIBLE TO INTERIOR SKIN OF PANEL.

PANEL TYPE: STRUCTURAL PANELS APPLIED DIRECTLY TO PADDED FRAME

SINGLE 3" PANEL SPLINE CONNECTION @ TIMBER
SCALE: 1" = 1'-0"



DETAILS ARE TYPICAL OF STANDARD CONDITIONS AND MAY NOT APPLY TO ALL PROJECTS. REFER TO FINAL PROJECT APPROVAL DRAWINGS FOR SPECIFICATIONS. PLEASE CONTACT FPI TECHNICAL DEPARTMENT FOR QUESTIONS AND/OR CONCERNS.

Foard
PANEL

STRUCTURAL INSULATED PANELS
P.O. Box 185, 53 Slow Drive, W. Chesterfield, NH 03466

WWW.FOARDPANEL.COM

(800) - 644 - 8885