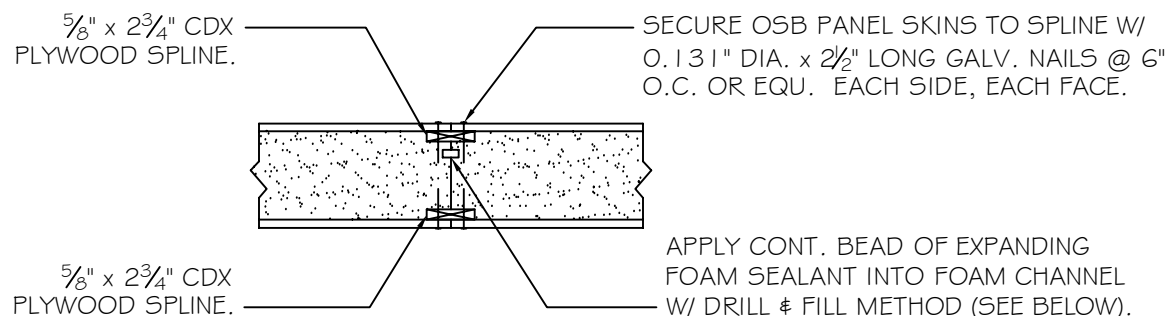


#1

3" WIDE DOUBLE SPLINE

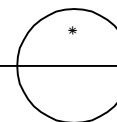


DRILL AND FILL METHOD:

FROM EXTERIOR DRILL 3/8" DIA. HOLES IN PANEL CONNECTION @ 10" O.C. FOR WALL PANELS & @ 6" O.C. FOR ROOF PANELS ALONG ENTIRE LENGTH OF JOINT. INJECT FOAM INTO CAVITY FOR APPR. 5 SECONDS. FOAM MUST BE ALLOWED TO CURE FOR AT LEAST 24 HOURS BEFORE HARDENED FOAM BALLS ARE REMOVED FROM THE EXTERIOR. INJECT FOAM AS CLOSE AS POSSIBLE TO INTERIOR SKIN OF PANEL.

DBL. 3" WIDE PANEL SPLINE CONNECTION

SCALE: 1" = 1'-0"



DETAILS ARE TYPICAL OF STANDARD CONDITIONS AND MAY NOT APPLY TO ALL PROJECTS. REFER TO FINAL PROJECT APPROVAL DRAWINGS FOR SPECIFICATIONS. PLEASE CONTACT FPI TECHNICAL DEPARTMENT FOR QUESTIONS AND/OR CONCERNS.

Foard
PANEL

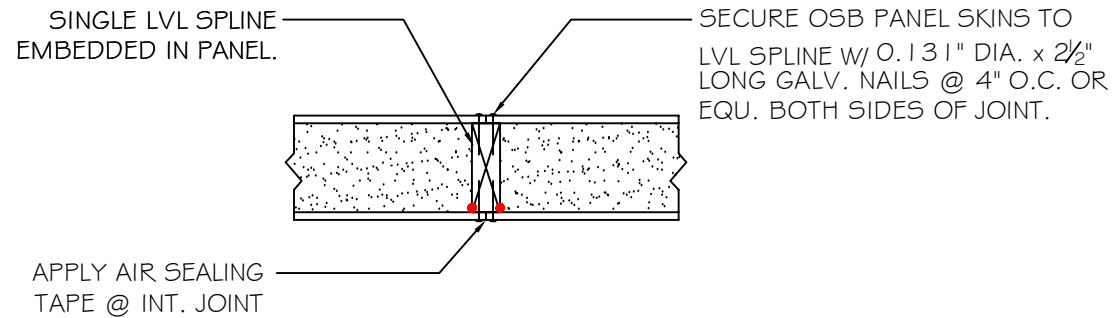
STRUCTURAL INSULATED PANELS
P.O. Box 185, 53 Slow Drive, W. Chesterfield, NH 03466

WWW.FOARDPANEL.COM

(800) - 644 - 8885

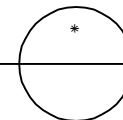
#2

SINGLE LVL SPLINE



NOTE: ALL RED DOTS - APPLY CONTINUOUS 3/8" DIA. BEAD OF MASTIC SEALANT AT WOOD TO FOAM & WOOD TO WOOD CONNECTIONS AT INTERIOR SIDE.

SINGLE LVL PANEL SPLINE CONNECTION DETAIL
SCALE: 1" = 1'-0"



DETAILS ARE TYPICAL OF STANDARD CONDITIONS AND MAY NOT APPLY TO ALL PROJECTS. REFER TO FINAL PROJECT APPROVAL DRAWINGS FOR SPECIFICATIONS. PLEASE CONTACT FPI TECHNICAL DEPARTMENT FOR QUESTIONS AND/OR CONCERNS.

Foard
PANEL

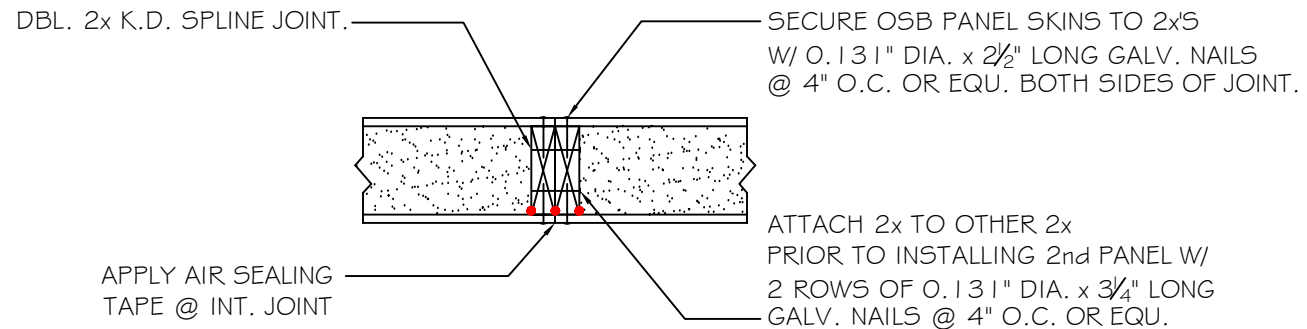
STRUCTURAL INSULATED PANELS
P.O. Box 185, 53 Slow Drive, W. Chesterfield, NH 03466

WWW.FOARDPANEL.COM

(800) - 644 - 8885

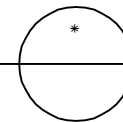
#3

DOUBLE 2x SPLINE



NOTE: ALL RED DOTS - APPLY CONTINUOUS 3/8" DIA. BEAD OF MASTIC SEALANT AT WOOD TO FOAM & WOOD TO WOOD CONNECTIONS AT INTERIOR SIDE.

DOUBLE 2x PANEL SPLINE CONNECTION DETAIL
SCALE: 1" = 1'-0"



DETAILS ARE TYPICAL OF STANDARD CONDITIONS AND MAY NOT APPLY TO ALL PROJECTS. REFER TO FINAL PROJECT APPROVAL DRAWINGS FOR SPECIFICATIONS. PLEASE CONTACT FPI TECHNICAL DEPARTMENT FOR QUESTIONS AND/OR CONCERNS.

Foard
PANEL

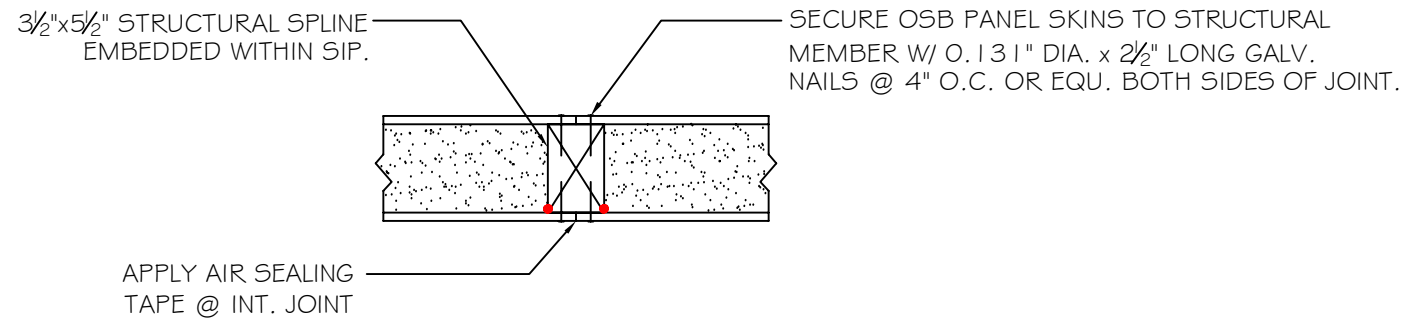
STRUCTURAL INSULATED PANELS
P.O. Box 185, 53 Slow Drive, W. Chesterfield, NH 03466

WWW.FOARDPANEL.COM

(800) - 644 - 8885

#4

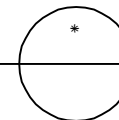
3½" x 5½" SCL SPLINE



NOTE: ALL RED DOTS - APPLY CONTINUOUS 3/8" DIA. BEAD OF MASTIC SEALANT AT WOOD TO FOAM & WOOD TO WOOD CONNECTIONS AT INTERIOR SIDE.

3.5"x5.5" SCL SPLINE CONNECTION DETAIL
SCALE: 1" = 1'-0"

DETAILS ARE TYPICAL OF STANDARD CONDITIONS AND MAY NOT APPLY TO ALL PROJECTS. REFER TO FINAL PROJECT APPROVAL DRAWINGS FOR SPECIFICATIONS. PLEASE CONTACT FPI TECHNICAL DEPARTMENT FOR QUESTIONS AND/OR CONCERNS.



Foard
PANEL

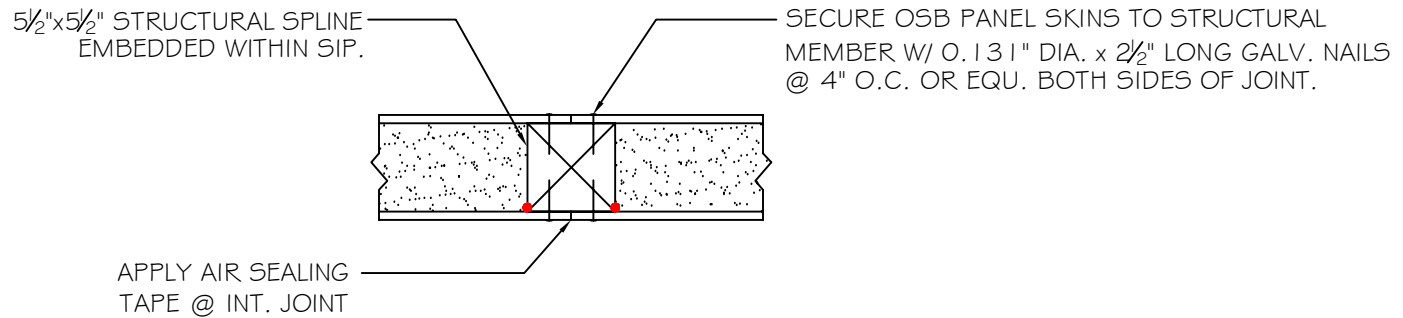
STRUCTURAL INSULATED PANELS
P.O. Box 185, 53 Slow Drive, W. Chesterfield, NH 03466

WWW.FOARDPANEL.COM

(800) - 644 - 8885

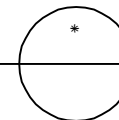
#5

5½" x 5½" SCL SPLINE



NOTE: ALL RED DOTS - APPLY CONTINUOUS ¾" DIA.
BEAD OF MASTIC SEALANT AT WOOD TO FOAM &
WOOD TO WOOD CONNECTIONS AT INTERIOR SIDE.

5.5"x5.5" SCL SPLINE CONNECTION DETAIL
SCALE: 1" = 1'-0"



DETAILS ARE TYPICAL OF
STANDARD CONDITIONS AND
MAY NOT APPLY TO ALL
PROJECTS. REFER TO FINAL
PROJECT APPROVAL DRAWINGS
FOR SPECIFICATIONS. PLEASE
CONTACT FPI TECHNICAL
DEPARTMENT FOR QUESTIONS
AND/OR CONCERNS.

Foard
PANEL

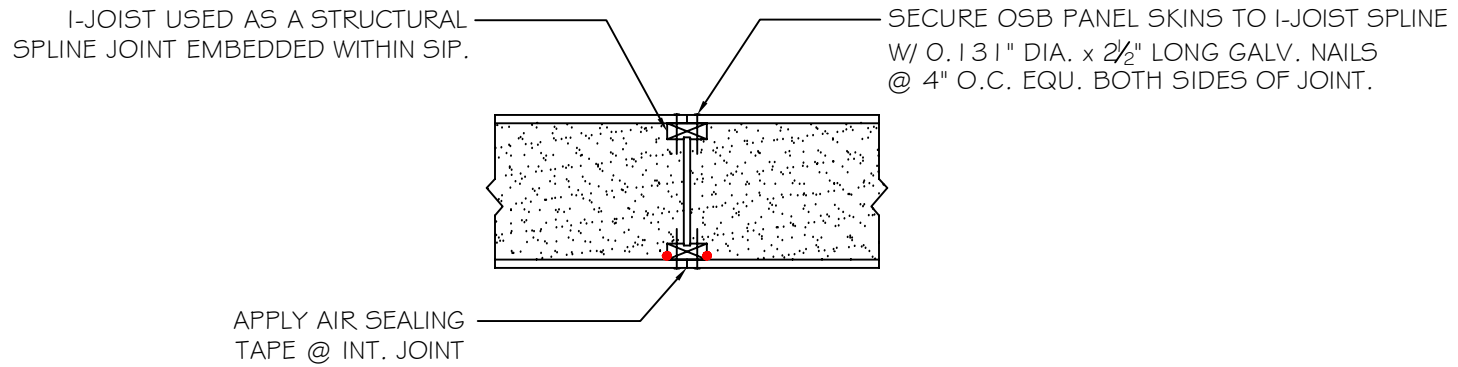
STRUCTURAL INSULATED PANELS
P.O. Box 185, 53 Slow Drive, W. Chesterfield, NH 03466

WWW.FOARDPANEL.COM

(800) - 644 - 8885

#6

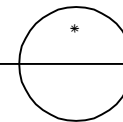
I-JOIST STRUCTURAL SPLINE



NOTE: ALL RED DOTS - APPLY CONTINUOUS 3/8" DIA. BEAD OF MASTIC SEALANT AT WOOD TO FOAM & WOOD TO WOOD CONNECTIONS AT INTERIOR SIDE.

DETAILS ARE TYPICAL OF STANDARD CONDITIONS AND MAY NOT APPLY TO ALL PROJECTS. REFER TO FINAL PROJECT APPROVAL DRAWINGS FOR SPECIFICATIONS. PLEASE CONTACT FPI TECHNICAL DEPARTMENT FOR QUESTIONS AND/OR CONCERNS.

I-JOIST STRUCTURAL SPLINE CONNECTION DETAIL
SCALE: 1" = 1'-0"



Foard
PANEL

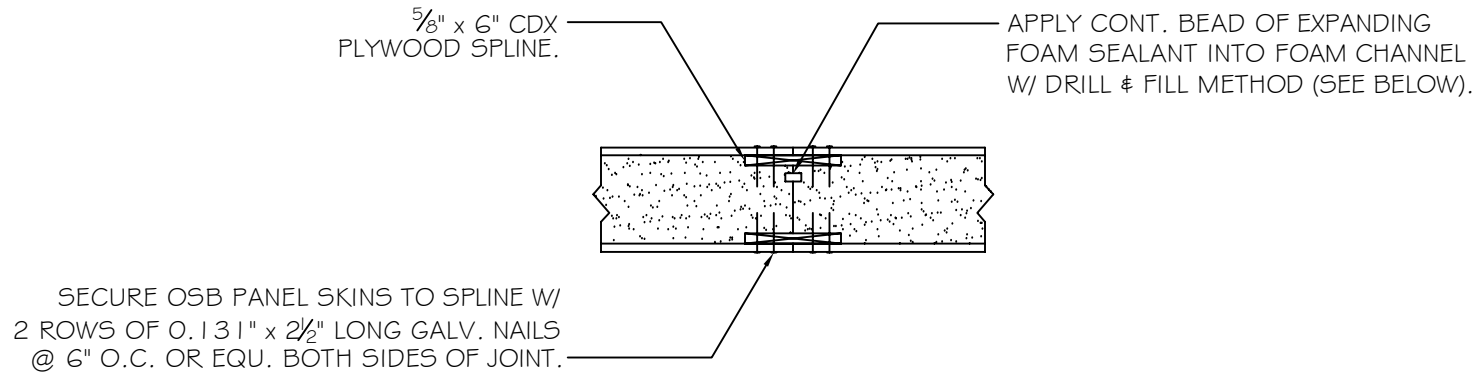
STRUCTURAL INSULATED PANELS
P.O. Box 185, 53 Slow Drive, W. Chesterfield, NH 03466

WWW.FOARDPANEL.COM

(800) - 644 - 8885

#7

6" WIDE DOUBLE SPLINE

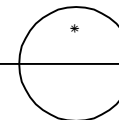


DRILL AND FILL METHOD:

FROM EXTERIOR DRILL 3/8" DIA. HOLES IN PANEL CONNECTION @ 10" O.C. FOR WALL PANELS & @ 6" O.C. FOR ROOF PANELS ALONG ENTIRE LENGTH OF JOINT. INJECT FOAM INTO CAVITY FOR APPR. 5 SECONDS. FOAM MUST BE ALLOWED TO CURE FOR AT LEAST 24 HOURS BEFORE HARDENED FOAM BALLS ARE REMOVED FROM THE EXTERIOR. INJECT FOAM AS CLOSE AS POSSIBLE TO INTERIOR SKIN OF PANEL.

DBL. 6" WIDE PANEL SPLINE CONNECTION

SCALE: 1" = 1'-0"



DETAILS ARE TYPICAL OF STANDARD CONDITIONS AND MAY NOT APPLY TO ALL PROJECTS. REFER TO FINAL PROJECT APPROVAL DRAWINGS FOR SPECIFICATIONS. PLEASE CONTACT FPI TECHNICAL DEPARTMENT FOR QUESTIONS AND/OR CONCERNS.

Foard
PANEL

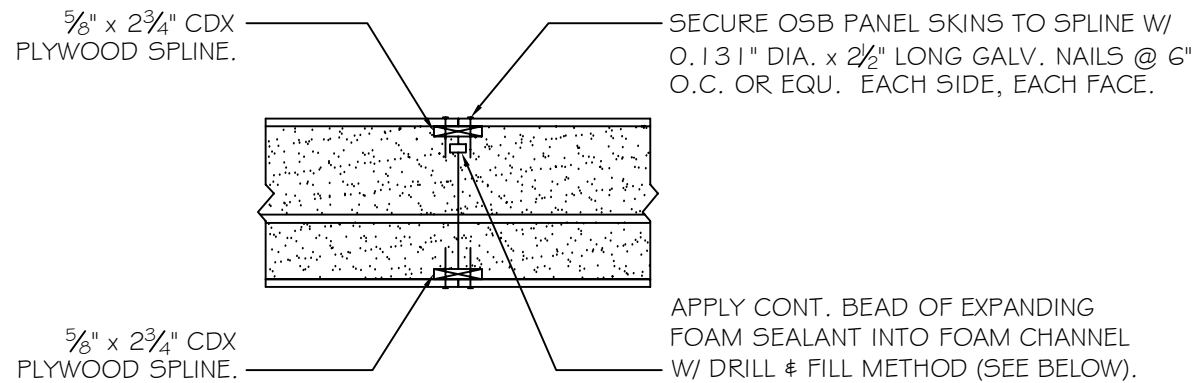
STRUCTURAL INSULATED PANELS
P.O. Box 185, 53 Slow Drive, W. Chesterfield, NH 03466

WWW.FOARDPANEL.COM

(800) - 644 - 8885

#8

3" WIDE DOUBLE SPLINE - PENTA LAM

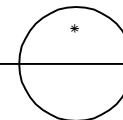


DRILL AND FILL METHOD:

FROM EXTERIOR DRILL 3/8" DIA. HOLES IN PANEL CONNECTION @ 10" O.C. FOR WALL PANELS & @ 6" O.C. FOR ROOF PANELS ALONG ENTIRE LENGTH OF JOINT. INJECT FOAM INTO CAVITY FOR APPR. 5 SECONDS. FOAM MUST BE ALLOWED TO CURE FOR AT LEAST 24 HOURS BEFORE HARDENED FOAM BALLS ARE REMOVED FROM THE EXTERIOR. INJECT FOAM AS CLOSE AS POSSIBLE TO INTERIOR SKIN OF PANEL.

DBL. 6" WIDE PANEL SPLINE CONNECTION

SCALE: 1" = 1'-0"



DETAILS ARE TYPICAL OF STANDARD CONDITIONS AND MAY NOT APPLY TO ALL PROJECTS. REFER TO FINAL PROJECT APPROVAL DRAWINGS FOR SPECIFICATIONS. PLEASE CONTACT FPI TECHNICAL DEPARTMENT FOR QUESTIONS AND/OR CONCERNS.

Foard
PANEL

STRUCTURAL INSULATED PANELS
P.O. Box 185, 53 Slow Drive, W. Chesterfield, NH 03466

WWW.FOARDPANEL.COM

(800) - 644 - 8885

#9

PANEL TO 1st FLOOR DECK CONNECTION

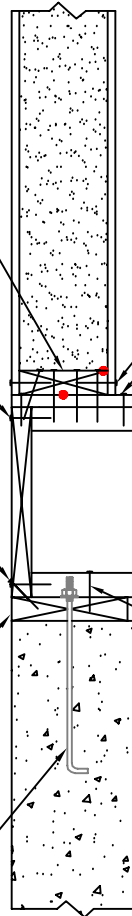
ATTACH SHOE PLATE PRIOR TO INSTALLING PANEL INTO PLACE. NAIL 2x SHOE PLATE THRU SUBFLOOR INTO RIM BOARD W/ 0.131" DIA. x 3/4" LONG GALV. NAILS @ 6" O.C., PLUS (3) 0.131" DIA. x 3/4" LONG GALV. NAILS INTO EA. FLOOR JOIST.

ATTACH RIM BOARD TO EA. JOIST FLANGE W/ (1) 0.131" DIA. x 2 1/2" LONG GALV. NAILS.

TOE NAIL RIM BOARD INTO P.T. SILL PLATE W/ 0.131" DIA. x 2 1/2" LONG GALV. NAILS. @ 6" O.C.

P.T. SILL PLATE

ANCHOR BOLTS BY OTHERS.



SECURE OSB PANEL SKINS TO 2x SHOE PLATE W/ 0.131" DIA. x 2 1/2" LONG GALV. NAILS @ 4" O.C. OR EQU.

APPLY CORNER AIR SEALING TAPE @ INT. JOINT.

3/4" SUBFLOOR DECKING W/ 1/4" BEAD OF SUBFLOOR ADHESIVE, ATTACH DECKING W/ #8 x 2" WOOD SCREWS @ 6" O.C. AROUND THE SUPPORTED PERIMETER & 12" O.C. IN THE FIELD OF EA. SHEET.

DECK SYSTEM

NAIL EA. SIDE OF EA. JOIST W/ 0.131" DIA. x 2 1/2" LONG GALV. NAILS.

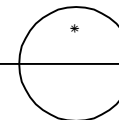
FOUNDATION WALL

NOTE: ALL RED DOTS - APPLY CONTINUOUS 3/8" DIA. BEAD OF MASTIC SEALANT AT WOOD TO FOAM & WOOD TO WOOD CONNECTIONS AT INTERIOR SIDE.

DETAILS ARE TYPICAL OF STANDARD CONDITIONS AND MAY NOT APPLY TO ALL PROJECTS. REFER TO FINAL PROJECT APPROVAL DRAWINGS FOR SPECIFICATIONS. PLEASE CONTACT FPI TECHNICAL DEPARTMENT FOR QUESTIONS AND/OR CONCERNS.

PANEL SILL CONNECTION DETAIL

SCALE: 1" = 1'-0"



Foard
PANEL

STRUCTURAL INSULATED PANELS
P.O. Box 185, 53 Slow Drive, W. Chesterfield, NH 03466

WWW.FOARDPANEL.COM

(800) - 644 - 8885

#10

PANEL TO 1st FLOOR DECK CONNECTION

ATTACH SHOE PLATE PRIOR TO INSTALLING PANEL INTO PLACE. NAIL 2x SHOE PLATE THRU SUBFLOOR INTO RIM BOARD W/ 0.131" DIA. x 3/4" LONG GALV. NAILS @ 6" O.C., PLUS (3) 0.131" DIA. x 3/4" LONG GALV. NAILS INTO EA. JOIST BRACE OR 2 ROWS @ 6" O.C. EA. ROW INTO SUBFLOOR ALONE.

SECURE OSB PANEL SKINS TO 2x SHOE PLATE W/ 0.131" DIA. x 2 1/2" LONG GALV. NAILS @ 4" O.C. OR EQU.

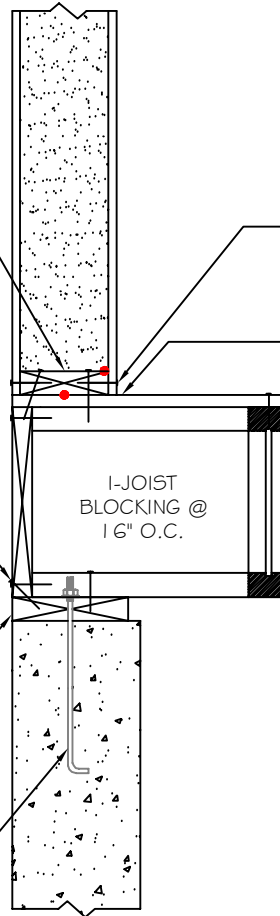
APPLY CORNER AIR SEALING TAPE @ INT. JOINT.

TOE NAIL RIM BOARD INTO P.T. SILL PLATE W/ 0.131" DIA. x 2 1/2" LONG GALV. NAILS. @ 6" O.C.

3/4" SUBFLOOR DECKING W/ 1/4" BEAD OF SUBFLOOR ADHESIVE, ATTACH DECKING W/ #8 x 2" WOOD SCREWS @ 6" O.C. AROUND THE SUPPORTED PERIMETER & 12" O.C. IN THE FIELD OF EA. SHEET.

P.T. SILL PLATE

ANCHOR BOLTS BY OTHERS.

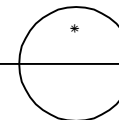


NOTE: ALL RED DOTS - APPLY CONTINUOUS 3/8" DIA. BEAD OF MASTIC SEALANT AT WOOD TO FOAM & WOOD TO WOOD CONNECTIONS AT INTERIOR SIDE.

DETAILS ARE TYPICAL OF STANDARD CONDITIONS AND MAY NOT APPLY TO ALL PROJECTS. REFER TO FINAL PROJECT APPROVAL DRAWINGS FOR SPECIFICATIONS. PLEASE CONTACT FPI TECHNICAL DEPARTMENT FOR QUESTIONS AND/OR CONCERNS.

PANEL SILL CONNECTION DETAIL

SCALE: 1" = 1'-0"



Foard
PANEL

STRUCTURAL INSULATED PANELS
P.O. Box 185, 53 Slow Drive, W. Chesterfield, NH 03466

WWW.FOARDPANEL.COM

(800) - 644 - 8885

1 1

PANEL TO 1st FLOOR DECK W/ RIM PANEL

ATTACH CLEAT PRIOR TO INSTALLING PANEL INTO PLACE. ATTACH 2x CLEAT PLATE THRU SUBFLOOR INTO RIM PANEL & FLOOR JOIST W/ 2 ROWS OF 0.131" DIA. x 3/4" LONG GALV. NAILS @ 4" O.C. OR EQU.

SECURE OSB PANEL SKINS TO 2x SHOE PLATE W/ 0.131" DIA. x 2 1/2" LONG GALV. NAILS @ 4" O.C. OR EQU.

APPLY CORNER AIR SEALING TAPE @ INT. JOINT.

4 1/2" SIP RIM PANEL

3/4" SUBFLOOR DECKING W/ 1/4" BEAD OF SUBFLOOR ADHESIVE, ATTACH DECKING W/ #8 x 2" WOOD SCREWS @ 6" O.C. AROUND THE SUPPORTED PERIMETER & 12" O.C. IN THE FIELD OF EA. SHEET.

ATTACH CLEAT PRIOR TO INSTALLING RIM PANEL. ATTACH 2x CLEAT PLATE TO P.T. SILL PLATE W/ 2 ROWS OF 0.131" DIA. x 3/4" LONG GALV. NAILS @ 4" O.C. OR EQU.

DECK SYSTEM

P.T. SILL PLATE

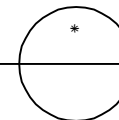
ANCHOR BOLTS BY OTHERS.

FOUNDATION WALL

NOTE: ALL RED DOTS - APPLY CONTINUOUS 3/8" DIA. BEAD OF MASTIC SEALANT AT WOOD TO FOAM & WOOD TO WOOD CONNECTIONS AT INTERIOR SIDE.

PANEL SILL CONNECTION DETAIL

SCALE: 1" = 1'-0"



DETAILS ARE TYPICAL OF STANDARD CONDITIONS AND MAY NOT APPLY TO ALL PROJECTS. REFER TO FINAL PROJECT APPROVAL DRAWINGS FOR SPECIFICATIONS. PLEASE CONTACT FPI TECHNICAL DEPARTMENT FOR QUESTIONS AND/OR CONCERNS.

Foard PANEL

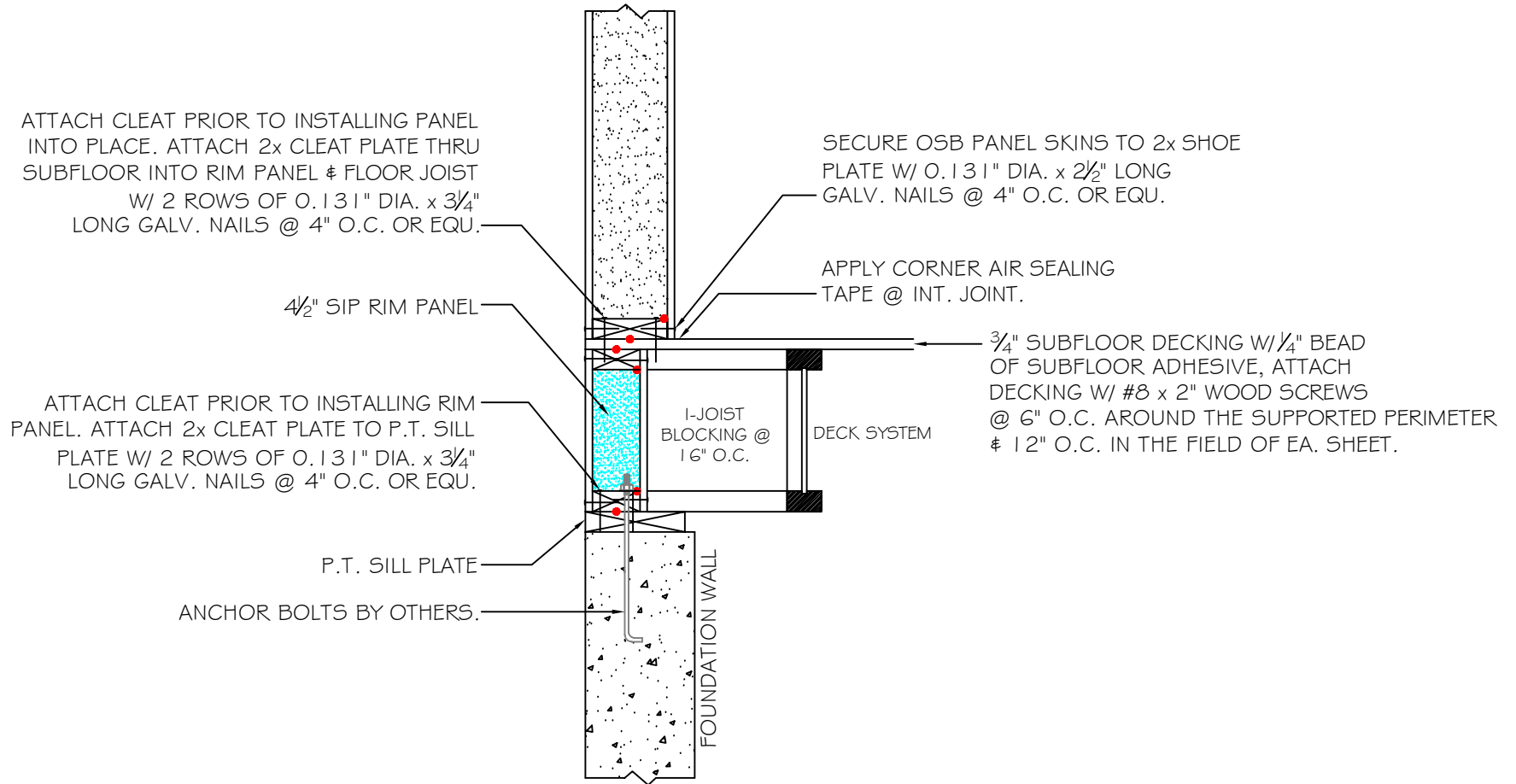
STRUCTURAL INSULATED PANELS
P.O. Box 185, 53 Slow Drive, W. Chesterfield, NH 03466

WWW.FOARDPANEL.COM

(800) - 644 - 8885

#12

PANEL TO 1st FLOOR DECK W/ RIM PANEL

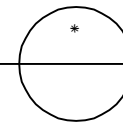


NOTE: ALL RED DOTS - APPLY CONTINUOUS 3/8" DIA. BEAD OF MASTIC SEALANT AT WOOD TO FOAM & WOOD TO WOOD CONNECTIONS AT INTERIOR SIDE.

DETAILS ARE TYPICAL OF STANDARD CONDITIONS AND MAY NOT APPLY TO ALL PROJECTS. REFER TO FINAL PROJECT APPROVAL DRAWINGS FOR SPECIFICATIONS. PLEASE CONTACT FPI TECHNICAL DEPARTMENT FOR QUESTIONS AND/OR CONCERNS.

PANEL SILL CONNECTION DETAIL

SCALE: 1" = 1'-0"



Foard
PANEL

STRUCTURAL INSULATED PANELS
P.O. Box 185, 53 Slow Drive, W. Chesterfield, NH 03466

WWW.FOARDPANEL.COM

(800) - 644 - 8885

#13

PANEL TO 1st FLOOR DECK ABOVE ICF

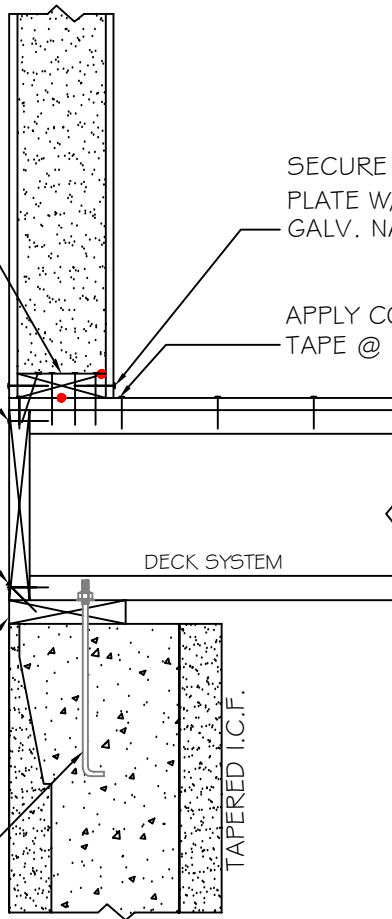
ATTACH SHOE PLATE PRIOR TO INSTALLING PANEL INTO PLACE. NAIL 2x SHOE PLATE THRU SUBFLOOR INTO RIM BOARD W/ 0.131" DIA. x 3/4" LONG GALV. NAILS @ 6" O.C., PLUS (3) 0.131" DIA. x 3/4" LONG GALV. NAILS INTO EA. FLOOR JOIST.

ATTACH RIM BOARD TO EA. JOIST FLANGE W/ (1) 0.131" DIA. x 2 1/2" LONG GALV. NAILS.

TOE NAIL RIM BOARD INTO P.T. SILL PLATE W/ 0.131" DIA. x 2 1/2" LONG GALV. NAILS. @ 6" O.C.

P.T. SILL PLATE

ANCHOR BOLTS BY OTHERS.



SECURE OSB PANEL SKINS TO 2x SHOE PLATE W/ 0.131" DIA. x 2 1/2" LONG GALV. NAILS @ 4" O.C. OR EQU.

APPLY CORNER AIR SEALING TAPE @ INT. JOINT.

3/4" SUBFLOOR DECKING W/ 1/4" BEAD OF SUBFLOOR ADHESIVE, ATTACH DECKING W/ #8 x 2" WOOD SCREWS @ 6" O.C. AROUND THE SUPPORTED PERIMETER & 12" O.C. IN THE FIELD OF EA. SHEET.

DECK SYSTEM

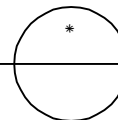
TAPERED I.C.F.

NOTE: ALL RED DOTS - APPLY CONTINUOUS 3/8" DIA. BEAD OF MASTIC SEALANT AT WOOD TO FOAM & WOOD TO WOOD CONNECTIONS AT INTERIOR SIDE.

DETAILS ARE TYPICAL OF STANDARD CONDITIONS AND MAY NOT APPLY TO ALL PROJECTS. REFER TO FINAL PROJECT APPROVAL DRAWINGS FOR SPECIFICATIONS. PLEASE CONTACT FPI TECHNICAL DEPARTMENT FOR QUESTIONS AND/OR CONCERNS.

PANEL SILL CONNECTION DETAIL

SCALE: 1" = 1'-0"



Foard
PANEL

STRUCTURAL INSULATED PANELS
P.O. Box 185, 53 Slow Drive, W. Chesterfield, NH 03466

WWW.FOARDPANEL.COM

(800) - 644 - 8885

#14

PANEL TO STEM WALL CONNECTION

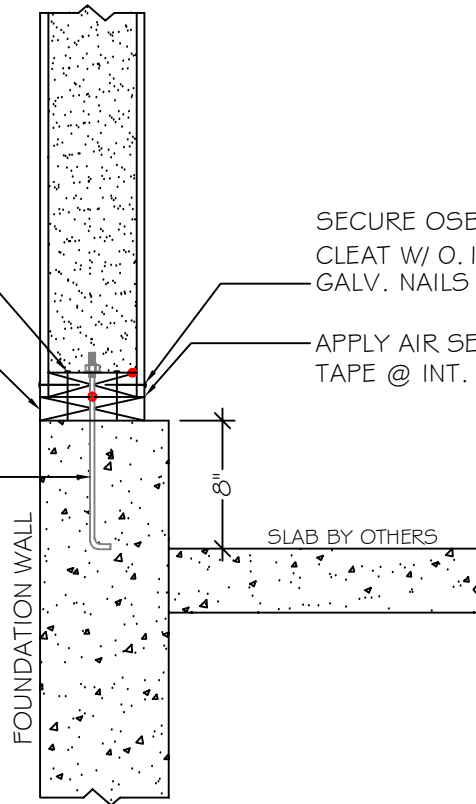
ATTACH CLEAT PRIOR TO INSTALLING PANEL INTO PLACE. ATTACH 2x CLEAT PLATE TO DECK W/ 2 ROWS OF 0.131" DIA. x 3/4" LONG GALV. NAILS @ 4" O.C. OR EQU.

RIPPED P.T. SILL PLATE W/ SILL SEAL BELOW

ANCHOR BOLT EMBEDDED IN CONC. ALLOW ANCHOR BOLT TO STICK ABOVE CONC. WALL 4 1/4" FOR PROPER 2x CLEAT PLATE ATTACHMENT.

SECURE OSB PANEL SKINS TO 2x CLEAT W/ 0.131" DIA. x 2 1/2" LONG GALV. NAILS @ 4" O.C. OR EQU.

APPLY AIR SEALING TAPE @ INT. JOINT.

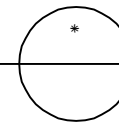


NOTE: ALL RED DOTS - APPLY CONTINUOUS 3/8" DIA. BEAD OF MASTIC SEALANT AT WOOD TO FOAM & WOOD TO WOOD CONNECTIONS AT INTERIOR SIDE.

DETAILS ARE TYPICAL OF STANDARD CONDITIONS AND MAY NOT APPLY TO ALL PROJECTS. REFER TO FINAL PROJECT APPROVAL DRAWINGS FOR SPECIFICATIONS. PLEASE CONTACT FPI TECHNICAL DEPARTMENT FOR QUESTIONS AND/OR CONCERNS.

PANEL SILL CONNECTION DETAIL

SCALE: 1" = 1'-0"



Foard
PANEL

STRUCTURAL INSULATED PANELS
P.O. Box 185, 53 Slow Drive, W. Chesterfield, NH 03466

WWW.FOARDPANEL.COM

(800) - 644 - 8885

#15

PANEL TO STEM WALL CONNECTION

ATTACH CLEAT PRIOR TO INSTALLING PANEL INTO PLACE. ATTACH 2x CLEAT PLATE TO DECK W/ 2 ROWS OF 0.131" DIA. x 3/4" LONG GALV. NAILS @ 4" O.C. OR EQU.

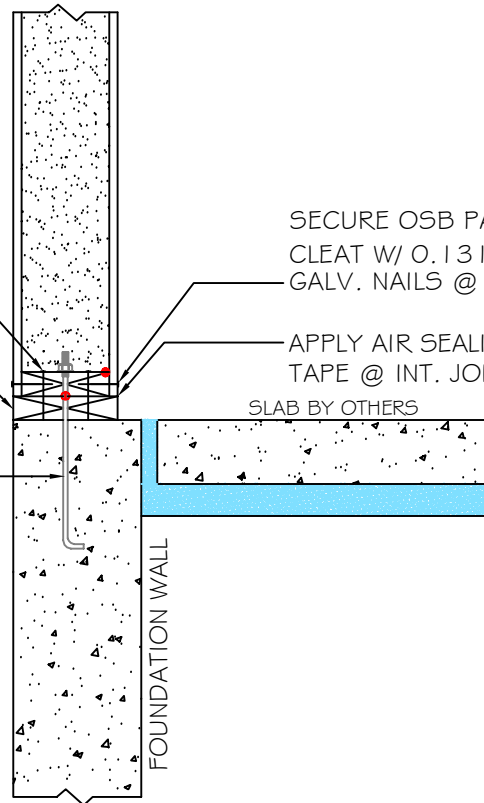
RIPPED P.T. SILL PLATE W/ SILL SEAL BELOW

ANCHOR BOLT EMBEDDED IN CONC. ALLOW ANCHOR BOLT TO STICK ABOVE CONC. WALL 4 1/4" FOR PROPER 2x CLEAT PLATE ATTACHMENT.

SECURE OSB PANEL SKINS TO 2x CLEAT W/ 0.131" DIA. x 2 1/2" LONG GALV. NAILS @ 4" O.C. OR EQU.

APPLY AIR SEALING TAPE @ INT. JOINT

SLAB BY OTHERS

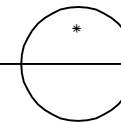


NOTE: ALL RED DOTS - APPLY CONTINUOUS 3/8" DIA. BEAD OF MASTIC SEALANT AT WOOD TO FOAM & WOOD TO WOOD CONNECTIONS AT INTERIOR SIDE.

PANEL SILL CONNECTION DETAIL

SCALE: 1" = 1'-0"

DETAILS ARE TYPICAL OF STANDARD CONDITIONS AND MAY NOT APPLY TO ALL PROJECTS. REFER TO FINAL PROJECT APPROVAL DRAWINGS FOR SPECIFICATIONS. PLEASE CONTACT FPI TECHNICAL DEPARTMENT FOR QUESTIONS AND/OR CONCERNS.



Foard
PANEL

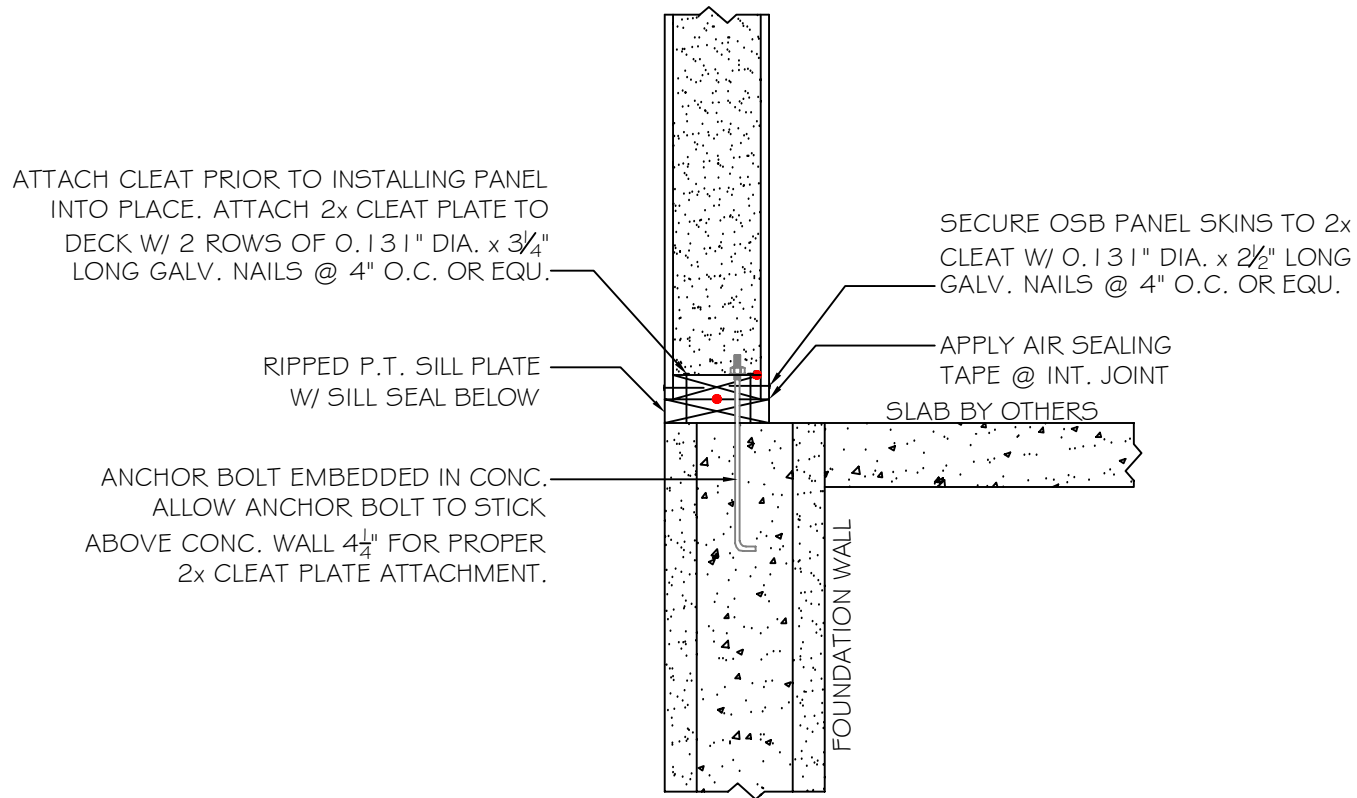
STRUCTURAL INSULATED PANELS
P.O. Box 185, 53 Slow Drive, W. Chesterfield, NH 03466

WWW.FOARDPANEL.COM

(800) - 644 - 8885

#16

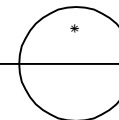
PANEL TO ICF STEM WALL CONNECTION



NOTE: ALL RED DOTS - APPLY CONTINUOUS 3/8" DIA. BEAD OF MASTIC SEALANT AT WOOD TO FOAM & WOOD TO WOOD CONNECTIONS AT INTERIOR SIDE.

DETAILS ARE TYPICAL OF STANDARD CONDITIONS AND MAY NOT APPLY TO ALL PROJECTS. REFER TO FINAL PROJECT APPROVAL DRAWINGS FOR SPECIFICATIONS. PLEASE CONTACT FPI TECHNICAL DEPARTMENT FOR QUESTIONS AND/OR CONCERNS.

PANEL SILL CONNECTION DETAIL
SCALE: 1" = 1'-0"



Foard
PANEL

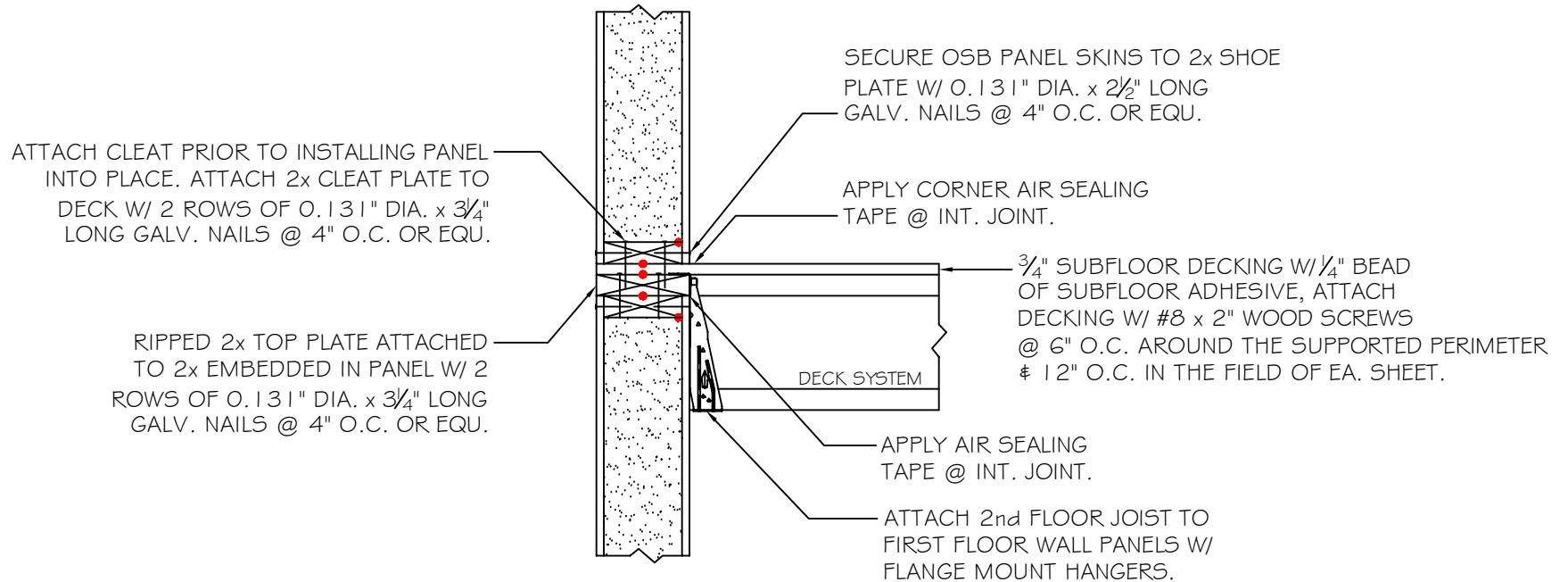
STRUCTURAL INSULATED PANELS
P.O. Box 185, 53 Slow Drive, W. Chesterfield, NH 03466

WWW.FOARDPANEL.COM

(800) - 644 - 8885

#17

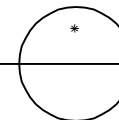
PANEL TO 2nd FLOOR DECK CONNECTION



NOTE: ALL RED DOTS - APPLY CONTINUOUS 3/8" DIA. BEAD OF MASTIC SEALANT AT WOOD TO FOAM & WOOD TO WOOD CONNECTIONS AT INTERIOR SIDE.

2nd FLOOR DECK ATTACHMENT DETAIL

SCALE: 1" = 1'-0"



DETAILS ARE TYPICAL OF STANDARD CONDITIONS AND MAY NOT APPLY TO ALL PROJECTS. REFER TO FINAL PROJECT APPROVAL DRAWINGS FOR SPECIFICATIONS. PLEASE CONTACT FPI TECHNICAL DEPARTMENT FOR QUESTIONS AND/OR CONCERNS.

Foard
PANEL

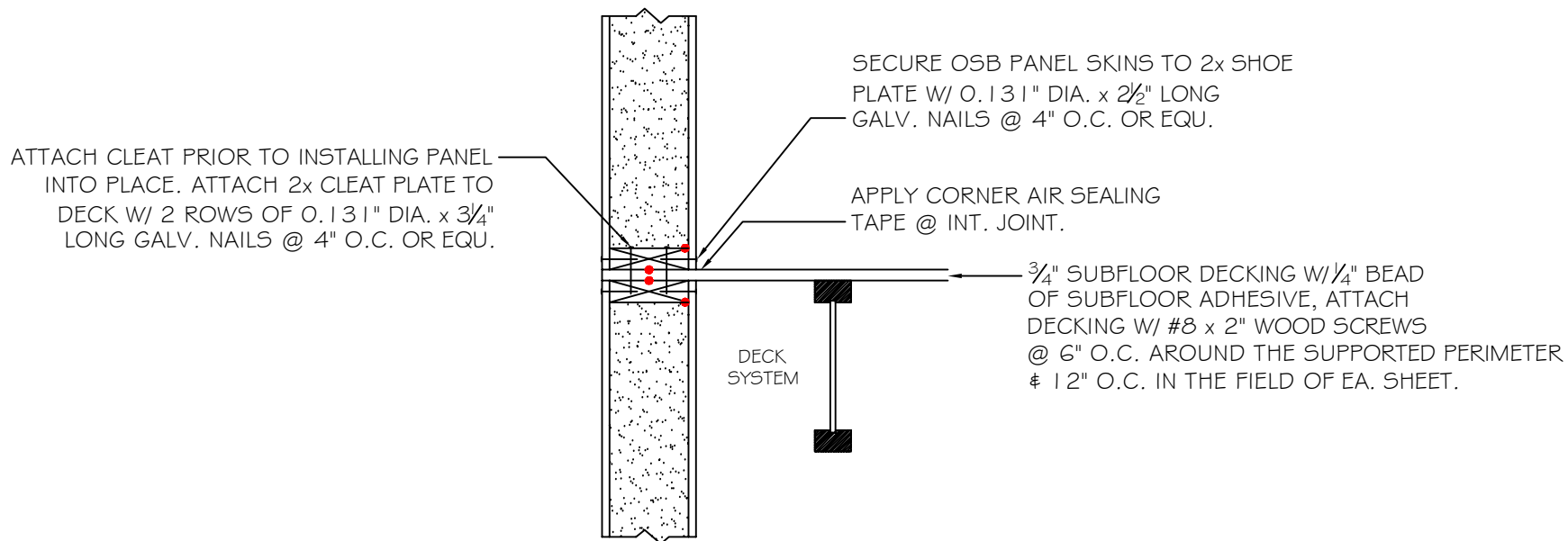
STRUCTURAL INSULATED PANELS
P.O. Box 185, 53 Slow Drive, W. Chesterfield, NH 03466

WWW.FOARDPANEL.COM

(800) - 644 - 8885

#18

PANEL TO 2nd FLOOR DECK CONNECTION

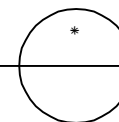


NOTE: ALL RED DOTS - APPLY CONTINUOUS 3/8" DIA. BEAD OF MASTIC SEALANT AT WOOD TO FOAM & WOOD TO WOOD CONNECTIONS AT INTERIOR SIDE.

DETAILS ARE TYPICAL OF STANDARD CONDITIONS AND MAY NOT APPLY TO ALL PROJECTS. REFER TO FINAL PROJECT APPROVAL DRAWINGS FOR SPECIFICATIONS. PLEASE CONTACT FPI TECHNICAL DEPARTMENT FOR QUESTIONS AND/OR CONCERNS.

2nd FLOOR DECK ATTACHMENT DETAIL

SCALE: 1" = 1'-0"



Foard
PANEL

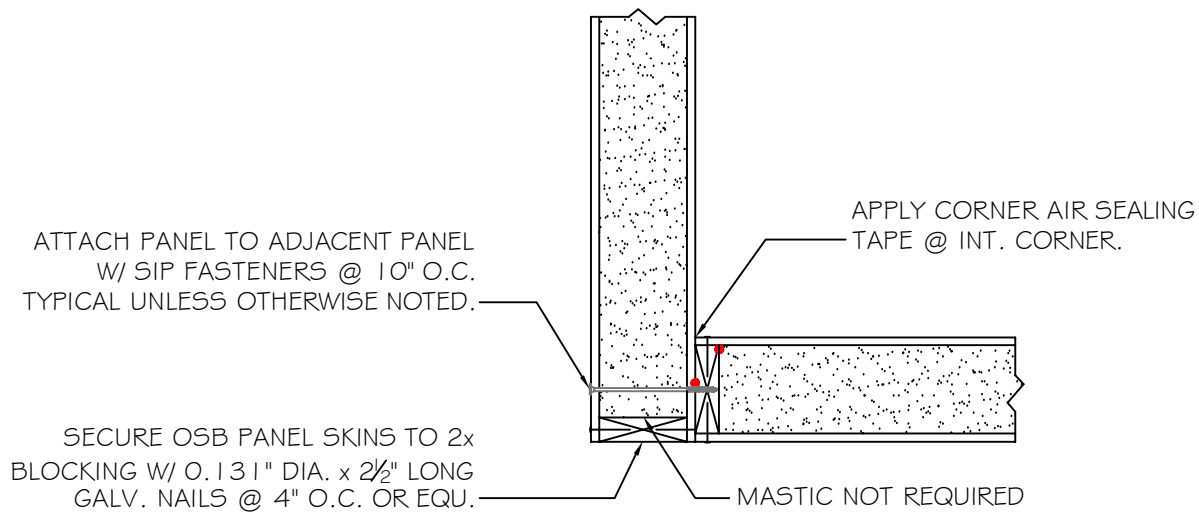
STRUCTURAL INSULATED PANELS
P.O. Box 185, 53 Slow Drive, W. Chesterfield, NH 03466

WWW.FOARDPANEL.COM

(800) - 644 - 8885

#19

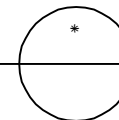
STRUCTURAL CORNER CONNECTION



NOTE: ALL RED DOTS - APPLY CONTINUOUS 3/8" DIA.
BEAD OF MASTIC SEALANT AT WOOD TO FOAM &
WOOD TO WOOD CONNECTIONS AT INTERIOR SIDE.

STRUCTURAL CORNER CONNECTION DETAIL

SCALE: 1" = 1'-0"



DETAILS ARE TYPICAL OF
STANDARD CONDITIONS AND
MAY NOT APPLY TO ALL
PROJECTS. REFER TO FINAL
PROJECT APPROVAL DRAWINGS
FOR SPECIFICATIONS. PLEASE
CONTACT FPI TECHNICAL
DEPARTMENT FOR QUESTIONS
AND/OR CONCERNS.

Foard
PANEL

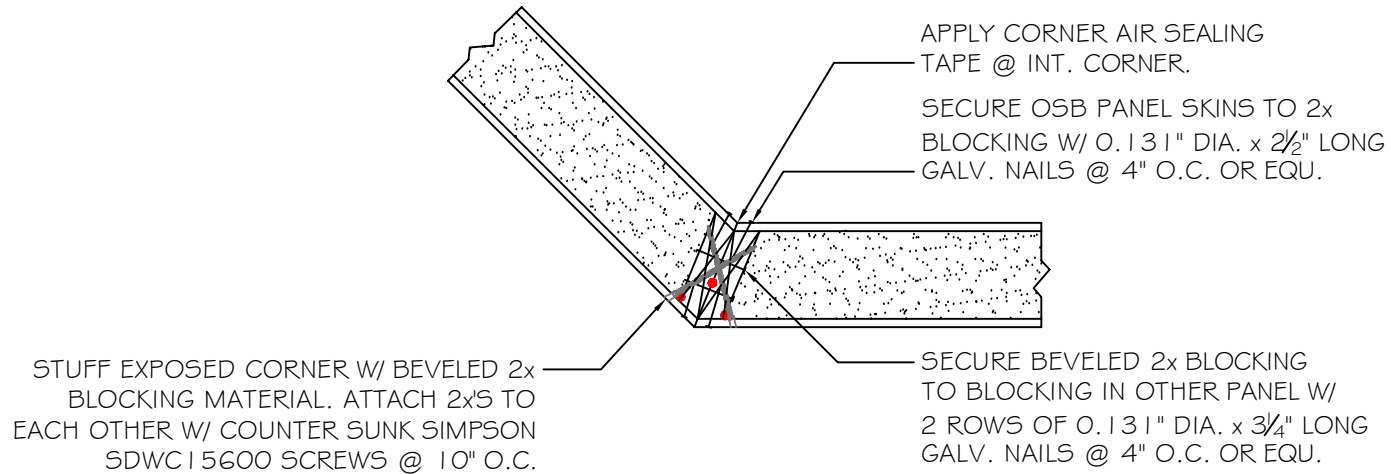
STRUCTURAL INSULATED PANELS
P.O. Box 185, 53 Slow Drive, W. Chesterfield, NH 03466

WWW.FOARDPANEL.COM

(800) - 644 - 8885

#20

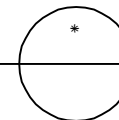
BEVELED STRUCTURAL CORNER CONNECTION



NOTE: ALL RED DOTS - APPLY CONTINUOUS ¾" DIA. BEAD OF MASTIC SEALANT AT WOOD TO FOAM & WOOD TO WOOD CONNECTIONS AT INTERIOR SIDE.

DETAILS ARE TYPICAL OF STANDARD CONDITIONS AND MAY NOT APPLY TO ALL PROJECTS. REFER TO FINAL PROJECT APPROVAL DRAWINGS FOR SPECIFICATIONS. PLEASE CONTACT FPI TECHNICAL DEPARTMENT FOR QUESTIONS AND/OR CONCERNS.

BEVELED STRUCTURAL CORNER CONNECTION DETAIL
SCALE: 1" = 1'-0"



Foard
PANEL

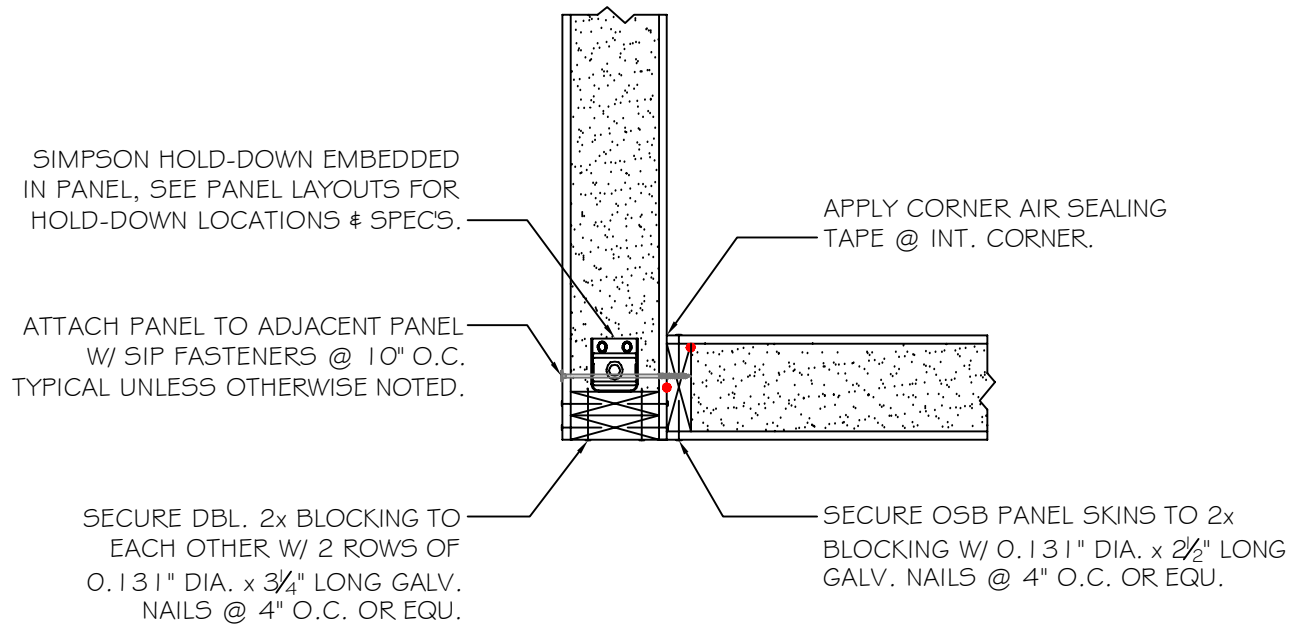
STRUCTURAL INSULATED PANELS
P.O. Box 185, 53 Slow Drive, W. Chesterfield, NH 03466

WWW.FOARDPANEL.COM

(800) - 644 - 8885

#21

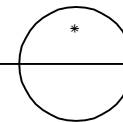
STRUCTURAL CORNER W/ HOLD-DOWN



NOTE: ALL RED DOTS - APPLY CONTINUOUS 3/8" DIA. BEAD OF MASTIC SEALANT AT WOOD TO FOAM & WOOD TO WOOD CONNECTIONS AT INTERIOR SIDE.

DETAILS ARE TYPICAL OF STANDARD CONDITIONS AND MAY NOT APPLY TO ALL PROJECTS. REFER TO FINAL PROJECT APPROVAL DRAWINGS FOR SPECIFICATIONS. PLEASE CONTACT FPI TECHNICAL DEPARTMENT FOR QUESTIONS AND/OR CONCERNS.

STRUCTURAL CORNER CONNECTION W/ HOLD-DOWN
SCALE: 1" = 1'-0"



Foard
PANEL

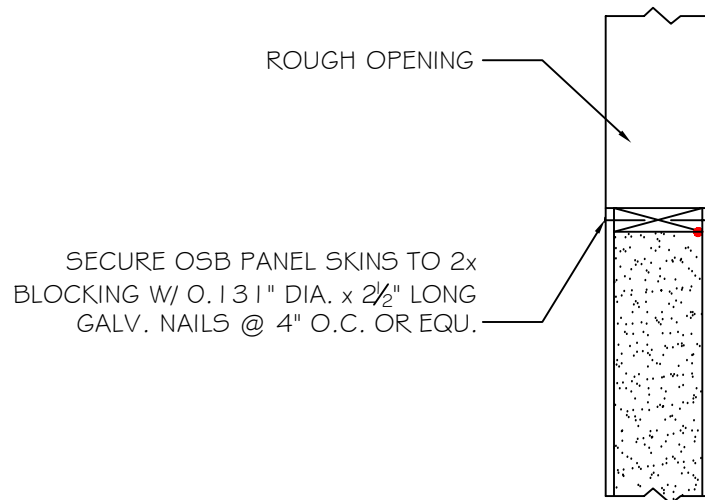
STRUCTURAL INSULATED PANELS
P.O. Box 185, 53 Slow Drive, W. Chesterfield, NH 03466

WWW.FOARDPANEL.COM

(800) - 644 - 8885

#22

ROUGH OPENING EDGE DETAIL



HEADER & SILL BLOCKING TO RUN BY VERTICAL JACKS

ALL ROUGH OPENING BLOCKING MUST BE RUN CONT.

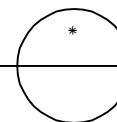
LEAVE DOOR JACKS TEMPORARLY UNFASTENED SO THAT
ELECTRICAL WIRES CAN BE RUN BETWEEN JACK & PANEL FOAM

NOTE: ALL RED DOTS - APPLY CONTINUOUS 3/8" DIA.
BEAD OF MASTIC SEALANT AT WOOD & FOAM &
WOOD TO WOOD CONNECTIONS AT INTERIOR SIDE.

DETAILS ARE TYPICAL OF
STANDARD CONDITIONS AND
MAY NOT APPLY TO ALL
PROJECTS. REFER TO FINAL
PROJECT APPROVAL DRAWINGS
FOR SPECIFICATIONS. PLEASE
CONTACT FPI TECHNICAL
DEPARTMENT FOR QUESTIONS
AND/OR CONCERNS.

PANEL ROUGH OPENING EDGE DETAIL

SCALE: 1" = 1'-0"



Foard
PANEL

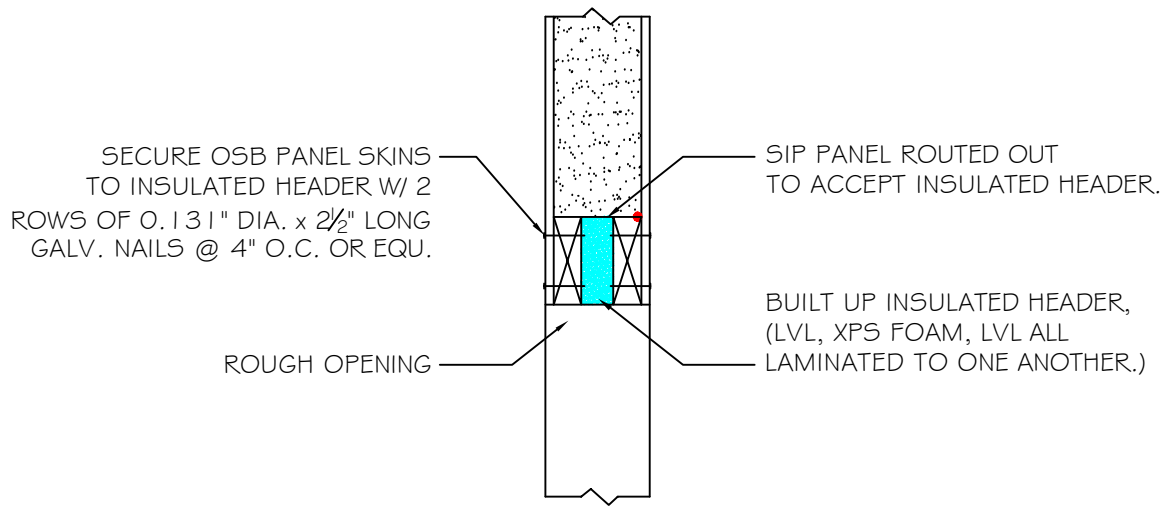
STRUCTURAL INSULATED PANELS
P.O. Box 185, 53 Slow Drive, W. Chesterfield, NH 03466

WWW.FOARDPANEL.COM

(800) - 644 - 8885

#23

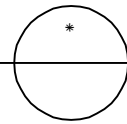
ROUGH OPENING EDGE DETAIL W/ HEADER



NOTE: ALL RED DOTS - APPLY CONTINUOUS $\frac{3}{8}$ " DIA. BEAD OF MASTIC SEALANT AT WOOD TO FOAM & WOOD TO WOOD CONNECTIONS AT INTERIOR SIDE.

DETAILS ARE TYPICAL OF STANDARD CONDITIONS AND MAY NOT APPLY TO ALL PROJECTS. REFER TO FINAL PROJECT APPROVAL DRAWINGS FOR SPECIFICATIONS. PLEASE CONTACT FPI TECHNICAL DEPARTMENT FOR QUESTIONS AND/OR CONCERNS.

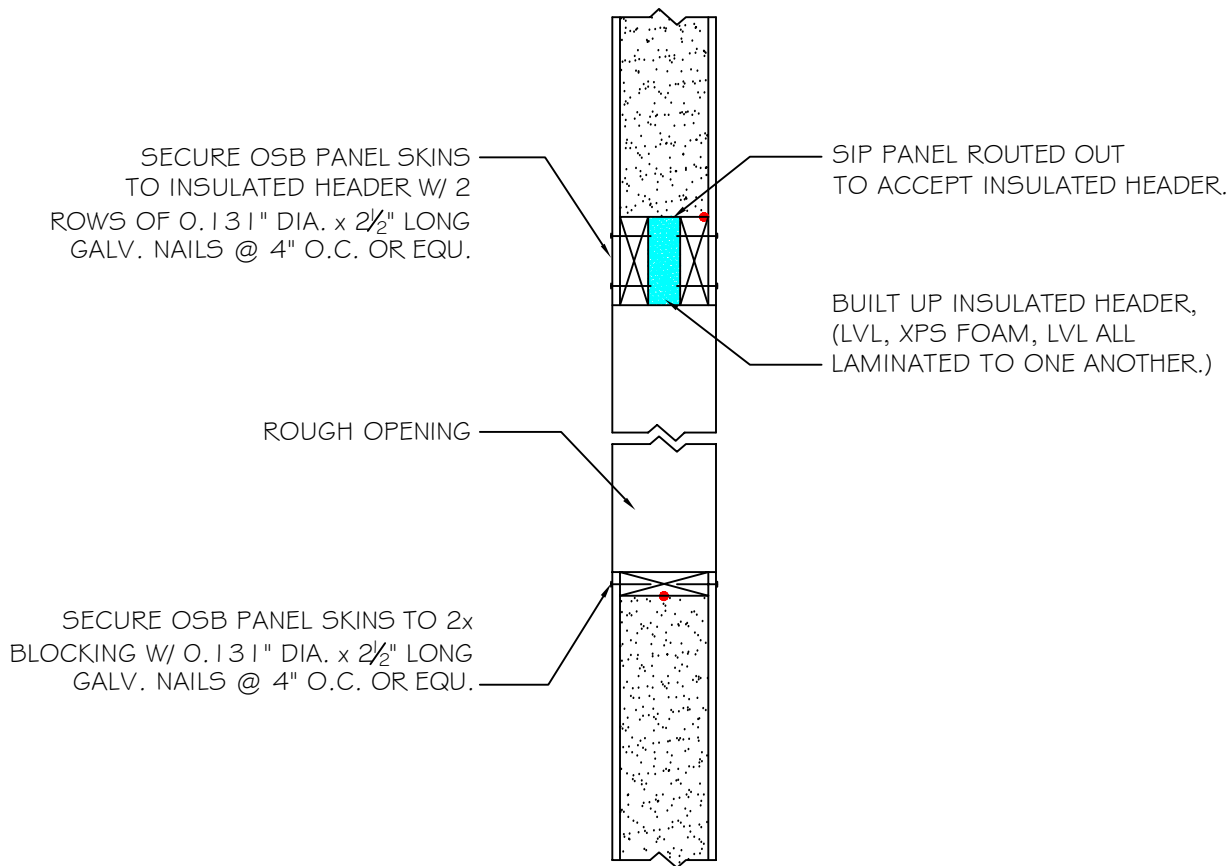
PANEL ROUGH OPENING EDGE DETAIL W/ HEADER
SCALE: 1" = 1'-0"



Foard
PANEL
STRUCTURAL INSULATED PANELS
P.O. Box 185, 53 Slow Drive, W. Chesterfield, NH 03466
WWW.FOARDPANEL.COM
(800) - 644 - 8885

#24

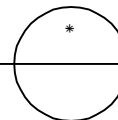
ROUGH OPENING EDGE DETAIL W/ HEADER



NOTE: ALL RED DOTS - APPLY CONTINUOUS 3/8" DIA. BEAD OF MASTIC SEALANT AT WOOD TO FOAM & WOOD TO WOOD CONNECTIONS AT INTERIOR SIDE.

DETAILS ARE TYPICAL OF STANDARD CONDITIONS AND MAY NOT APPLY TO ALL PROJECTS. REFER TO FINAL PROJECT APPROVAL DRAWINGS FOR SPECIFICATIONS. PLEASE CONTACT FPI TECHNICAL DEPARTMENT FOR QUESTIONS AND/OR CONCERNS.

PANEL ROUGH OPENING EDGE DETAIL W/ HEADER
SCALE: 1" = 1'-0"



Foard
PANEL

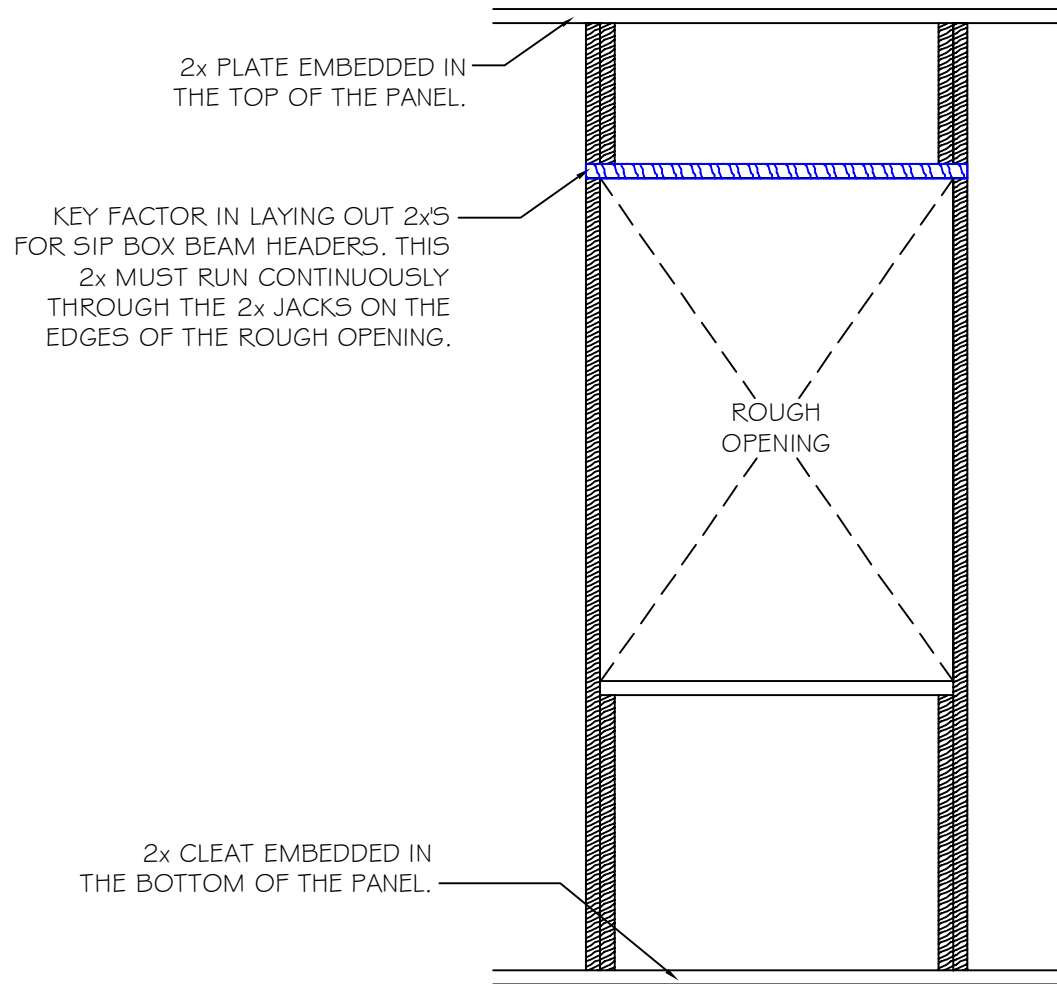
STRUCTURAL INSULATED PANELS
P.O. Box 185, 53 Slow Drive, W. Chesterfield, NH 03466

WWW.FOARDPANEL.COM

(800) - 644 - 8885

#25

SIP BOX BEAM HEADER



2x PLATE EMBEDDED IN THE TOP OF THE PANEL.

KEY FACTOR IN LAYING OUT 2x5 FOR SIP BOX BEAM HEADERS. THIS 2x MUST RUN CONTINUOUSLY THROUGH THE 2x JACKS ON THE EDGES OF THE ROUGH OPENING.

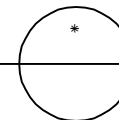
ROUGH OPENING

2x CLEAT EMBEDDED IN THE BOTTOM OF THE PANEL.

NOTE: ALL RED DOTS - APPLY CONTINUOUS $\frac{3}{8}$ " DIA. BEAD OF MASTIC SEALANT AT WOOD TO FOAM & WOOD TO WOOD CONNECTIONS AT INTERIOR SIDE.

SIP BOX BEAM HEADER DETAIL

SCALE: 1" = 1'-0"



DETAILS ARE TYPICAL OF STANDARD CONDITIONS AND MAY NOT APPLY TO ALL PROJECTS. REFER TO FINAL PROJECT APPROVAL DRAWINGS FOR SPECIFICATIONS. PLEASE CONTACT FPI TECHNICAL DEPARTMENT FOR QUESTIONS AND/OR CONCERNS.

Foard
PANEL

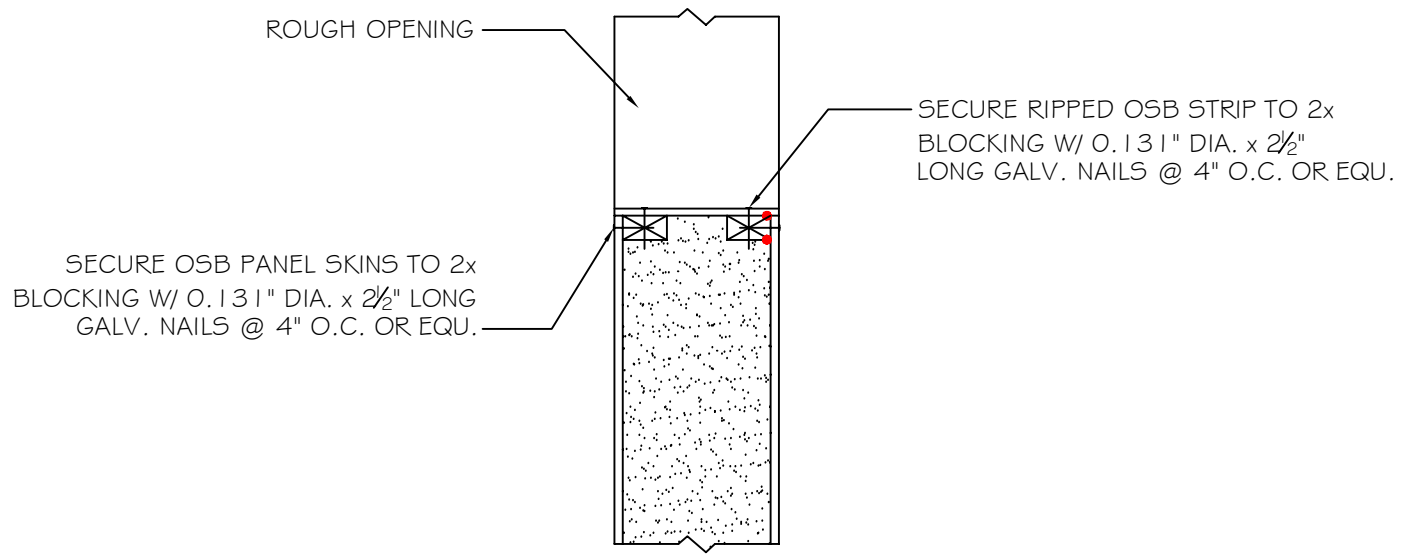
STRUCTURAL INSULATED PANELS
P.O. Box 185, 53 Slow Drive, W. Chesterfield, NH 03466

WWW.FOARDPANEL.COM

(800) - 644 - 8885

#26

PASSIVE HOUSE ROUGH OPENING DETAIL



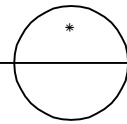
SECURE OSB PANEL SKINS TO 2x
BLOCKING W/ 0.131" DIA. x 2½" LONG
GALV. NAILS @ 4" O.C. OR EQU.

SECURE RIPPED OSB STRIP TO 2x
BLOCKING W/ 0.131" DIA. x 2½"
LONG GALV. NAILS @ 4" O.C. OR EQU.

NOTE: ALL RED DOTS - APPLY CONTINUOUS 3/8" DIA.
BEAD OF MASTIC SEALANT AT WOOD TO FOAM &
WOOD TO WOOD CONNECTIONS AT INTERIOR SIDE.

DETAILS ARE TYPICAL OF
STANDARD CONDITIONS AND
MAY NOT APPLY TO ALL
PROJECTS. REFER TO FINAL
PROJECT APPROVAL DRAWINGS
FOR SPECIFICATIONS. PLEASE
CONTACT FPI TECHNICAL
DEPARTMENT FOR QUESTIONS
AND/OR CONCERNS.

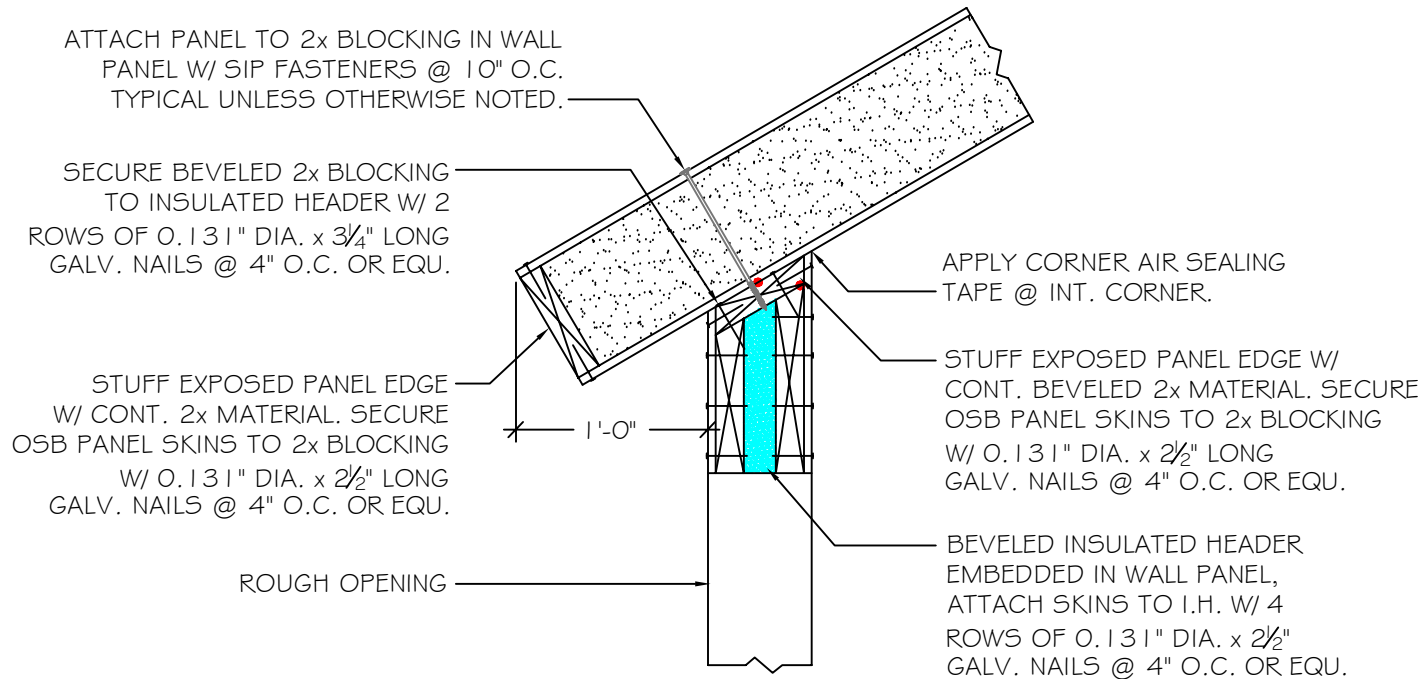
PANEL ROUGH OPENING EDGE DETAIL
SCALE: 1" = 1'-0"



Foard
PANEL
STRUCTURAL INSULATED PANELS
P.O. Box 185, 53 Slow Drive, W. Chesterfield, NH 03466
WWW.FOARDPANEL.COM
(800) - 644 - 8885

#27

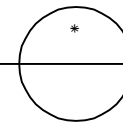
ROUGH OPENING EDGE DETAIL W/ HEADER



NOTE: ALL RED DOTS - APPLY CONTINUOUS 3/8" DIA.
BEAD OF MASTIC SEALANT AT WOOD TO FOAM &
WOOD TO WOOD CONNECTIONS AT INTERIOR SIDE.

DETAILS ARE TYPICAL OF
STANDARD CONDITIONS AND
MAY NOT APPLY TO ALL
PROJECTS. REFER TO FINAL
PROJECT APPROVAL DRAWINGS
FOR SPECIFICATIONS. PLEASE
CONTACT FPI TECHNICAL
DEPARTMENT FOR QUESTIONS
AND/OR CONCERNS.

PANEL ROUGH OPENING EDGE DETAIL W/ HEADER
SCALE: 1" = 1'-0"



Foard
PANEL

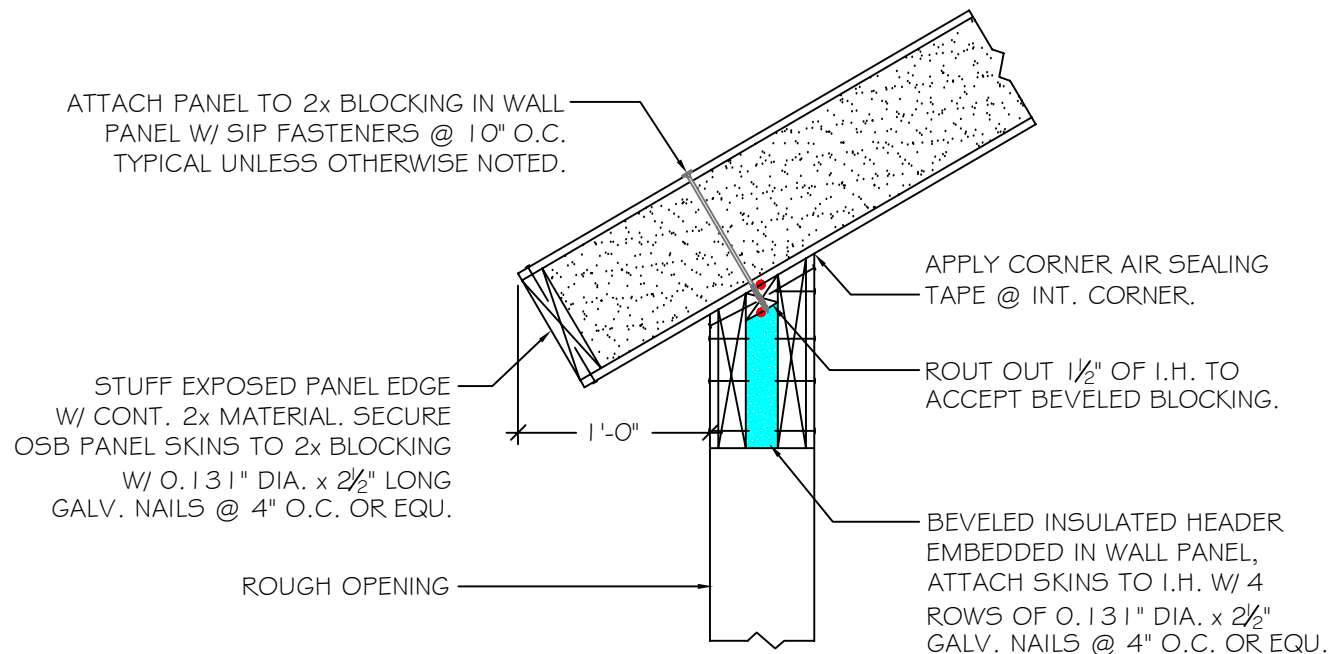
STRUCTURAL INSULATED PANELS
P.O. Box 185, 53 Slow Drive, W. Chesterfield, NH 03466

WWW.FOARDPANEL.COM

(800) - 644 - 8885

#28

ROUGH OPENING EDGE DETAIL W/ HEADER

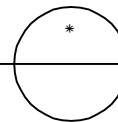


NOTE: ALL RED DOTS - APPLY CONTINUOUS 3/8" DIA.
BEAD OF MASTIC SEALANT AT WOOD TO FOAM &
WOOD TO WOOD CONNECTIONS AT INTERIOR SIDE.

DETAILS ARE TYPICAL OF
STANDARD CONDITIONS AND
MAY NOT APPLY TO ALL
PROJECTS. REFER TO FINAL
PROJECT APPROVAL DRAWINGS
FOR SPECIFICATIONS. PLEASE
CONTACT FPI TECHNICAL
DEPARTMENT FOR QUESTIONS
AND/OR CONCERNS.

PANEL ROUGH OPENING EDGE DETAIL W/ HEADER

SCALE: 1" = 1'-0"



Foard
PANEL

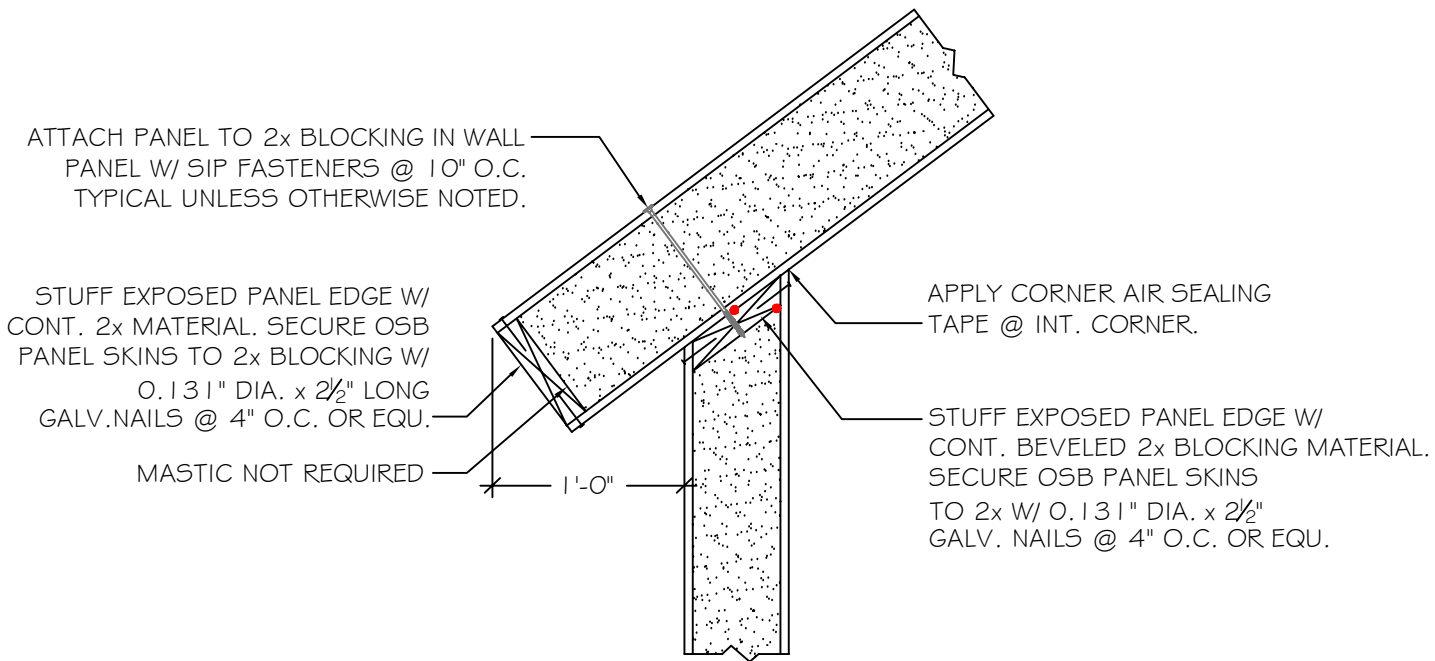
STRUCTURAL INSULATED PANELS
P.O. Box 185, 53 Slow Drive, W. Chesterfield, NH 03466

WWW.FOARDPANEL.COM

(800) - 644 - 8885

#29

SQUARE CUT EAVE OVERHANG CONNECTION

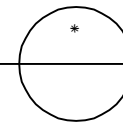


NOTE: ALL RED DOTS - APPLY CONTINUOUS 3/8" DIA.
BEAD OF MASTIC SEALANT AT WOOD TO FOAM &
WOOD TO WOOD CONNECTIONS AT INTERIOR SIDE.

DETAILS ARE TYPICAL OF
STANDARD CONDITIONS AND
MAY NOT APPLY TO ALL
PROJECTS. REFER TO FINAL
PROJECT APPROVAL DRAWINGS
FOR SPECIFICATIONS. PLEASE
CONTACT FPI TECHNICAL
DEPARTMENT FOR QUESTIONS
AND/OR CONCERNS.

PANEL EAVE CONNECTION DETAIL

SCALE: 1" = 1'-0"



Foard
PANEL

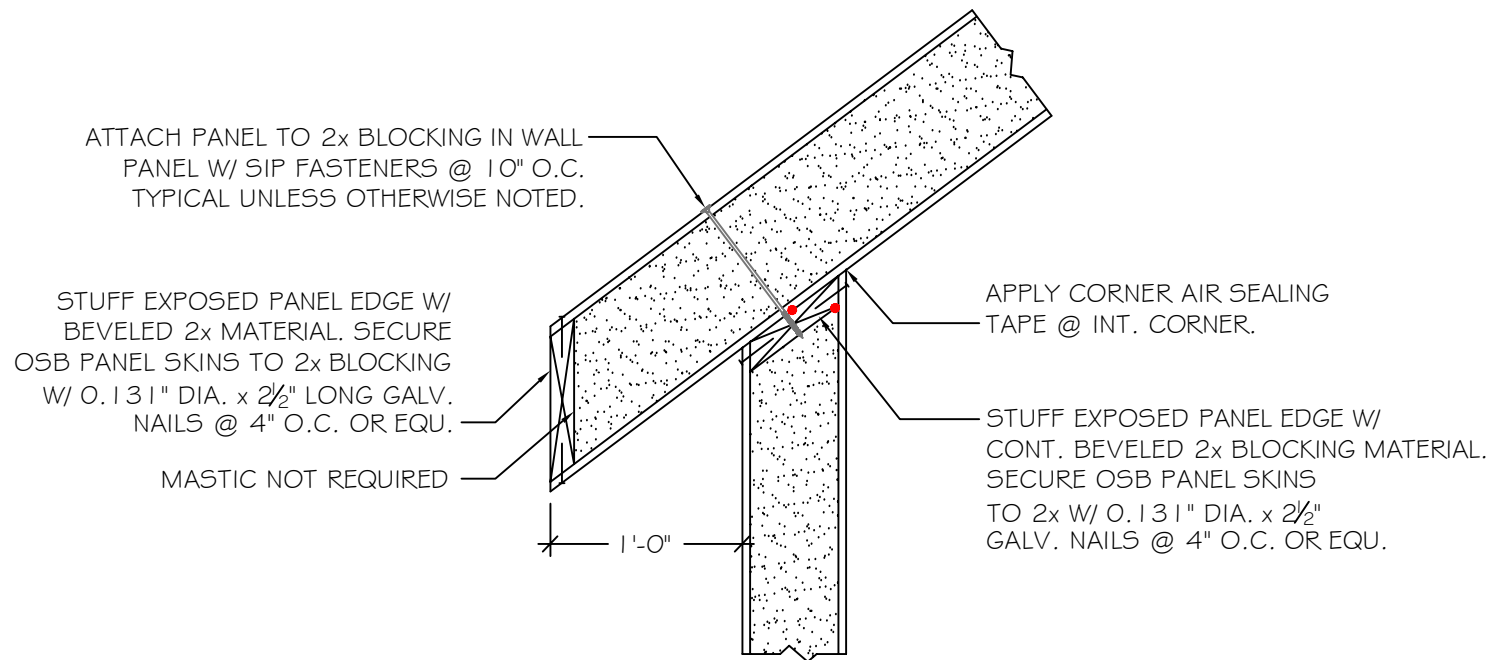
STRUCTURAL INSULATED PANELS
P.O. Box 185, 53 Slow Drive, W. Chesterfield, NH 03466

WWW.FOARDPANEL.COM

(800) - 644 - 8885

#30

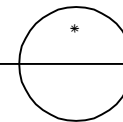
PLUMB CUT EAVE OVERHANG CONNECTION



NOTE: ALL RED DOTS - APPLY CONTINUOUS 3/8" DIA.
BEAD OF MASTIC SEALANT AT WOOD & FOAM &
WOOD TO WOOD CONNECTIONS AT INTERIOR SIDE.

PANEL EAVE CONNECTION DETAIL

SCALE: 1" = 1'-0"



DETAILS ARE TYPICAL OF
STANDARD CONDITIONS AND
MAY NOT APPLY TO ALL
PROJECTS. REFER TO FINAL
PROJECT APPROVAL DRAWINGS
FOR SPECIFICATIONS. PLEASE
CONTACT FPI TECHNICAL
DEPARTMENT FOR QUESTIONS
AND/OR CONCERNS.

Foard
PANEL

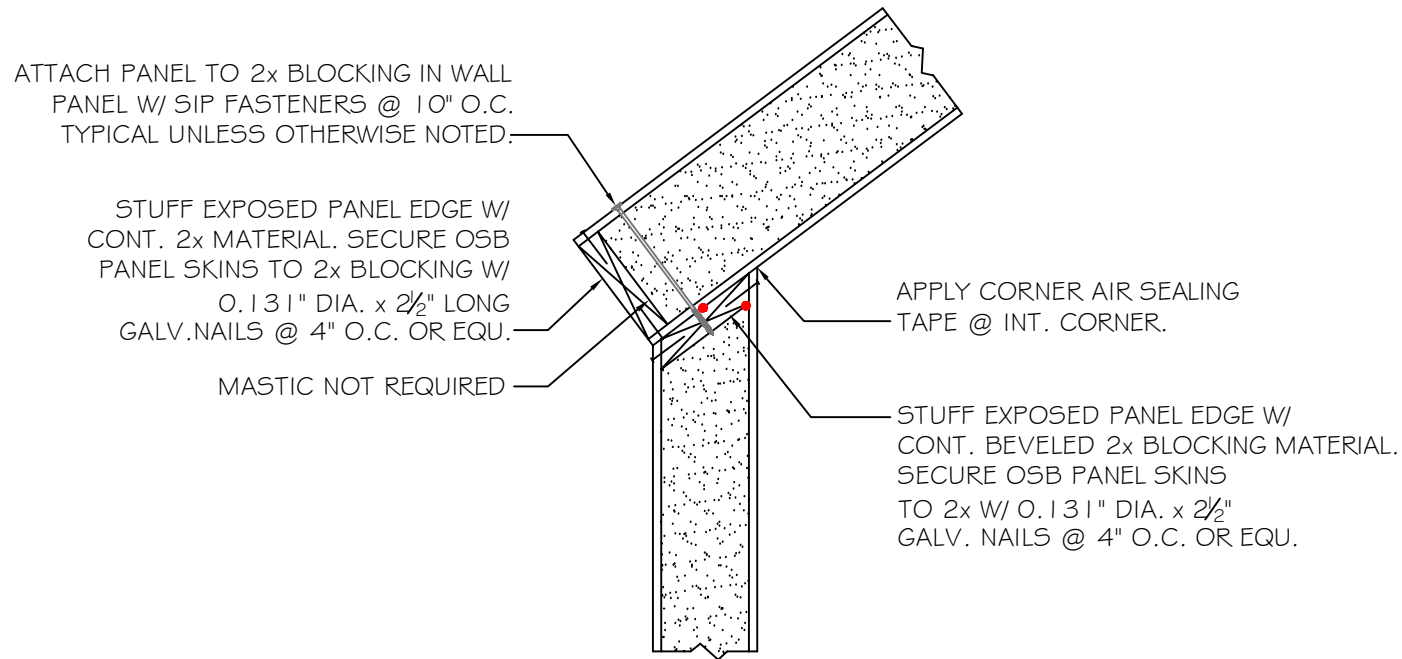
STRUCTURAL INSULATED PANELS
P.O. Box 185, 53 Slow Drive, W. Chesterfield, NH 03466

WWW.FOARDPANEL.COM

(800) - 644 - 8885

#31

SQUARE CUT EAVE CONNECTION

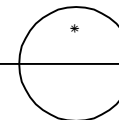


NOTE: ALL RED DOTS - APPLY CONTINUOUS 3/8" DIA.
BEAD OF MASTIC SEALANT AT WOOD & FOAM &
WOOD TO WOOD CONNECTIONS AT INTERIOR SIDE.

DETAILS ARE TYPICAL OF
STANDARD CONDITIONS AND
MAY NOT APPLY TO ALL
PROJECTS. REFER TO FINAL
PROJECT APPROVAL DRAWINGS
FOR SPECIFICATIONS. PLEASE
CONTACT FPI TECHNICAL
DEPARTMENT FOR QUESTIONS
AND/OR CONCERNS.

PANEL EAVE CONNECTION DETAIL

SCALE: 1" = 1'-0"



Foard
PANEL

STRUCTURAL INSULATED PANELS
P.O. Box 185, 53 Slow Drive, W. Chesterfield, NH 03466

WWW.FOARDPANEL.COM

(800) - 644 - 8885

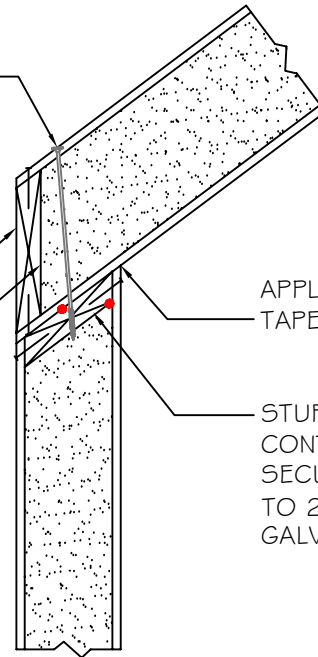
#32

PLUMB CUT EAVE CONNECTION

ATTACH PANEL TO 2x BLOCKING IN WALL
PANEL W/ SIP FASTENERS @ 10" O.C.
TYPICAL UNLESS OTHERWISE NOTED.

STUFF EXPOSED PANEL EDGE W/
BEVELED 2x MATERIAL. SECURE
OSB PANEL SKINS TO 2x BLOCKING
W/ 0.131" DIA. x 2½" LONG GALV.
NAILS @ 4" O.C. OR EQU.

MASTIC NOT REQUIRED



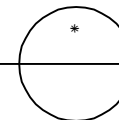
APPLY CORNER AIR SEALING
TAPE @ INT. CORNER.

STUFF EXPOSED PANEL EDGE W/
CONT. BEVELED 2x BLOCKING MATERIAL.
SECURE OSB PANEL SKINS
TO 2x W/ 0.131" DIA. x 2½"
GALV. NAILS @ 4" O.C. OR EQU.

NOTE: ALL RED DOTS - APPLY CONTINUOUS 3/8" DIA.
BEAD OF MASTIC SEALANT AT WOOD & FOAM &
WOOD TO WOOD CONNECTIONS AT INTERIOR SIDE.

PANEL EAVE CONNECTION DETAIL

SCALE: 1" = 1'-0"



DETAILS ARE TYPICAL OF
STANDARD CONDITIONS AND
MAY NOT APPLY TO ALL
PROJECTS. REFER TO FINAL
PROJECT APPROVAL DRAWINGS
FOR SPECIFICATIONS. PLEASE
CONTACT FPI TECHNICAL
DEPARTMENT FOR QUESTIONS
AND/OR CONCERNS.

Foard
PANEL

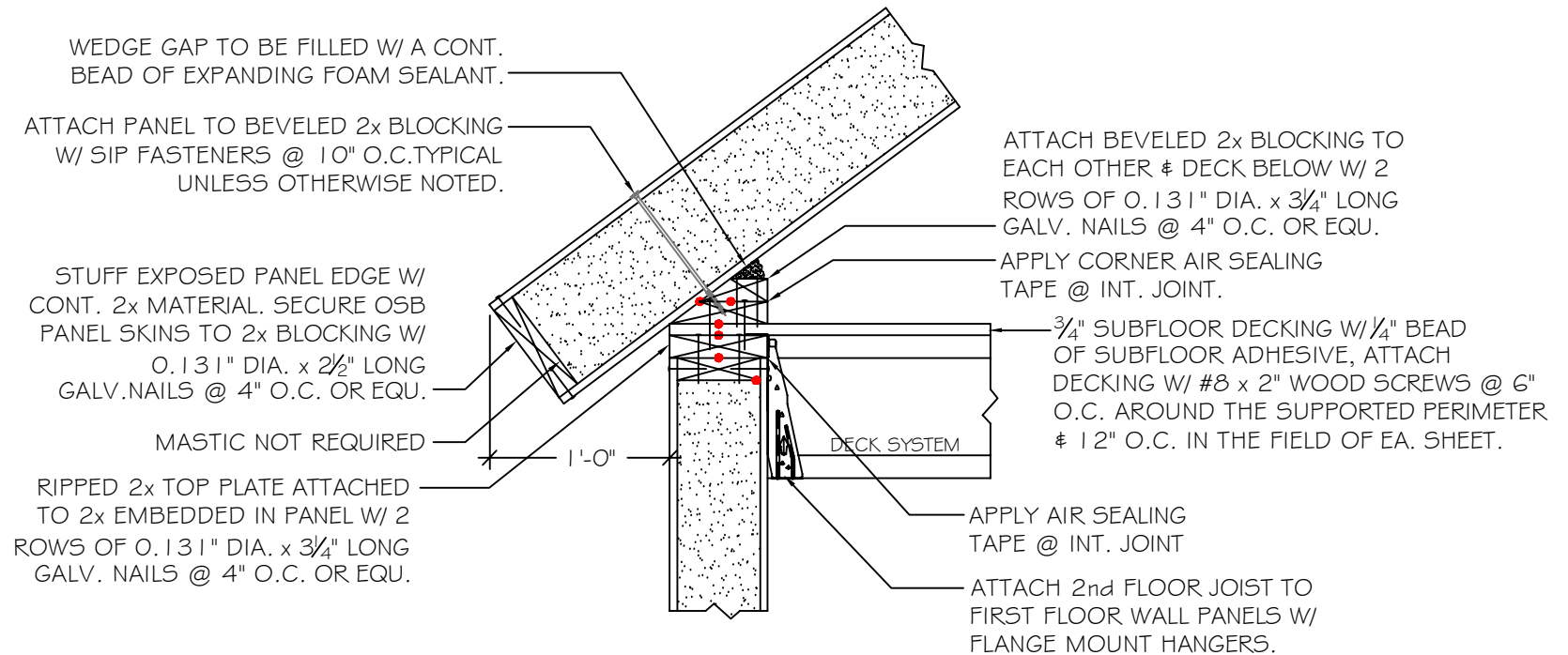
STRUCTURAL INSULATED PANELS
P.O. Box 185, 53 Slow Drive, W. Chesterfield, NH 03466

WWW.FOARDPANEL.COM

(800) - 644 - 8885

#33

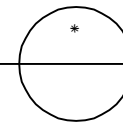
SQUARE CUT EAVE CONNECTION



NOTE: ALL RED DOTS - APPLY CONTINUOUS $\frac{3}{8}$ " DIA. BEAD OF MASTIC SEALANT AT WOOD TO FOAM & WOOD TO WOOD CONNECTIONS AT INTERIOR SIDE.

DETAILS ARE TYPICAL OF STANDARD CONDITIONS AND MAY NOT APPLY TO ALL PROJECTS. REFER TO FINAL PROJECT APPROVAL DRAWINGS FOR SPECIFICATIONS. PLEASE CONTACT FPI TECHNICAL DEPARTMENT FOR QUESTIONS AND/OR CONCERNS.

PANEL EAVE CONNECTION DETAIL
SCALE: 1" = 1'-0"



Foard
PANEL

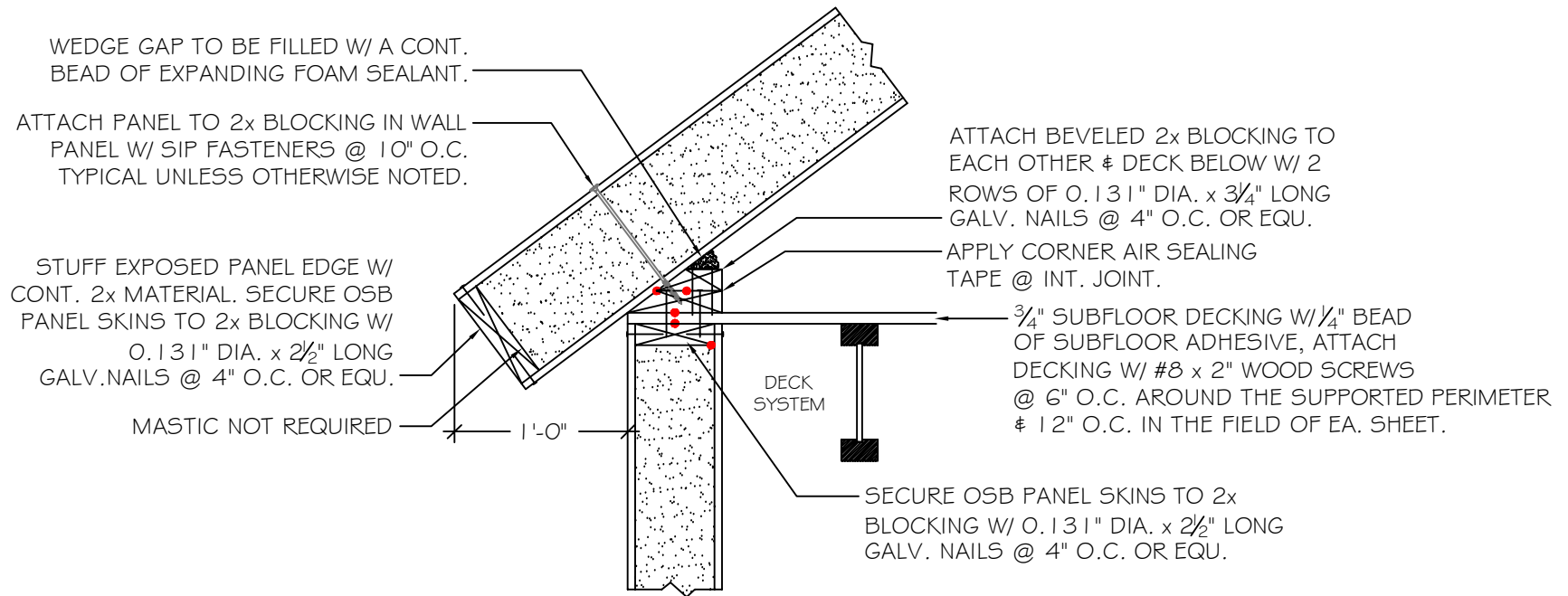
STRUCTURAL INSULATED PANELS
P.O. Box 185, 53 Slow Drive, W. Chesterfield, NH 03466

WWW.FOARDPANEL.COM

(800) - 644 - 8885

#34

SQUARE CUT EAVE CONNECTION

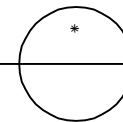


NOTE: ALL RED DOTS - APPLY CONTINUOUS 3/8" DIA. BEAD OF MASTIC SEALANT AT WOOD & FOAM & WOOD TO WOOD CONNECTIONS AT INTERIOR SIDE.

DETAILS ARE TYPICAL OF STANDARD CONDITIONS AND MAY NOT APPLY TO ALL PROJECTS. REFER TO FINAL PROJECT APPROVAL DRAWINGS FOR SPECIFICATIONS. PLEASE CONTACT FPI TECHNICAL DEPARTMENT FOR QUESTIONS AND/OR CONCERNS.

PANEL EAVE CONNECTION DETAIL

SCALE: 1" = 1'-0"



Foard
PANEL

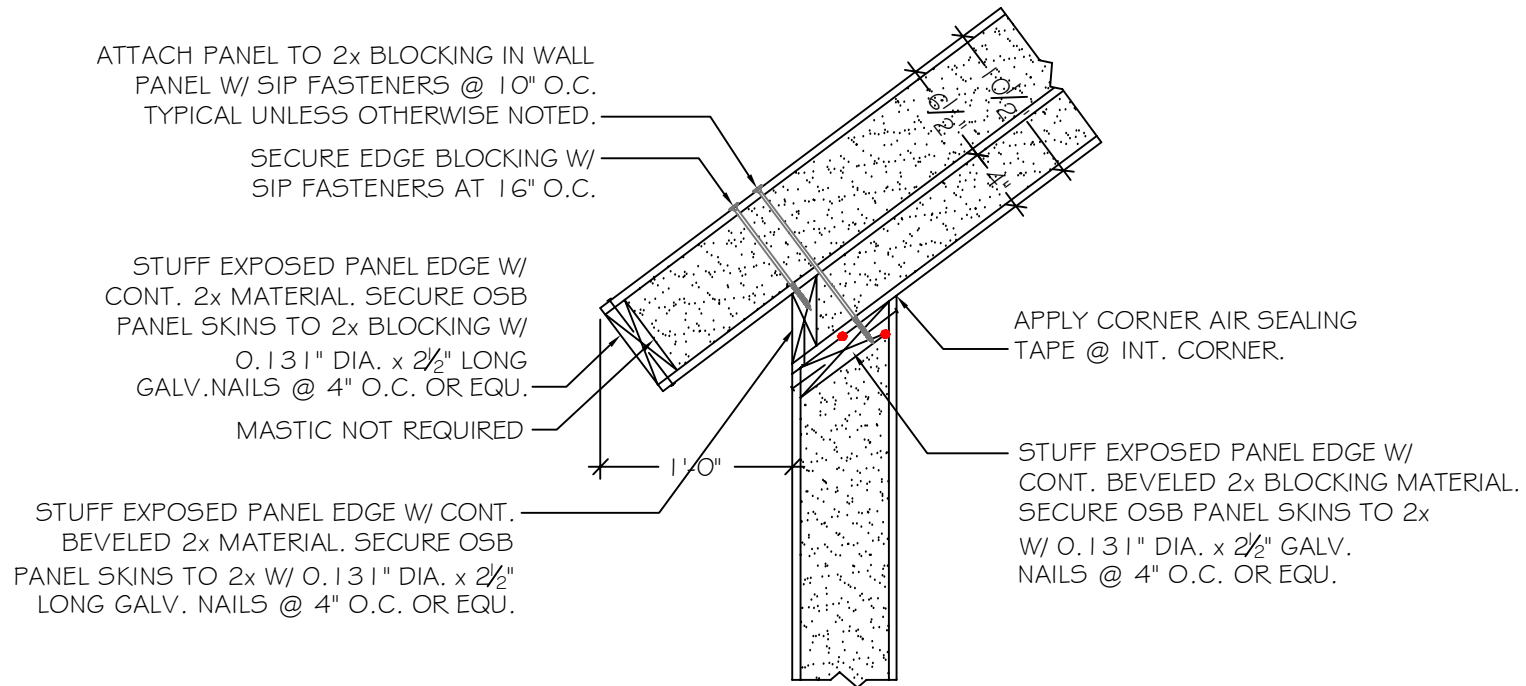
STRUCTURAL INSULATED PANELS
P.O. Box 185, 53 Slow Drive, W. Chesterfield, NH 03466

WWW.FOARDPANEL.COM

(800) - 644 - 8885

#35

SQUARE CUT EAVE CONNECTION

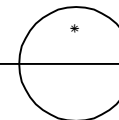


NOTE: ALL RED DOTS - APPLY CONTINUOUS 3/8" DIA.
BEAD OF MASTIC SEALANT AT WOOD TO FOAM &
WOOD TO WOOD CONNECTIONS AT INTERIOR SIDE.

DETAILS ARE TYPICAL OF
STANDARD CONDITIONS AND
MAY NOT APPLY TO ALL
PROJECTS. REFER TO FINAL
PROJECT APPROVAL DRAWINGS
FOR SPECIFICATIONS. PLEASE
CONTACT FPI TECHNICAL
DEPARTMENT FOR QUESTIONS
AND/OR CONCERNS.

PANEL EAVE CONNECTION DETAIL

SCALE: 1" = 1'-0"



Foard
PANEL

STRUCTURAL INSULATED PANELS
P.O. Box 185, 53 Slow Drive, W. Chesterfield, NH 03466

WWW.FOARDPANEL.COM

(800) - 644 - 8885

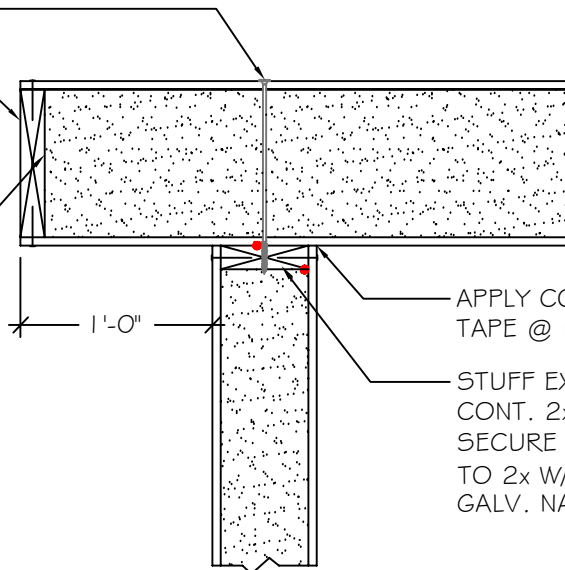
#36

RAKE OVERHANG CONNECTION

ATTACH PANEL TO 2x BLOCKING IN WALL
PANEL W/ 1 2" SIP FASTENERS @ 10" O.C.
TYPICAL UNLESS OTHERWISE NOTED.

STUFF EXPOSED PANEL EDGE W/
CONT. 2x MATERIAL. SECURE OSB
PANEL SKINS TO 2x BLOCKING W/
0.131" DIA. x 2 1/2" LONG GALV.
NAILS @ 4" O.C. OR EQU.

MASTIC NOT REQUIRED



APPLY CORNER AIR SEALING
TAPE @ INT. CORNER.

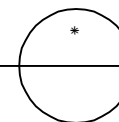
STUFF EXPOSED PANEL EDGE W/
CONT. 2x BLOCKING MATERIAL.
SECURE OSB PANEL SKINS
TO 2x W/ 0.131" DIA. x 2 1/2"
GALV. NAILS @ 4" O.C. OR EQU.

NOTE: ALL RED DOTS - APPLY CONTINUOUS 3/8" DIA.
BEAD OF MASTIC SEALANT AT WOOD & FOAM &
WOOD TO WOOD CONNECTIONS AT INTERIOR SIDE.

DETAILS ARE TYPICAL OF
STANDARD CONDITIONS AND
MAY NOT APPLY TO ALL
PROJECTS. REFER TO FINAL
PROJECT APPROVAL DRAWINGS
FOR SPECIFICATIONS. PLEASE
CONTACT FPI TECHNICAL
DEPARTMENT FOR QUESTIONS
AND/OR CONCERNS.

PANEL RAKE CONNECTION DETAIL

SCALE: 1" = 1'-0"



Foard
PANEL

STRUCTURAL INSULATED PANELS
P.O. Box 185, 53 Slow Drive, W. Chesterfield, NH 03466

WWW.FOARDPANEL.COM

(800) - 644 - 8885

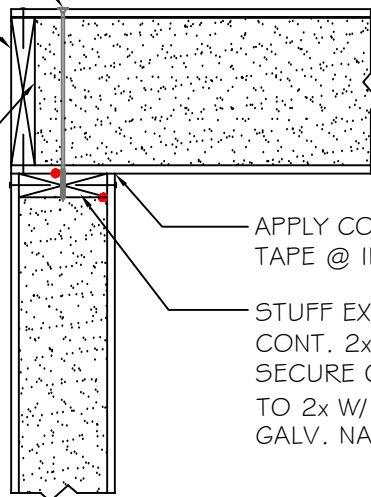
#37

RAKE CONNECTION

ATTACH PANEL TO 2x BLOCKING IN WALL
PANEL W/ 1 2" SIP FASTENERS @ 10" O.C.
TYPICAL UNLESS OTHERWISE NOTED.

STUFF EXPOSED PANEL EDGE W/
CONT. 2x MATERIAL. SECURE OSB
PANEL SKINS TO 2x BLOCKING W/
O. 1 3/8" DIA. x 2 1/2" LONG GALV.
NAILS @ 4" O.C. OR EQU.

MASTIC NOT REQUIRED



APPLY CORNER AIR SEALING
TAPE @ INT. CORNER.

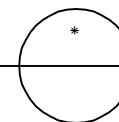
STUFF EXPOSED PANEL EDGE W/
CONT. 2x BLOCKING MATERIAL.
SECURE OSB PANEL SKINS
TO 2x W/ O. 1 3/8" DIA. x 2 1/2"
GALV. NAILS @ 4" O.C. OR EQU.

NOTE: ALL RED DOTS - APPLY CONTINUOUS 3/8" DIA.
BEAD OF MASTIC SEALANT AT WOOD TO FOAM &
WOOD TO WOOD CONNECTIONS AT INTERIOR SIDE.

DETAILS ARE TYPICAL OF
STANDARD CONDITIONS AND
MAY NOT APPLY TO ALL
PROJECTS. REFER TO FINAL
PROJECT APPROVAL DRAWINGS
FOR SPECIFICATIONS. PLEASE
CONTACT FPI TECHNICAL
DEPARTMENT FOR QUESTIONS
AND/OR CONCERNS.

PANEL RAKE CONNECTION DETAIL

SCALE: 1" = 1'-0"



Foard
PANEL

STRUCTURAL INSULATED PANELS
P.O. Box 185, 53 Slow Drive, W. Chesterfield, NH 03466

WWW.FOARDPANEL.COM

(800) - 644 - 8885

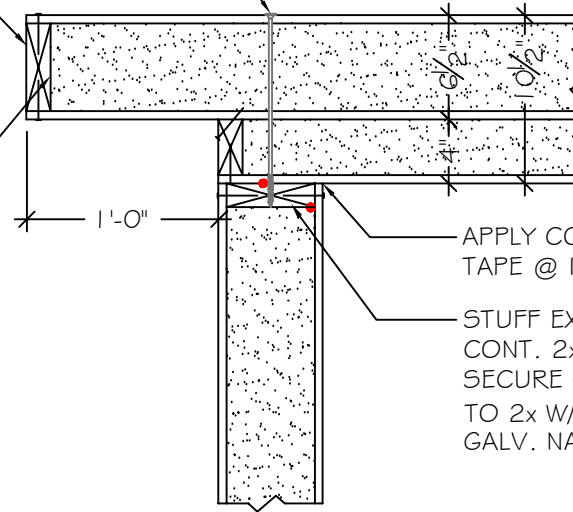
#38

RAKE CONNECTION - PENTALAM

ATTACH PANEL TO 2x BLOCKING IN WALL
PANEL W/ SIP FASTENERS @ 10" O.C.
TYPICAL UNLESS OTHERWISE NOTED.

STUFF EXPOSED PANEL EDGE W/
CONT. 2x MATERIAL. SECURE OSB
PANEL SKINS TO 2x BLOCKING W/
0.131" DIA. x 2½" LONG GALV.
NAILS @ 4" O.C. OR EQU.

MASTIC NOT REQUIRED



APPLY CORNER AIR SEALING
TAPE @ INT. CORNER.

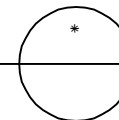
STUFF EXPOSED PANEL EDGE W/
CONT. 2x BLOCKING MATERIAL.
SECURE OSB PANEL SKINS
TO 2x W/ 0.131" DIA. x 2½"
GALV. NAILS @ 4" O.C. OR EQU.

NOTE: ALL RED DOTS - APPLY CONTINUOUS 3/8" DIA.
BEAD OF MASTIC SEALANT AT WOOD & FOAM &
WOOD TO WOOD CONNECTIONS AT INTERIOR SIDE.

DETAILS ARE TYPICAL OF
STANDARD CONDITIONS AND
MAY NOT APPLY TO ALL
PROJECTS. REFER TO FINAL
PROJECT APPROVAL DRAWINGS
FOR SPECIFICATIONS. PLEASE
CONTACT FPI TECHNICAL
DEPARTMENT FOR QUESTIONS
AND/OR CONCERNS.

PANEL RAKE CONNECTION DETAIL

SCALE: 1" = 1'-0"



Foard
PANEL

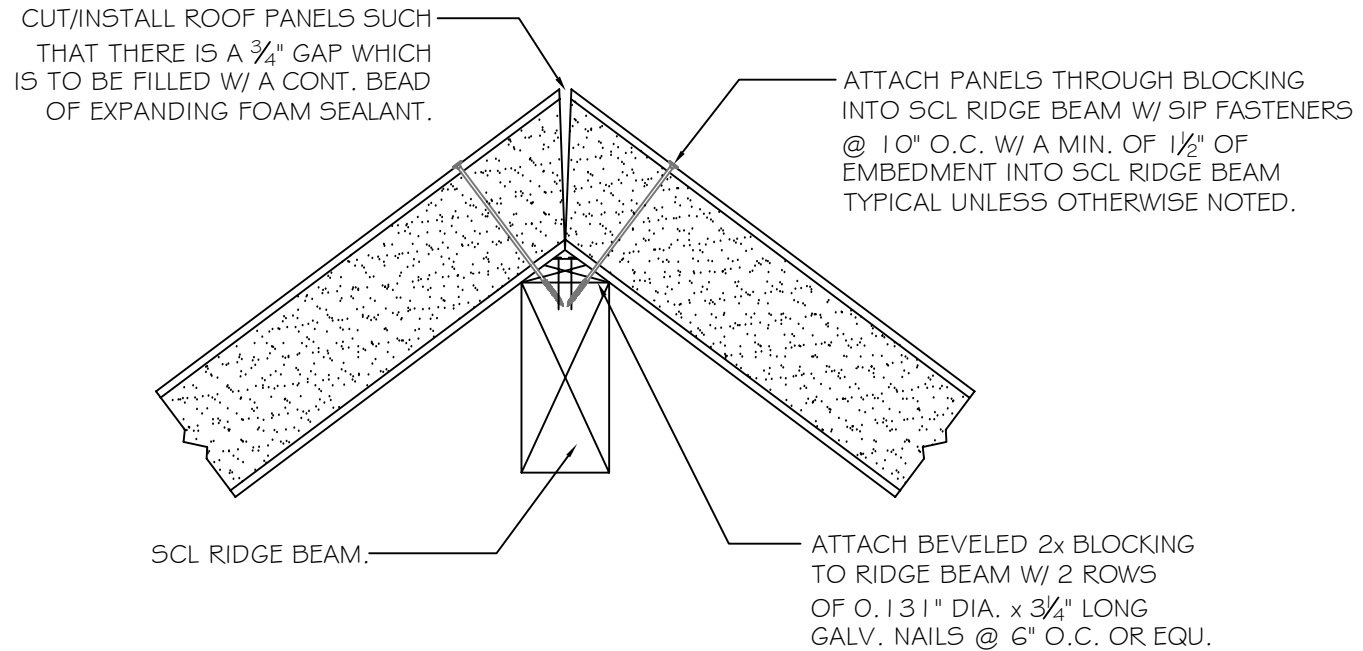
STRUCTURAL INSULATED PANELS
P.O. Box 185, 53 Slow Drive, W. Chesterfield, NH 03466

WWW.FOARDPANEL.COM

(800) - 644 - 8885

#39

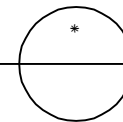
FOAM GAP RIDGE CONNECTION



DETAILS ARE TYPICAL OF STANDARD CONDITIONS AND MAY NOT APPLY TO ALL PROJECTS. REFER TO FINAL PROJECT APPROVAL DRAWINGS FOR SPECIFICATIONS. PLEASE CONTACT FPI TECHNICAL DEPARTMENT FOR QUESTIONS AND/OR CONCERNS.

PANEL RIDGE CONNECTION DETAIL

SCALE: 1" = 1'-0"



Foard
PANEL

STRUCTURAL INSULATED PANELS
P.O. Box 185, 53 Slow Drive, W. Chesterfield, NH 03466

WWW.FOARDPANEL.COM

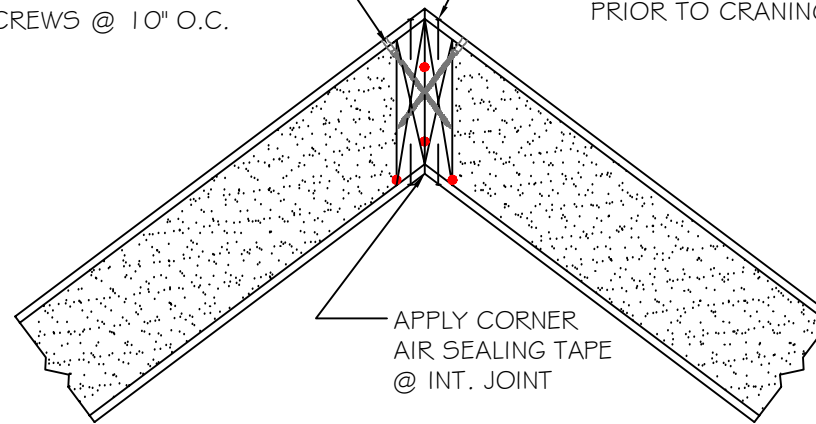
(800) - 644 - 8885

#40

STRUCTURAL RIDGE CONNECTION

STUFF EXPOSED RIDGE W/ LVL BEVELED
BLOCKING MATERIAL. ATTACH LVL'S TO
EACH OTHER W/ COUNTER SUNK SIMPSON
SDWC15600 SCREWS @ 10" O.C.

SECURE OSB PANEL SKINS TO BEVELED
LVL MATERIAL W/ 0.131" DIA. x 2½"
LONG GALV. NAILS @ 4" O.C. OR EQU.
PRIOR TO CRANING INTO PLACE.

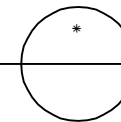


APPLY CORNER
AIR SEALING TAPE
@ INT. JOINT

NOTE: ALL RED DOTS - APPLY CONTINUOUS 3/8" DIA.
BEAD OF MASTIC SEALANT AT WOOD TO FOAM &
WOOD TO WOOD CONNECTIONS AT INTERIOR SIDE.

PANEL RIDGE CONNECTION DETAIL

SCALE: 1" = 1'-0"



DETAILS ARE TYPICAL OF
STANDARD CONDITIONS AND
MAY NOT APPLY TO ALL
PROJECTS. REFER TO FINAL
PROJECT APPROVAL DRAWINGS
FOR SPECIFICATIONS. PLEASE
CONTACT FPI TECHNICAL
DEPARTMENT FOR QUESTIONS
AND/OR CONCERNS.

Foard
PANEL

STRUCTURAL INSULATED PANELS
P.O. Box 185, 53 Slow Drive, W. Chesterfield, NH 03466

WWW.FOARDPANEL.COM

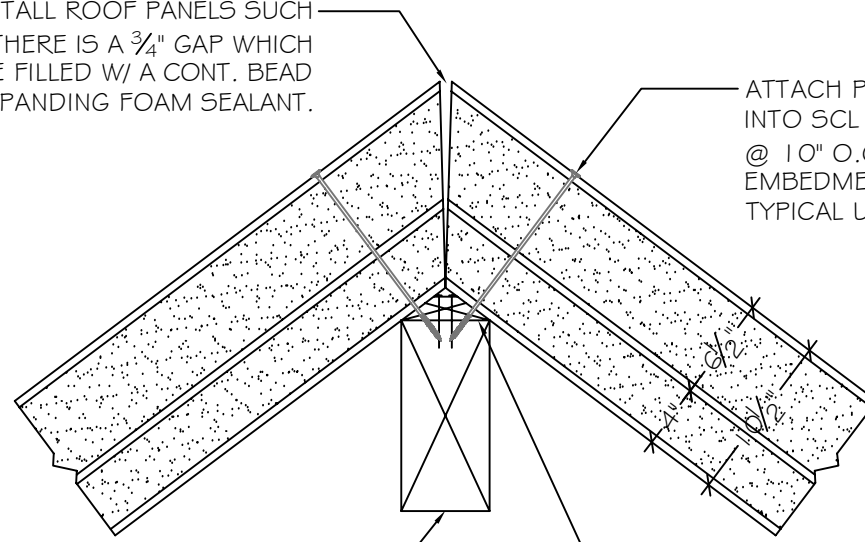
(800) - 644 - 8885

#41

FOAM GAP RIDGE CONNECTION

CUT/INSTALL ROOF PANELS SUCH THAT THERE IS A $\frac{3}{4}$ " GAP WHICH IS TO BE FILLED W/ A CONT. BEAD OF EXPANDING FOAM SEALANT.

ATTACH PANELS THROUGH BLOCKING INTO SCL RIDGE BEAM W/ SIP FASTENERS @ 10" O.C. W/ A MIN. OF $\frac{1}{2}$ " OF EMBEDMENT INTO SCL RIDGE BEAM TYPICAL UNLESS OTHERWISE NOTED.



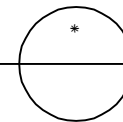
SCL RIDGE BEAM.

ATTACH BEVELED 2x BLOCKING TO RIDGE BEAM W/ 2 ROWS OF 0.131" DIA. x $\frac{3}{4}$ " LONG GALV. NAILS @ 6" O.C. OR EQU.

DETAILS ARE TYPICAL OF STANDARD CONDITIONS AND MAY NOT APPLY TO ALL PROJECTS. REFER TO FINAL PROJECT APPROVAL DRAWINGS FOR SPECIFICATIONS. PLEASE CONTACT FPI TECHNICAL DEPARTMENT FOR QUESTIONS AND/OR CONCERNS.

PANEL RIDGE CONNECTION DETAIL

SCALE: 1" = 1'-0"



Foard
PANEL

STRUCTURAL INSULATED PANELS
P.O. Box 185, 53 Slow Drive, W. Chesterfield, NH 03466

WWW.FOARDPANEL.COM

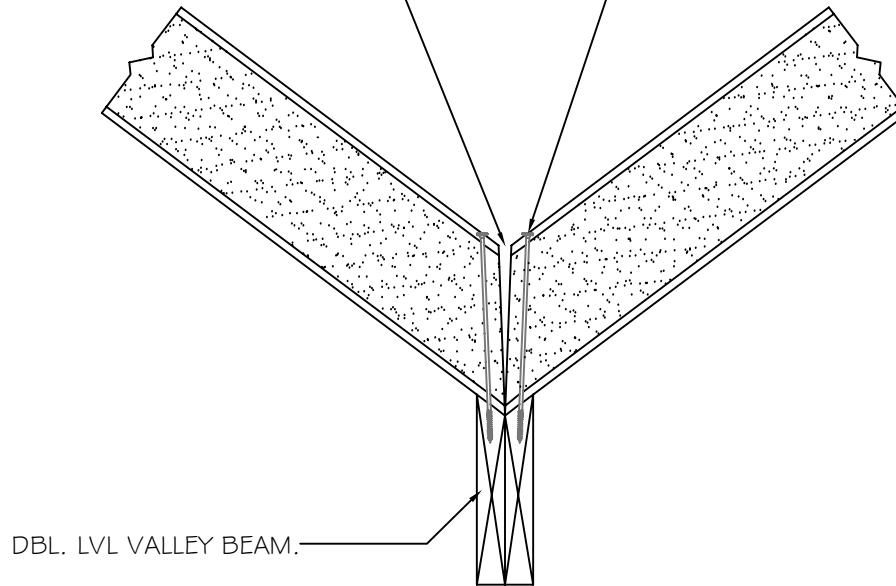
(800) - 644 - 8885

#42

FOAM GAP VALLEY CONNECTION

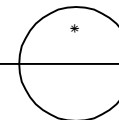
CUT/INSTALL ROOF PANELS SUCH THAT THERE IS A $\frac{3}{4}$ " GAP WHICH IS TO BE FILLED W/ A CONT. BEAD OF EXPANDING FOAM SEALANT.

ATTACH PANELS TO BLOCKING ON DBL. LVL VALLEY BEAM W/ SIP FASTENERS @ 10" O.C. TYPICAL UNLESS OTHERWISE NOTED.



DETAILS ARE TYPICAL OF STANDARD CONDITIONS AND MAY NOT APPLY TO ALL PROJECTS. REFER TO FINAL PROJECT APPROVAL DRAWINGS FOR SPECIFICATIONS. PLEASE CONTACT FPI TECHNICAL DEPARTMENT FOR QUESTIONS AND/OR CONCERNS.

PANEL VALLEY CONNECTION DETAIL
SCALE: 1" = 1'-0"



Foard
PANEL

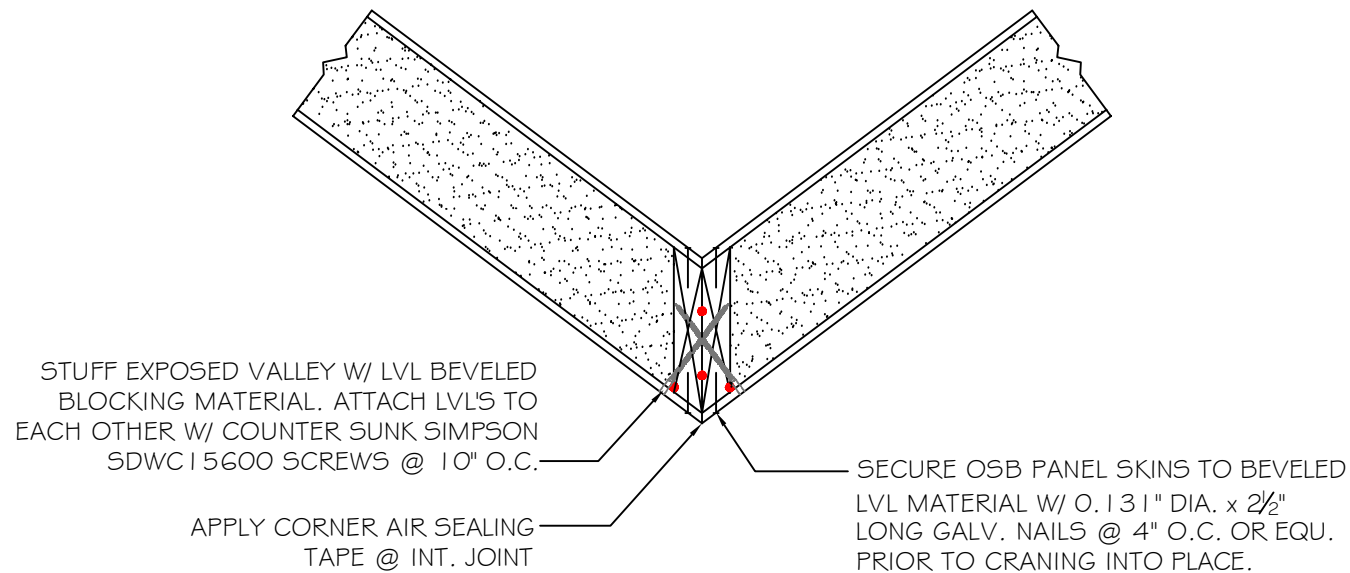
STRUCTURAL INSULATED PANELS
P.O. Box 185, 53 Slow Drive, W. Chesterfield, NH 03466

WWW.FOARDPANEL.COM

(800) - 644 - 8885

#43

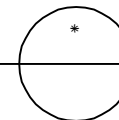
STRUCTURAL VALLEY CONNECTION



NOTE: ALL RED DOTS - APPLY CONTINUOUS 3/8" DIA. BEAD OF MASTIC SEALANT AT WOOD TO FOAM & WOOD TO WOOD CONNECTIONS AT INTERIOR SIDE.

PANEL VALLEY CONNECTION DETAIL

SCALE: 1" = 1'-0"



DETAILS ARE TYPICAL OF STANDARD CONDITIONS AND MAY NOT APPLY TO ALL PROJECTS. REFER TO FINAL PROJECT APPROVAL DRAWINGS FOR SPECIFICATIONS. PLEASE CONTACT FPI TECHNICAL DEPARTMENT FOR QUESTIONS AND/OR CONCERNS.

Foard
PANEL

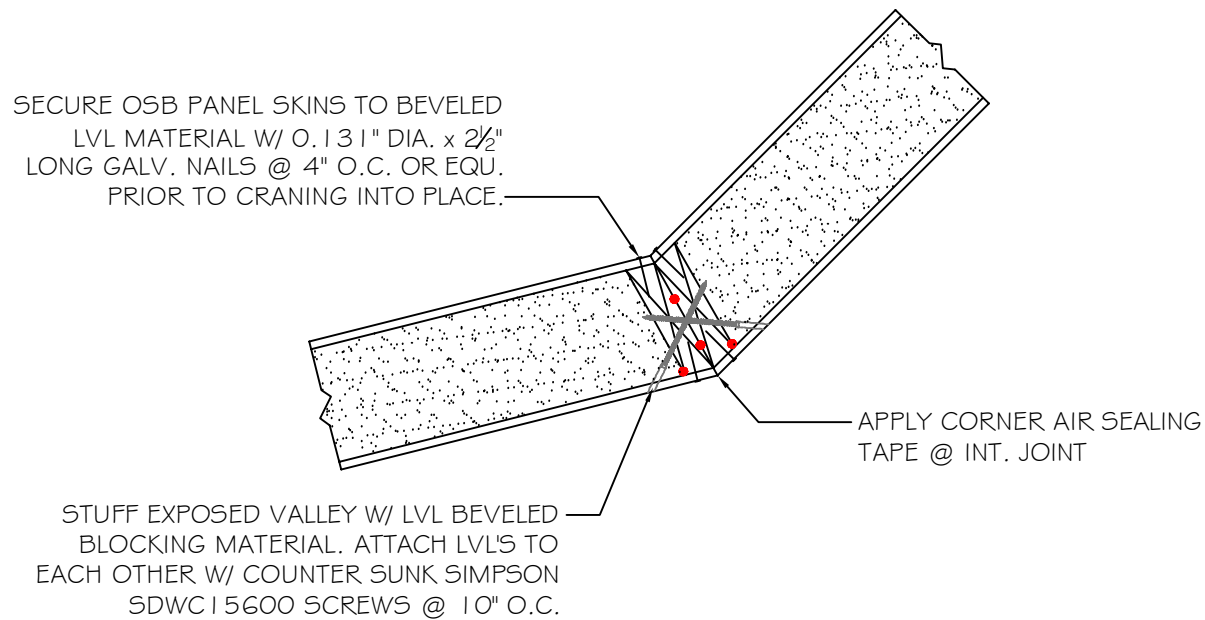
STRUCTURAL INSULATED PANELS
P.O. Box 185, 53 Slow Drive, W. Chesterfield, NH 03466

WWW.FOARDPANEL.COM

(800) - 644 - 8885

#44

STRUCTURAL VALLEY CONNECTION

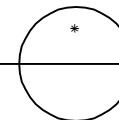


NOTE: ALL RED DOTS - APPLY CONTINUOUS 3/8" DIA. BEAD OF MASTIC SEALANT AT WOOD TO FOAM & WOOD TO WOOD CONNECTIONS AT INTERIOR SIDE.

PANEL VALLEY CONNECTION DETAIL

SCALE: 1" = 1'-0"

DETAILS ARE TYPICAL OF STANDARD CONDITIONS AND MAY NOT APPLY TO ALL PROJECTS. REFER TO FINAL PROJECT APPROVAL DRAWINGS FOR SPECIFICATIONS. PLEASE CONTACT FPI TECHNICAL DEPARTMENT FOR QUESTIONS AND/OR CONCERNS.



Foard
PANEL

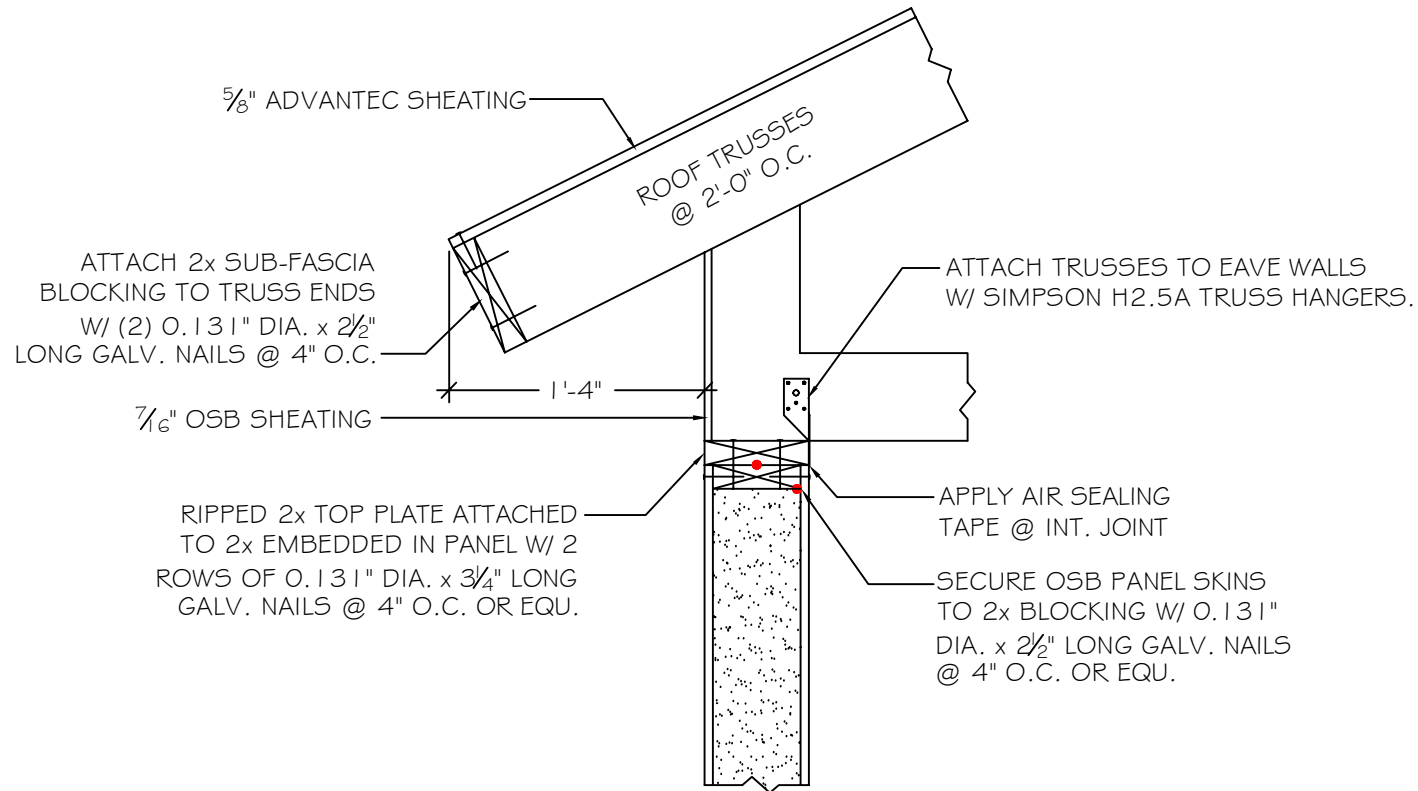
STRUCTURAL INSULATED PANELS
P.O. Box 185, 53 Slow Drive, W. Chesterfield, NH 03466

WWW.FOARDPANEL.COM

(800) - 644 - 8885

#45

TRUSS CONNECTION DETAIL

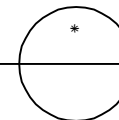


NOTE: ALL RED DOTS - APPLY CONTINUOUS 3/8" DIA. BEAD OF MASTIC SEALANT AT WOOD TO FOAM & WOOD TO WOOD CONNECTIONS AT INTERIOR SIDE.

DETAILS ARE TYPICAL OF STANDARD CONDITIONS AND MAY NOT APPLY TO ALL PROJECTS. REFER TO FINAL PROJECT APPROVAL DRAWINGS FOR SPECIFICATIONS. PLEASE CONTACT FPI TECHNICAL DEPARTMENT FOR QUESTIONS AND/OR CONCERNS.

TRUSS CONNECTION DETAIL

SCALE: 1" = 1'-0"



Foard
PANEL

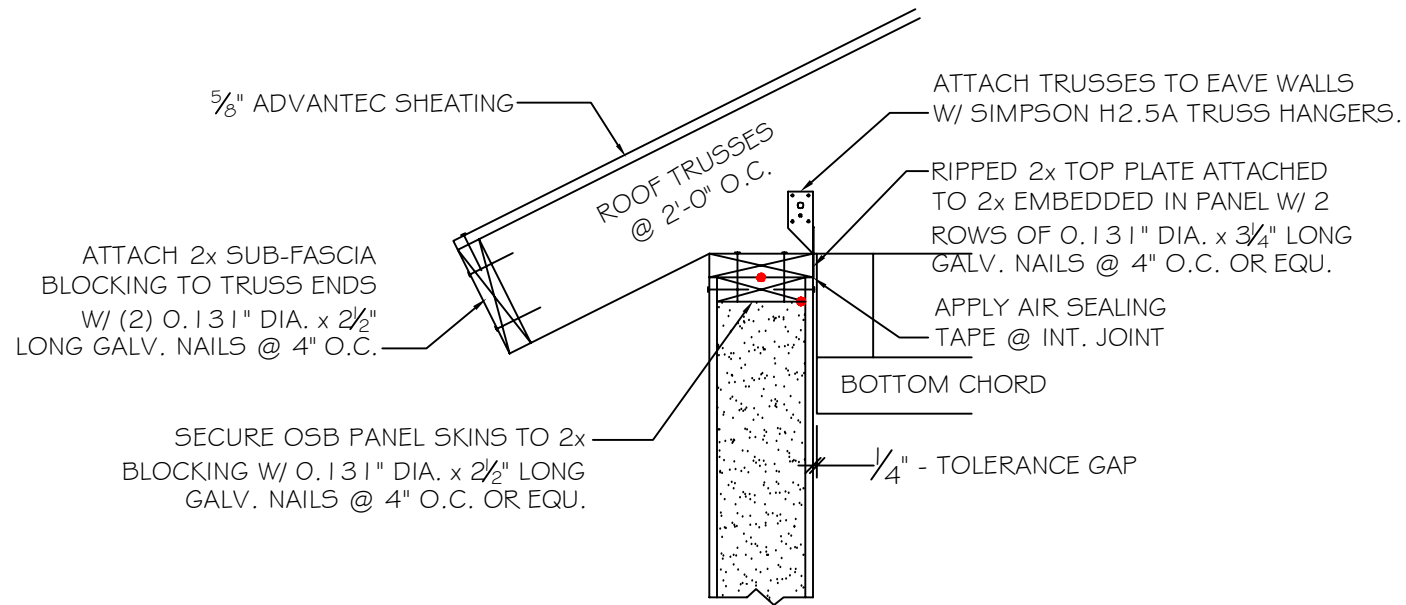
STRUCTURAL INSULATED PANELS
P.O. Box 185, 53 Slow Drive, W. Chesterfield, NH 03466

WWW.FOARDPANEL.COM

(800) - 644 - 8885

#46

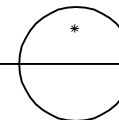
TRUSS CONNECTION DETAIL



NOTE: ALL RED DOTS - APPLY CONTINUOUS 3/8" DIA. BEAD OF MASTIC SEALANT AT WOOD TO FOAM & WOOD TO WOOD CONNECTIONS AT INTERIOR SIDE.

DETAILS ARE TYPICAL OF STANDARD CONDITIONS AND MAY NOT APPLY TO ALL PROJECTS. REFER TO FINAL PROJECT APPROVAL DRAWINGS FOR SPECIFICATIONS. PLEASE CONTACT FPI TECHNICAL DEPARTMENT FOR QUESTIONS AND/OR CONCERNS.

DROPPED HEEL TRUSS CONNECTION DETAIL
SCALE: 1" = 1'-0"



Foard
PANEL

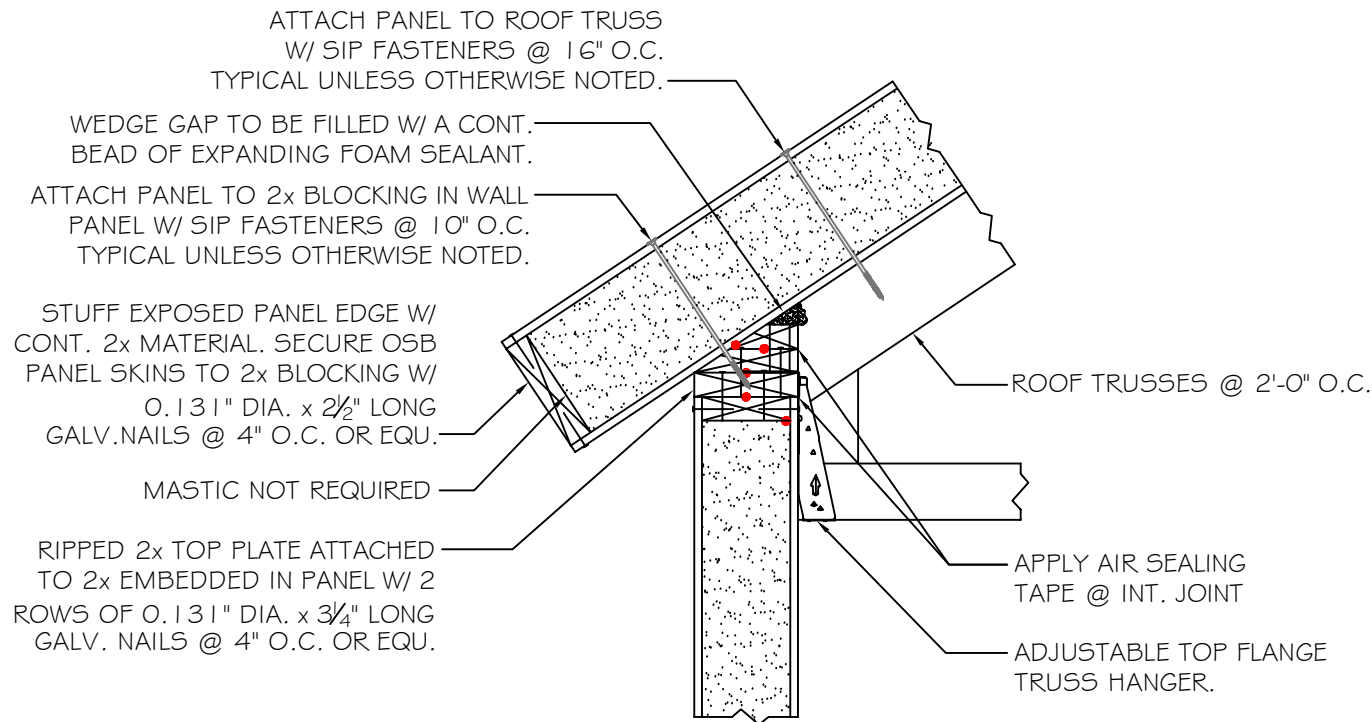
STRUCTURAL INSULATED PANELS
P.O. Box 185, 53 Slow Drive, W. Chesterfield, NH 03466

WWW.FOARDPANEL.COM

(800) - 644 - 8885

#47

TRUSS CONNECTION DETAIL

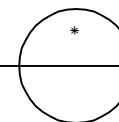


NOTE: ALL RED DOTS - APPLY CONTINUOUS 3/8" DIA.
BEAD OF MASTIC SEALANT AT WOOD & FOAM &
WOOD TO WOOD CONNECTIONS AT INTERIOR SIDE.

DETAILS ARE TYPICAL OF
STANDARD CONDITIONS AND
MAY NOT APPLY TO ALL
PROJECTS. REFER TO FINAL
PROJECT APPROVAL DRAWINGS
FOR SPECIFICATIONS. PLEASE
CONTACT FPI TECHNICAL
DEPARTMENT FOR QUESTIONS
AND/OR CONCERNS.

DROPPED HEEL TRUSS W/ ROOF PANEL

SCALE: 1" = 1'-0"



Foard
PANEL

STRUCTURAL INSULATED PANELS
P.O. Box 185, 53 Slow Drive, W. Chesterfield, NH 03466

WWW.FOARDPANEL.COM

(800) - 644 - 8885

#48

PANEL TO TRUSS CONNECTION DETAIL

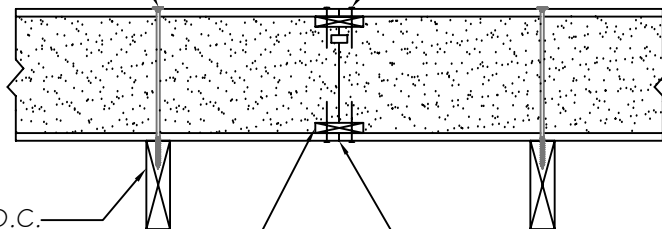
ATTACH ROOF PANELS TO TRUSSES BELOW W/ SIP FASTENERS @ 16" O.C. TYPICAL UNLESS OTHERWISE NOTED.

SECURE OSB PANEL SKINS TO SPLINE W/ 0.131" DIA. x 2 1/2" LONG GALV. NAILS @ 6" O.C. OR EQU. EACH SIDE, EACH FACE.

ROOF TRUSSES @ 2'-0" O.C.

5/8" x 2 3/4" CDX PLYWOOD SPLINE.

FLOATING ROOF PANEL JOINT BETWEEN RAFTERS.



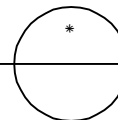
DRILL AND FILL METHOD:

FROM EXTERIOR DRILL 3/8" DIA. HOLES IN PANEL CONNECTION @ 10" O.C. FOR WALL PANELS & @ 6" O.C. FOR ROOF PANELS ALONG ENTIRE LENGTH OF JOINT. INJECT FOAM INTO CAVITY FOR APPR. 5 SECONDS. FOAM MUST BE ALLOWED TO CURE FOR AT LEAST 24 HOURS BEFORE HARDENED FOAM BALLS ARE REMOVED FROM THE EXTERIOR. INJECT FOAM AS CLOSE AS POSSIBLE TO INTERIOR SKIN OF PANEL.

DETAILS ARE TYPICAL OF STANDARD CONDITIONS AND MAY NOT APPLY TO ALL PROJECTS. REFER TO FINAL PROJECT APPROVAL DRAWINGS FOR SPECIFICATIONS. PLEASE CONTACT FPI TECHNICAL DEPARTMENT FOR QUESTIONS AND/OR CONCERNS.

PANEL TO TRUSS CONNECTION DETAIL

SCALE: 1" = 1'-0"



Foard PANEL

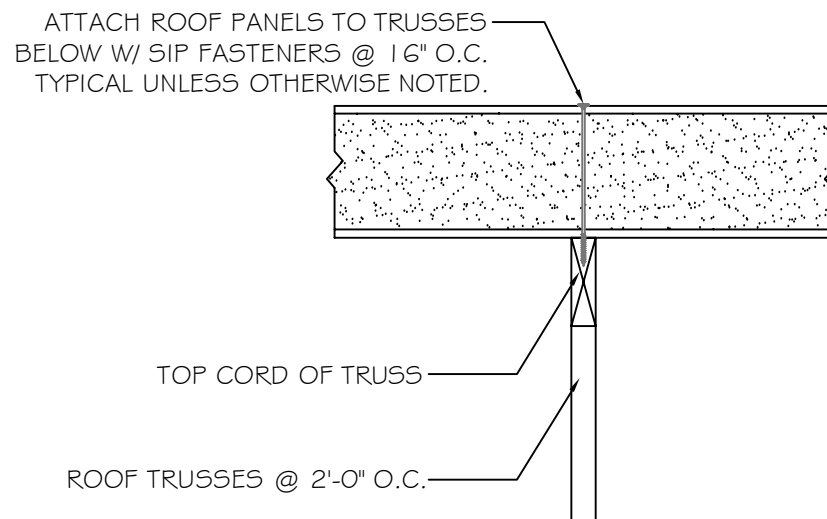
STRUCTURAL INSULATED PANELS
P.O. Box 185, 53 Slow Drive, W. Chesterfield, NH 03466

WWW.FOARDPANEL.COM

(800) - 644 - 8885

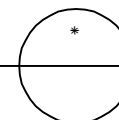
#49

PANEL TO TRUSS CONNECTION DETAIL



DETAILS ARE TYPICAL OF
STANDARD CONDITIONS AND
MAY NOT APPLY TO ALL
PROJECTS. REFER TO FINAL
PROJECT APPROVAL DRAWINGS
FOR SPECIFICATIONS. PLEASE
CONTACT FPI TECHNICAL
DEPARTMENT FOR QUESTIONS
AND/OR CONCERNS.

PANEL TO TRUSS CONNECTION DETAIL
SCALE: 1" = 1'-0"



Foard
PANEL

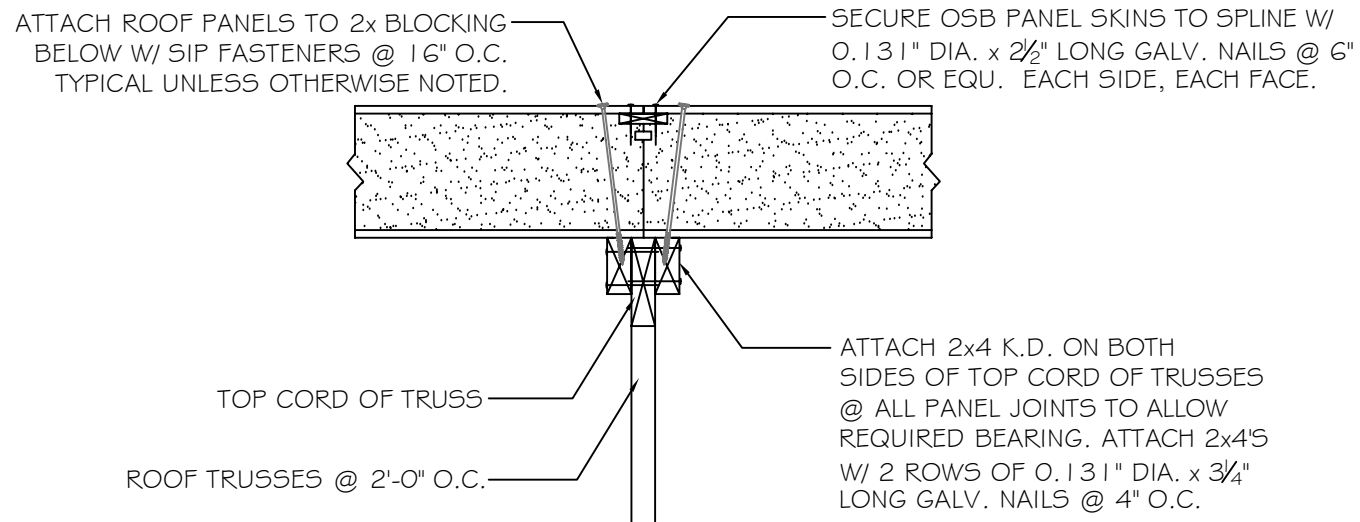
STRUCTURAL INSULATED PANELS
P.O. Box 185, 53 Slow Drive, W. Chesterfield, NH 03466

WWW.FOARDPANEL.COM

(800) - 644 - 8885

#50

PANEL TO TRUSS CONNECTION DETAIL

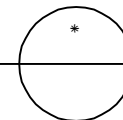


DRILL AND FILL METHOD:

FROM EXTERIOR DRILL 3/8" DIA. HOLES IN PANEL CONNECTION @ 10" O.C. FOR WALL PANELS & @ 6" O.C. FOR ROOF PANELS ALONG ENTIRE LENGTH OF JOINT. INJECT FOAM INTO CAVITY FOR APPR. 5 SECONDS. FOAM MUST BE ALLOWED TO CURE FOR AT LEAST 24 HOURS BEFORE HARDENED FOAM BALLS ARE REMOVED FROM THE EXTERIOR. INJECT FOAM AS CLOSE AS POSSIBLE TO INTERIOR SKIN OF PANEL.

PANEL TO TRUSS CONNECTION DETAIL

SCALE: 1" = 1'-0"



DETAILS ARE TYPICAL OF STANDARD CONDITIONS AND MAY NOT APPLY TO ALL PROJECTS. REFER TO FINAL PROJECT APPROVAL DRAWINGS FOR SPECIFICATIONS. PLEASE CONTACT FPI TECHNICAL DEPARTMENT FOR QUESTIONS AND/OR CONCERNS.

Foard
PANEL

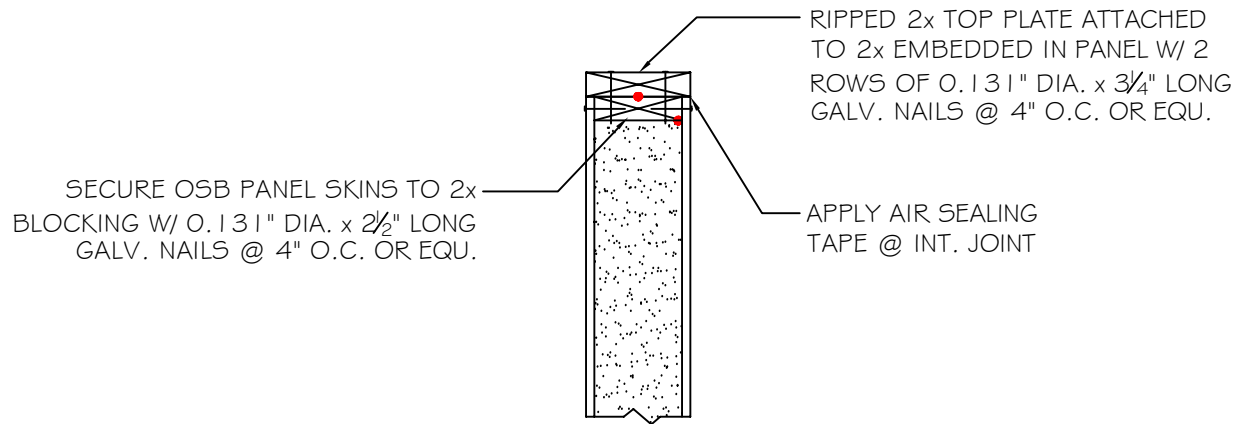
STRUCTURAL INSULATED PANELS
P.O. Box 185, 53 Slow Drive, W. Chesterfield, NH 03466

WWW.FOARDPANEL.COM

(800) - 644 - 8885

#51

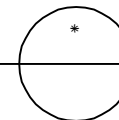
TOP OF WALL DETAIL



NOTE: ALL RED DOTS - APPLY CONTINUOUS 3/8" DIA. BEAD OF MASTIC SEALANT AT WOOD TO FOAM & WOOD TO WOOD CONNECTIONS AT INTERIOR SIDE.

DETAILS ARE TYPICAL OF STANDARD CONDITIONS AND MAY NOT APPLY TO ALL PROJECTS. REFER TO FINAL PROJECT APPROVAL DRAWINGS FOR SPECIFICATIONS. PLEASE CONTACT FPI TECHNICAL DEPARTMENT FOR QUESTIONS AND/OR CONCERNS.

TOP OF WALL DETAIL
SCALE: 1" = 1'-0"



Foard
PANEL

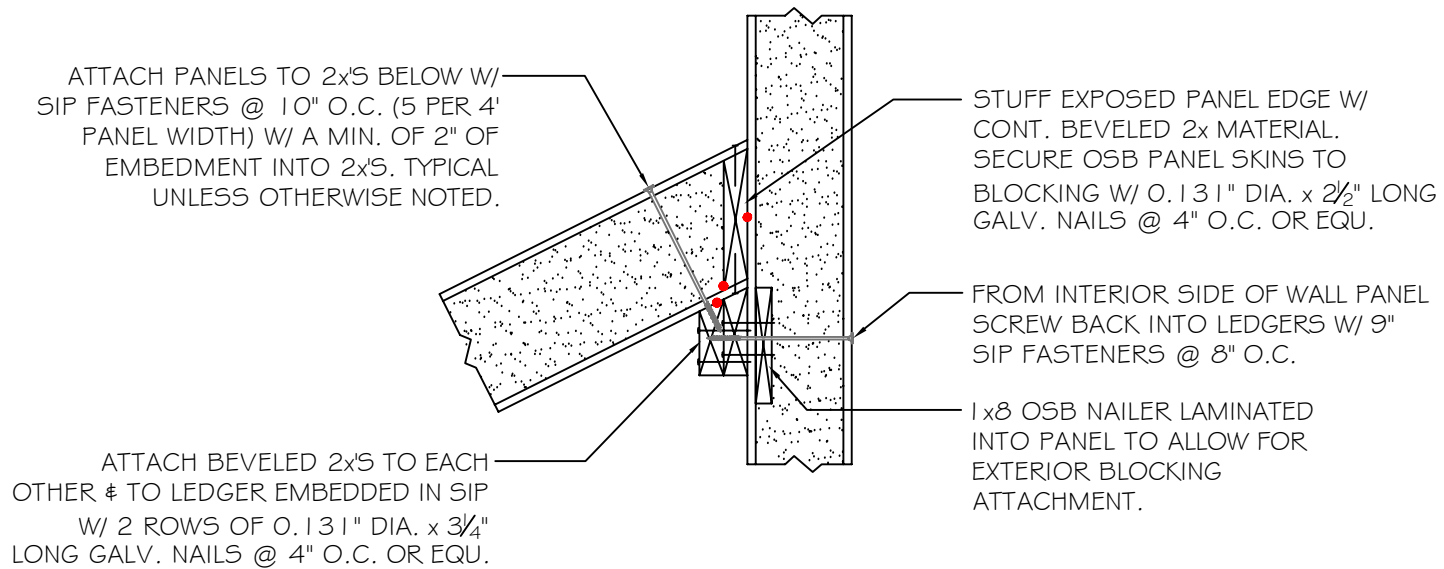
STRUCTURAL INSULATED PANELS
P.O. Box 185, 53 Slow Drive, W. Chesterfield, NH 03466

WWW.FOARDPANEL.COM

(800) - 644 - 8885

#52

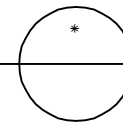
ROOF PANEL TO LEDGER ATTACHMENT



NOTE: ALL RED DOTS - APPLY CONTINUOUS 3/8" DIA.
BEAD OF MASTIC SEALANT AT WOOD TO FOAM &
WOOD TO WOOD CONNECTIONS AT INTERIOR SIDE.

ROOF TO LEDGER ATTACHMENT DETAIL

SCALE: 1" = 1'-0"



DETAILS ARE TYPICAL OF
STANDARD CONDITIONS AND
MAY NOT APPLY TO ALL
PROJECTS. REFER TO FINAL
PROJECT APPROVAL DRAWINGS
FOR SPECIFICATIONS. PLEASE
CONTACT FPI TECHNICAL
DEPARTMENT FOR QUESTIONS
AND/OR CONCERNS.

Foard
PANEL

STRUCTURAL INSULATED PANELS
P.O. Box 185, 53 Slow Drive, W. Chesterfield, NH 03466

WWW.FOARDPANEL.COM

(800) - 644 - 8885

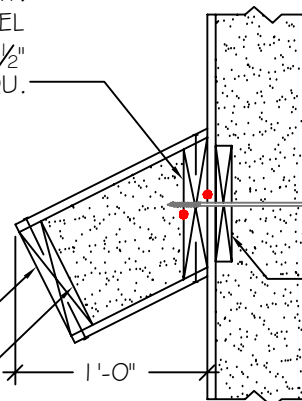
#53

ROOF PANEL TO LEDGER ATTACHMENT

STUFF EXPOSED PANEL EDGE W/ CONT. BEVELED 2x MATERIAL. SECURE OSB PANEL SKINS TO BLOCKING W/ 0.131" DIA. x 2 1/2" LONG GALV. NAILS @ 4" O.C. OR EQU.

STUFF EXPOSED PANEL EDGE W/ CONT. 2x MATERIAL. SECURE OSB PANEL SKINS TO 2x BLOCKING W/ 0.131" DIA. x 2 1/2" LONG GALV. NAILS @ 4" O.C. OR EQU.

MASTIC NOT REQUIRED



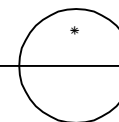
FROM INTERIOR SIDE OF WALL PANEL SCREW BACK INTO LEDGERS W/ 2 ROWS OF PANEL SCREWS @ 8" O.C.

1x8 OSB NAILER LAMINATED INTO PANEL TO ALLOW FOR EXTERIOR BLOCKING ATTACHMENT.

NOTE: ALL RED DOTS - APPLY CONTINUOUS 3/8" DIA. BEAD OF MASTIC SEALANT AT WOOD TO FOAM & WOOD TO WOOD CONNECTIONS AT INTERIOR SIDE.

ROOF TO LEDGER ATTACHMENT DETAIL

SCALE: 1" = 1'-0"



DETAILS ARE TYPICAL OF STANDARD CONDITIONS AND MAY NOT APPLY TO ALL PROJECTS. REFER TO FINAL PROJECT APPROVAL DRAWINGS FOR SPECIFICATIONS. PLEASE CONTACT FPI TECHNICAL DEPARTMENT FOR QUESTIONS AND/OR CONCERNS.

Foard
PANEL

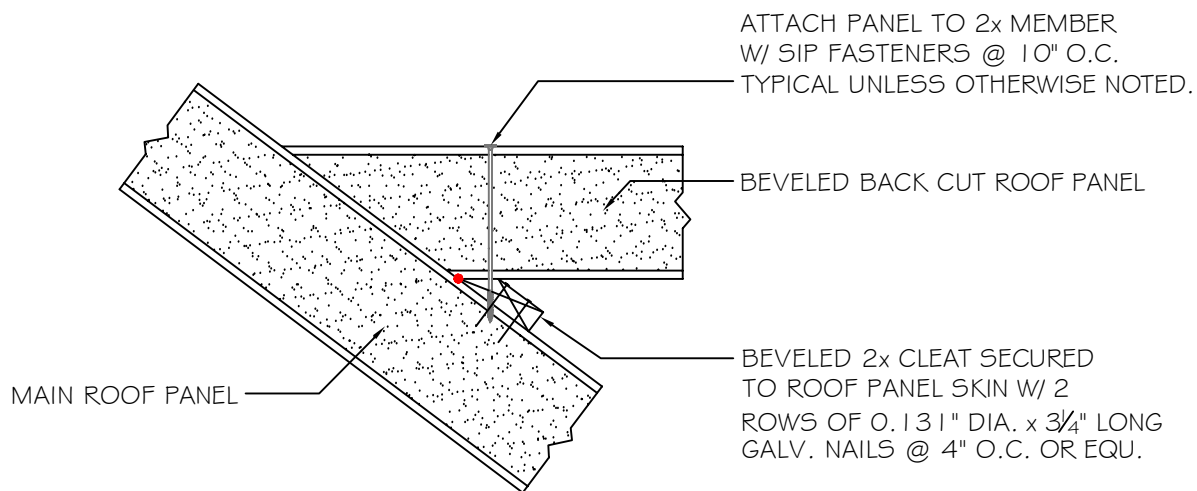
STRUCTURAL INSULATED PANELS
P.O. Box 185, 53 Slow Drive, W. Chesterfield, NH 03466

WWW.FOARDPANEL.COM

(800) - 644 - 8885

#54

ROOF PANEL BACK CUT CONNECTION

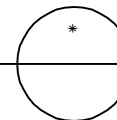


NOTE: ALL RED DOTS - APPLY CONTINUOUS 3/8" DIA.
BEAD OF MASTIC SEALANT AT WOOD TO FOAM &
WOOD TO WOOD CONNECTIONS AT INTERIOR SIDE.

DETAILS ARE TYPICAL OF
STANDARD CONDITIONS AND
MAY NOT APPLY TO ALL
PROJECTS. REFER TO FINAL
PROJECT APPROVAL DRAWINGS
FOR SPECIFICATIONS. PLEASE
CONTACT FPI TECHNICAL
DEPARTMENT FOR QUESTIONS
AND/OR CONCERNS.

ROOF PANEL BACK CUT CONNECTION DETAIL

SCALE: 1" = 1'-0"



Foard
PANEL

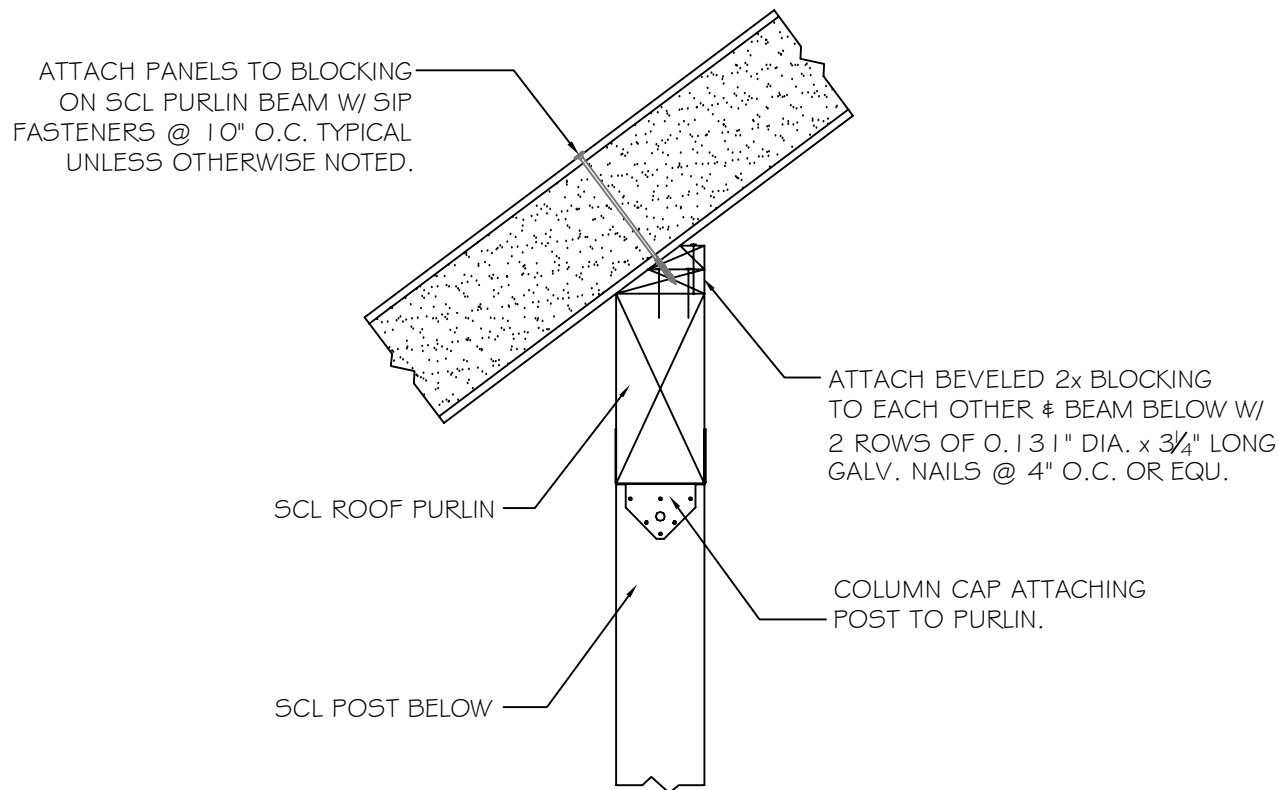
STRUCTURAL INSULATED PANELS
P.O. Box 185, 53 Slow Drive, W. Chesterfield, NH 03466

WWW.FOARDPANEL.COM

(800) - 644 - 8885

#55

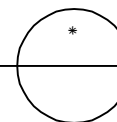
ROOF PANEL TO PURLIN CONNECTION



DETAILS ARE TYPICAL OF STANDARD CONDITIONS AND MAY NOT APPLY TO ALL PROJECTS. REFER TO FINAL PROJECT APPROVAL DRAWINGS FOR SPECIFICATIONS. PLEASE CONTACT FPI TECHNICAL DEPARTMENT FOR QUESTIONS AND/OR CONCERNS.

ROOF PANEL TO PURLIN CONNECTION

SCALE: 1" = 1'-0"



Foard
PANEL

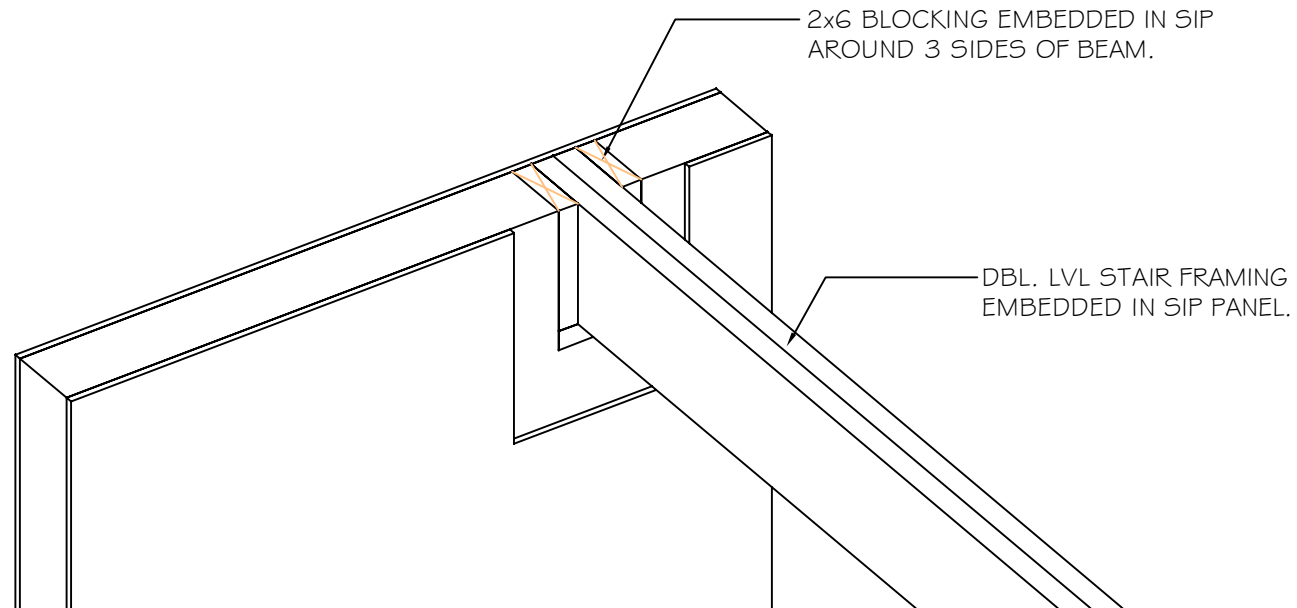
STRUCTURAL INSULATED PANELS
P.O. Box 185, 53 Slow Drive, W. Chesterfield, NH 03466

WWW.FOARDPANEL.COM

(800) - 644 - 8885

#56

BEAM POCKET PERSPECTIVE DETAIL

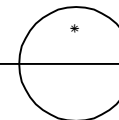


NOTE: INT. PANEL SKIN HELD BACK FOR DRAWING CLARITY.

- * INSTALL COLUMN UNDER BEAM (IF REQUIRED) IN PANEL PER TYPICAL DETAILS.
- * CUT OPENING THROUGH INTERIOR SKIN THE SAME SIZE AS THE SUPPORT BEAM.
- * REMOVE AREA OF FOAM LEAVING EXTERIOR SKIN FULLY INTACT, THEN FULL ROUT EDGES OF POCKET.
- * PAD SIDES OF BEAM END W/ 2X BLOCKING SIZED TO FIT INTO PANEL CORE.
- * LAND BEAM INTO POCKET SO THAT 2X BLOCKING KEYS BETWEEN BOTH PANEL SKINS. SECURE OSB PANEL SKINS, BOTH INTERIOR & EXTERIOR TO BLOCKING.
- * USE DRILL & FILL METHOD TO APPLY EXPANDING SEALANT THROUGHOUT ANY CREATED VOIDS.
- * ALSO FASTEN INTO END GRAIN OF SUPPORT BEAM THROUGH EXTERIOR SKINS.

BEAM POCKET PERSPECTIVE DETAIL

SCALE: 1" = 1'-0"



DETAILS ARE TYPICAL OF STANDARD CONDITIONS AND MAY NOT APPLY TO ALL PROJECTS. REFER TO FINAL PROJECT APPROVAL DRAWINGS FOR SPECIFICATIONS. PLEASE CONTACT FPI TECHNICAL DEPARTMENT FOR QUESTIONS AND/OR CONCERNS.

Foard
PANEL

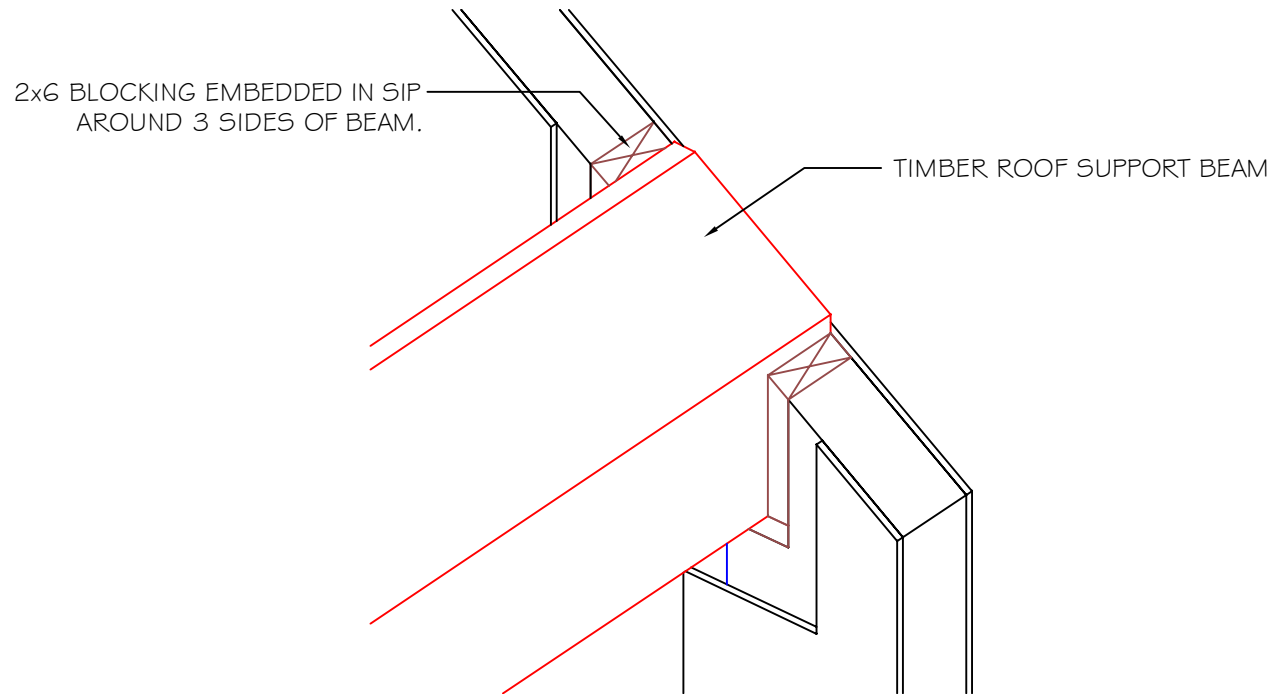
STRUCTURAL INSULATED PANELS
P.O. Box 185, 53 Slow Drive, W. Chesterfield, NH 03466

WWW.FOARDPANEL.COM

(800) - 644 - 8885

#57

BEAM POCKET PERSPECTIVE DETAIL

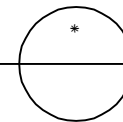


NOTE: INT. PANEL SKIN HELD BACK FOR DRAWING CLARITY.

- * INSTALL COLUMN UNDER BEAM (IF REQUIRED) IN PANEL PER TYPICAL DETAILS.
- * CUT OPENING THROUGH INTERIOR SKIN THE SAME SIZE AS THE SUPPORT BEAM.
- * REMOVE AREA OF FOAM LEAVING EXTERIOR SKIN FULLY INTACT, THEN FULL ROUT EDGES OF POCKET.
- * PAD SIDES OF BEAM END W/ 2X BLOCKING SIZED TO FIT INTO PANEL CORE.
- * LAND BEAM INTO POCKET SO THAT 2X BLOCKING KEYS BETWEEN BOTH PANEL SKINS. SECURE OSB PANEL SKINS, BOTH INTERIOR & EXTERIOR TO BLOCKING.
- * USE DRILL & FILL METHOD TO APPLY EXPANDING SEALANT THROUGHOUT ANY CREATED VOIDS.
- * ALSO FASTEN INTO END GRAIN OF SUPPORT BEAM THROUGH EXTERIOR SKINS.

BEAM POCKET PERSPECTIVE DETAIL

SCALE: 1" = 1'-0"



DETAILS ARE TYPICAL OF
STANDARD CONDITIONS AND
MAY NOT APPLY TO ALL
PROJECTS. REFER TO FINAL
PROJECT APPROVAL DRAWINGS
FOR SPECIFICATIONS. PLEASE
CONTACT FPI TECHNICAL
DEPARTMENT FOR QUESTIONS
AND/OR CONCERNS.

Foard
PANEL

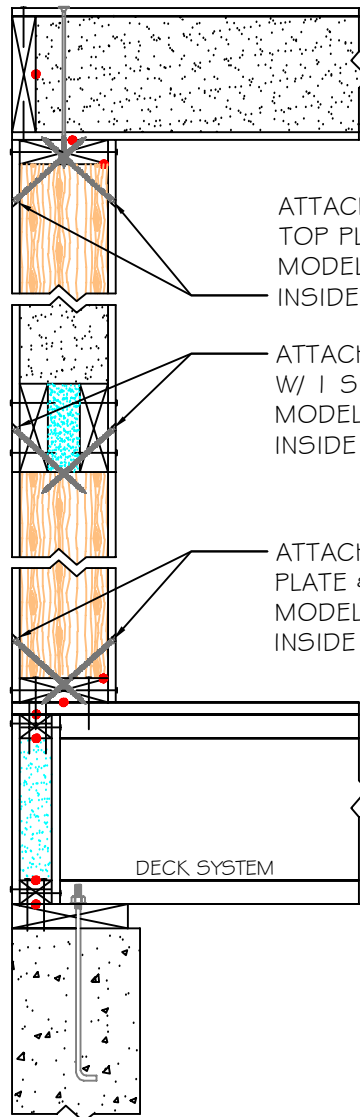
STRUCTURAL INSULATED PANELS
P.O. Box 185, 53 Slow Drive, W. Chesterfield, NH 03466

WWW.FOARDPANEL.COM

(800) - 644 - 8885

#58

KING STUD/WIND BRACING ATTACHMENT



ATTACH TOP OF KING STUD TO EMBEDDED TOP PLATE W/ 1 SIMPSON SCREW
 MODEL #: SDWC 15600 APPLIED FROM THE INSIDE & 1 FROM THE OUTSIDE.

ATTACH HEADER TO TOP OF JACK BELOW W/ 1 SIMPSON SCREW
 MODEL #: SDWC 15600 APPLIED FROM THE INSIDE & 1 FROM THE OUTSIDE.

ATTACH BOTTOM OF BLOCKING TO CLEAT PLATE & SUBFLOOR W/ 1 SIMPSON SCREW
 MODEL #: SDWC 15600 APPLIED FROM THE INSIDE & 1 FROM THE OUTSIDE.

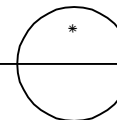
DECK SYSTEM

NOTE: ALL RED DOTS - APPLY CONTINUOUS $\frac{3}{8}$ " DIA. BEAD OF MASTIC SEALANT AT WOOD TO FOAM & WOOD TO WOOD CONNECTIONS AT INTERIOR SIDE.

DETAILS ARE TYPICAL OF STANDARD CONDITIONS AND MAY NOT APPLY TO ALL PROJECTS. REFER TO FINAL PROJECT APPROVAL DRAWINGS FOR SPECIFICATIONS. PLEASE CONTACT FPI TECHNICAL DEPARTMENT FOR QUESTIONS AND/OR CONCERNS.

KING STUD & WIND BRACING ATTACHMENT

SCALE: 1" = 1'-0"



Foard
 PANEL

STRUCTURAL INSULATED PANELS
 P.O. Box 185, 53 Slow Drive, W. Chesterfield, NH 03466

WWW.FOARDPANEL.COM

(800) - 644 - 8885

#59

PANEL SILL CONNECTION W/ HOLD-DOWN

CONT. BLOCKING REQUIRED BEHIND ALL HOLD-DOWNS, SEE PANEL LAYOUTS FOR BLOCKING SPEC.

SIMPSON HOLD-DOWN EMBEDDED IN PANEL, SEE PANEL LAYOUTS FOR HOLD-DOWN LOCATIONS & SPECS.

INSTALL HOLD-DOWN TIGHT AGAINST INTERIOR OSB PANEL SKIN.

SIP RIM PANEL

DECK SYSTEM

2x8 P.T. SILL PLATE

ADD VERTICAL GRAIN SQUASH BLOCKING BELOW POST BY OTHERS.

ANCHOR BOLTS BY OTHERS.

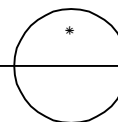
FOUNDATION WALL

THREADED ROD EPOXIED INTO CONC., SEE DWG'S FOR REQUIRED THREADED ROD EMBEDMENT DEPTH. THRD. ROD MUST NOT PENETRATE I-JOIST.

NOTE: ALL RED DOTS - APPLY CONTINUOUS 3/8" DIA. BEAD OF MASTIC SEALANT AT WOOD TO FOAM & WOOD TO WOOD CONNECTIONS AT INTERIOR SIDE.

PANEL SILL CONNECTION W/ HOLD-DOWN

SCALE: 1" = 1'-0"



DETAILS ARE TYPICAL OF STANDARD CONDITIONS AND MAY NOT APPLY TO ALL PROJECTS. REFER TO FINAL PROJECT APPROVAL DRAWINGS FOR SPECIFICATIONS. PLEASE CONTACT FPI TECHNICAL DEPARTMENT FOR QUESTIONS AND/OR CONCERNS.

Foard
PANEL

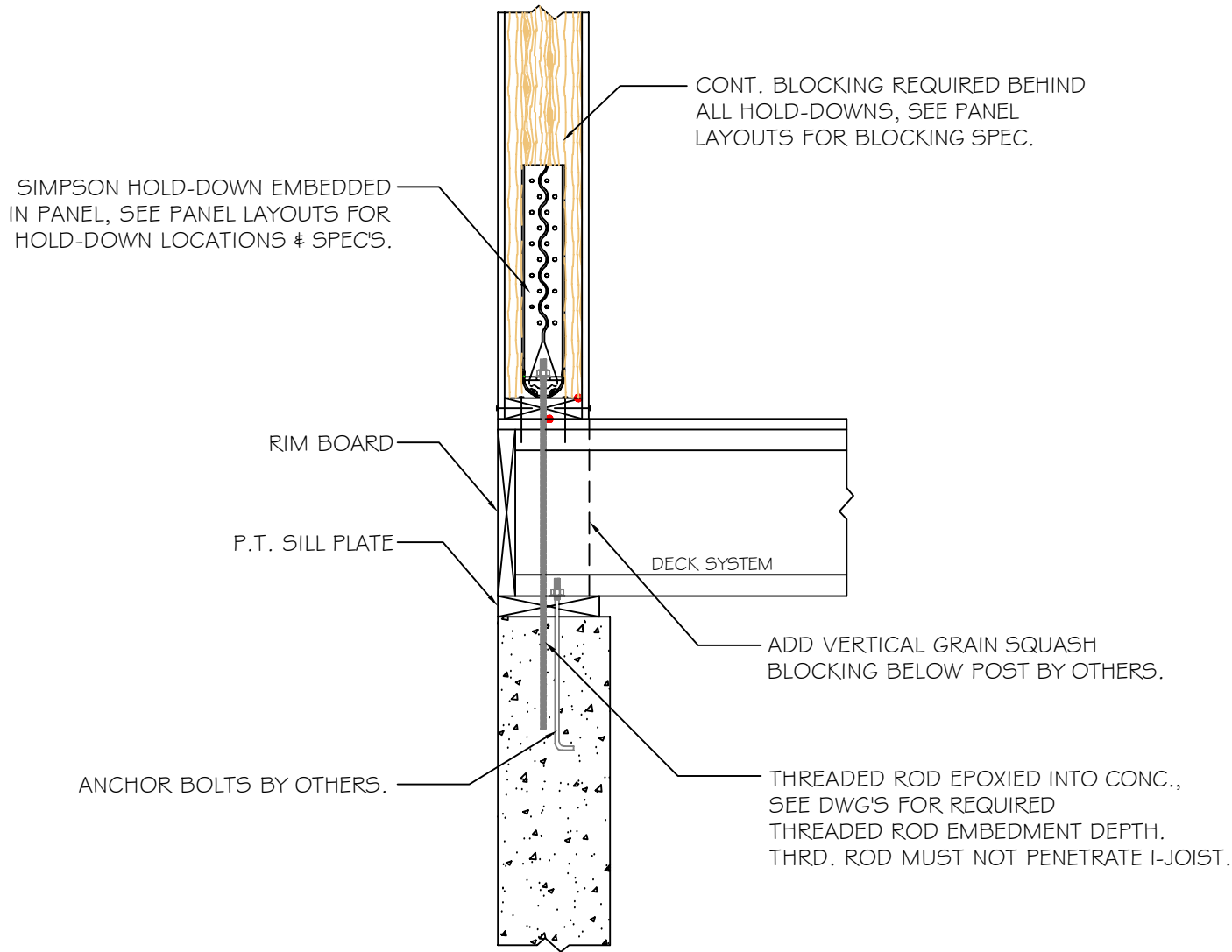
STRUCTURAL INSULATED PANELS
P.O. Box 185, 53 Slow Drive, W. Chesterfield, NH 03466

WWW.FOARDPANEL.COM

(800) - 644 - 8885

#60

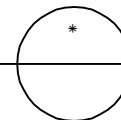
PANEL SILL CONNECTION W/ HOLD-DOWN



NOTE: ALL RED DOTS - APPLY CONTINUOUS $\frac{3}{8}$ " DIA. BEAD OF MASTIC SEALANT AT WOOD TO FOAM & WOOD TO WOOD CONNECTIONS AT INTERIOR SIDE.

DETAILS ARE TYPICAL OF STANDARD CONDITIONS AND MAY NOT APPLY TO ALL PROJECTS. REFER TO FINAL PROJECT APPROVAL DRAWINGS FOR SPECIFICATIONS. PLEASE CONTACT FPI TECHNICAL DEPARTMENT FOR QUESTIONS AND/OR CONCERNS.

PANEL SILL CONNECTION W/ HOLD-DOWN
SCALE: 1" = 1'-0"



Foard
PANEL

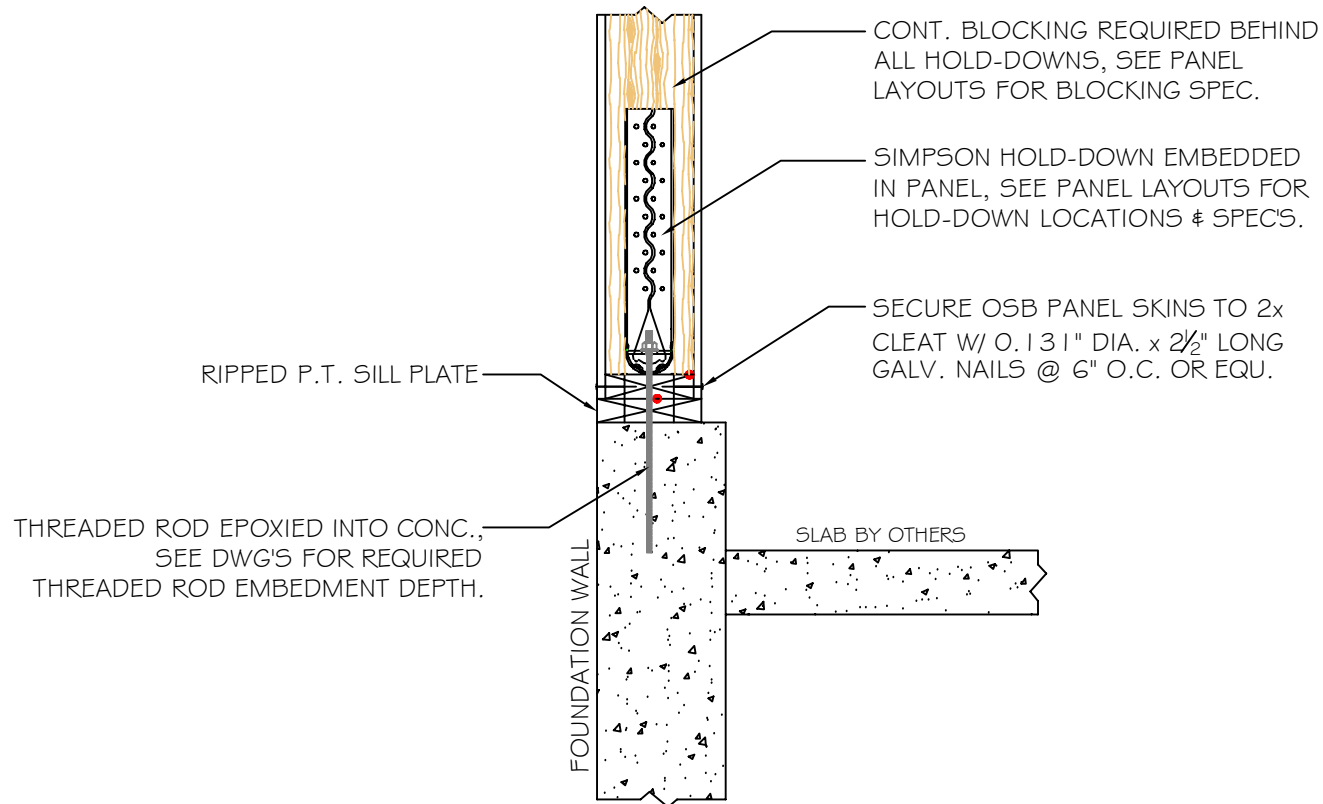
STRUCTURAL INSULATED PANELS
P.O. Box 185, 53 Slow Drive, W. Chesterfield, NH 03466

WWW.FOARDPANEL.COM

(800) - 644 - 8885

#61

PANEL SILL CONNECTION W/ HOLD-DOWN



THREAD ROD EPOXIED INTO CONC., SEE DWG'S FOR REQUIRED THREAD ROD EMBEDMENT DEPTH.

CONT. BLOCKING REQUIRED BEHIND ALL HOLD-DOWNS, SEE PANEL LAYOUTS FOR BLOCKING SPEC.

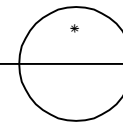
SIMPSON HOLD-DOWN EMBEDDED IN PANEL, SEE PANEL LAYOUTS FOR HOLD-DOWN LOCATIONS & SPECS.

SECURE OSB PANEL SKINS TO 2x CLEAT W/ 0.131" DIA. x 2 1/2" LONG GALV. NAILS @ 6" O.C. OR EQU.

NOTE: ALL RED DOTS - APPLY CONTINUOUS 3/8" DIA. BEAD OF MASTIC SEALANT AT WOOD TO FOAM & WOOD TO WOOD CONNECTIONS AT INTERIOR SIDE.

DETAILS ARE TYPICAL OF STANDARD CONDITIONS AND MAY NOT APPLY TO ALL PROJECTS. REFER TO FINAL PROJECT APPROVAL DRAWINGS FOR SPECIFICATIONS. PLEASE CONTACT FPI TECHNICAL DEPARTMENT FOR QUESTIONS AND/OR CONCERNS.

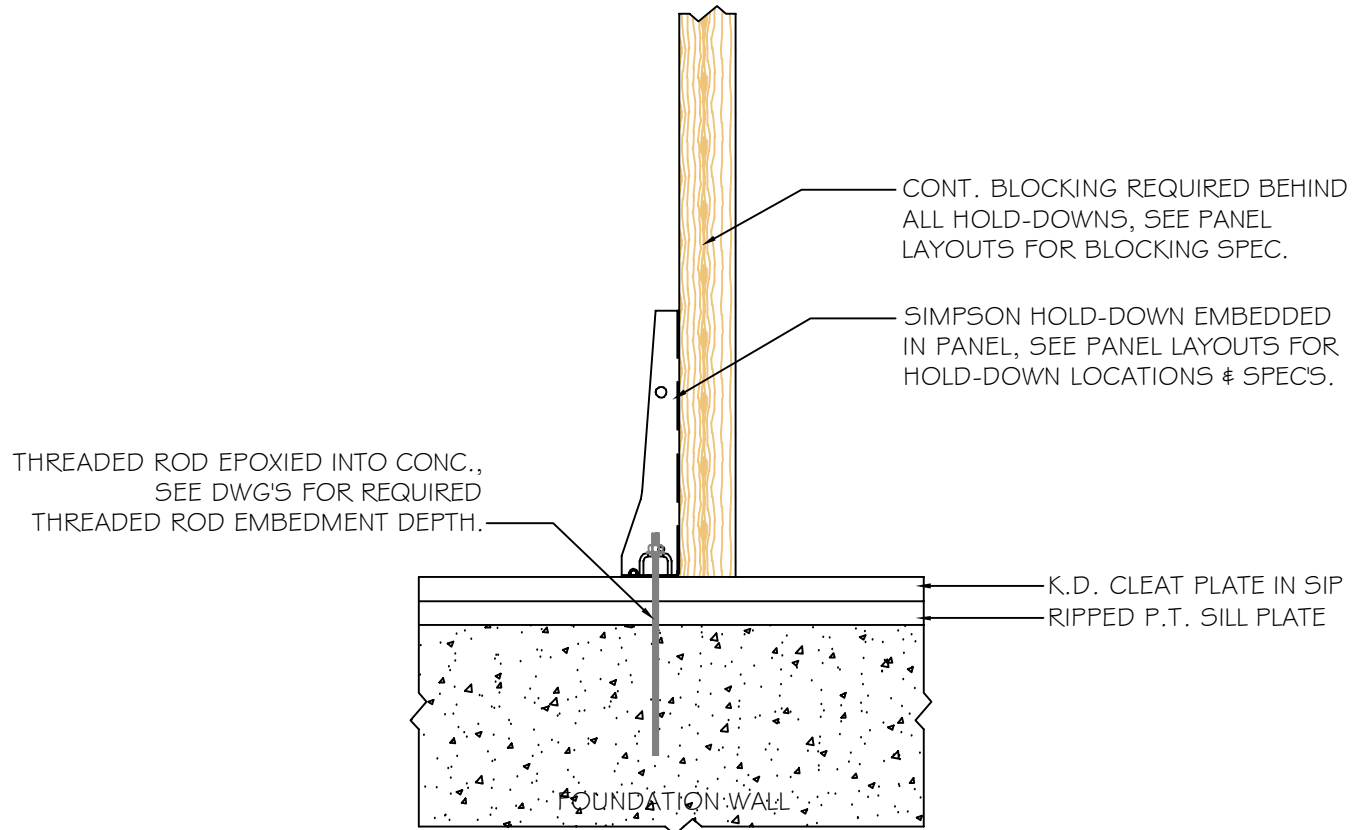
PANEL SILL CONNECTION W/ HOLD-DOWN
SCALE: 1" = 1'-0"



Foard
PANEL
STRUCTURAL INSULATED PANELS
P.O. Box 185, 53 Slow Drive, W. Chesterfield, NH 03466
WWW.FOARDPANEL.COM
(800) - 644 - 8885

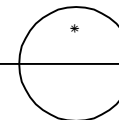
#62

PANEL SILL CONNECTION W/ HOLD-DOWN



DETAILS ARE TYPICAL OF STANDARD CONDITIONS AND MAY NOT APPLY TO ALL PROJECTS. REFER TO FINAL PROJECT APPROVAL DRAWINGS FOR SPECIFICATIONS. PLEASE CONTACT FPI TECHNICAL DEPARTMENT FOR QUESTIONS AND/OR CONCERNS.

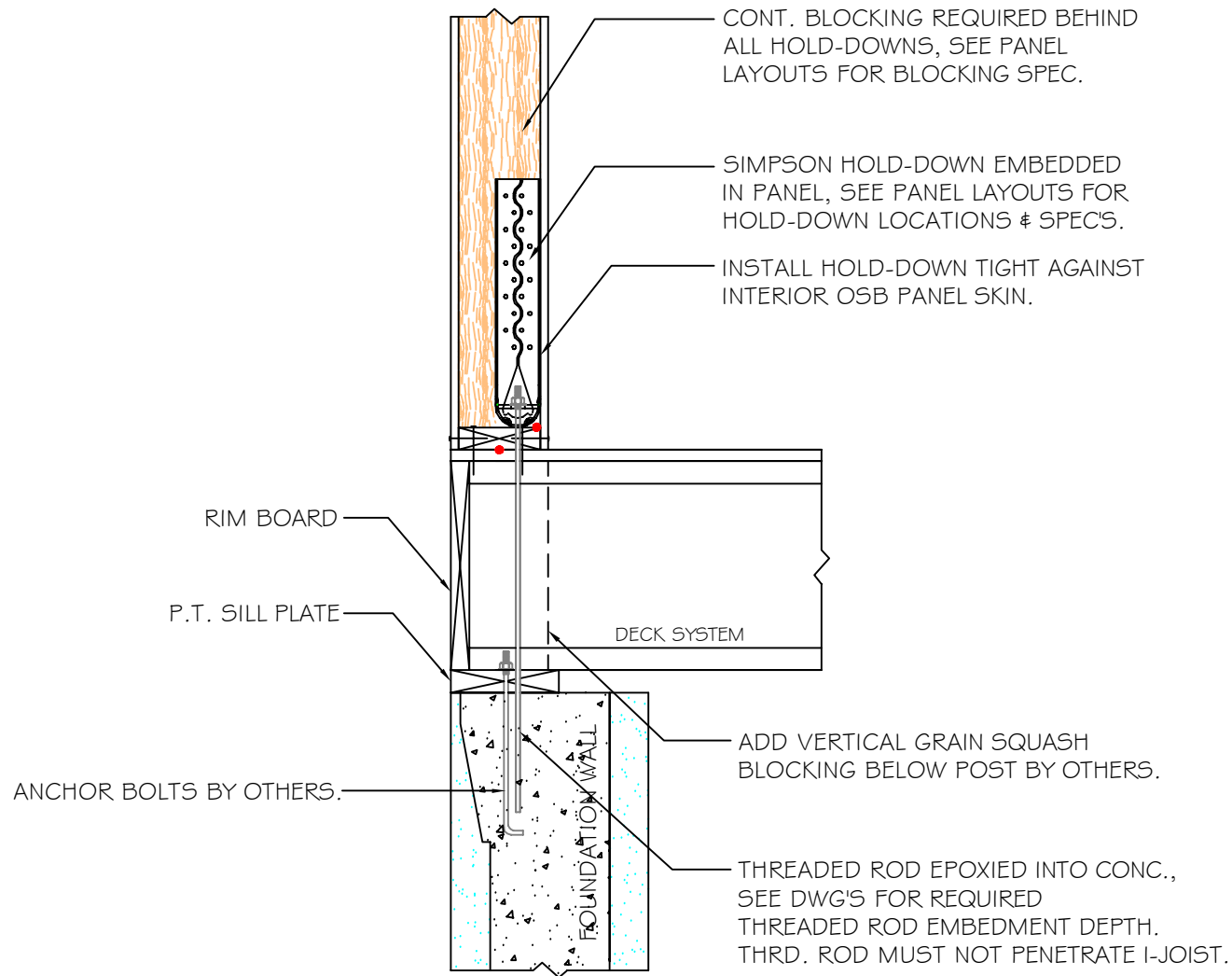
PANEL SILL CONNECTION W/ HOLD-DOWN
SCALE: 1" = 1'-0"



Foard
PANEL
STRUCTURAL INSULATED PANELS
P.O. Box 185, 53 Slow Drive, W. Chesterfield, NH 03466
WWW.FOARDPANEL.COM
(800) - 644 - 8885

#63

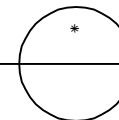
PANEL SILL CONNECTION W/ HOLD-DOWN



NOTE: ALL RED DOTS - APPLY CONTINUOUS $\frac{3}{8}$ " DIA. BEAD OF MASTIC SEALANT AT WOOD TO FOAM & WOOD TO WOOD CONNECTIONS AT INTERIOR SIDE.

DETAILS ARE TYPICAL OF STANDARD CONDITIONS AND MAY NOT APPLY TO ALL PROJECTS. REFER TO FINAL PROJECT APPROVAL DRAWINGS FOR SPECIFICATIONS. PLEASE CONTACT FPI TECHNICAL DEPARTMENT FOR QUESTIONS AND/OR CONCERNS.

PANEL SILL CONNECTION W/ HOLD-DOWN
SCALE: 1" = 1'-0"



Foard
PANEL

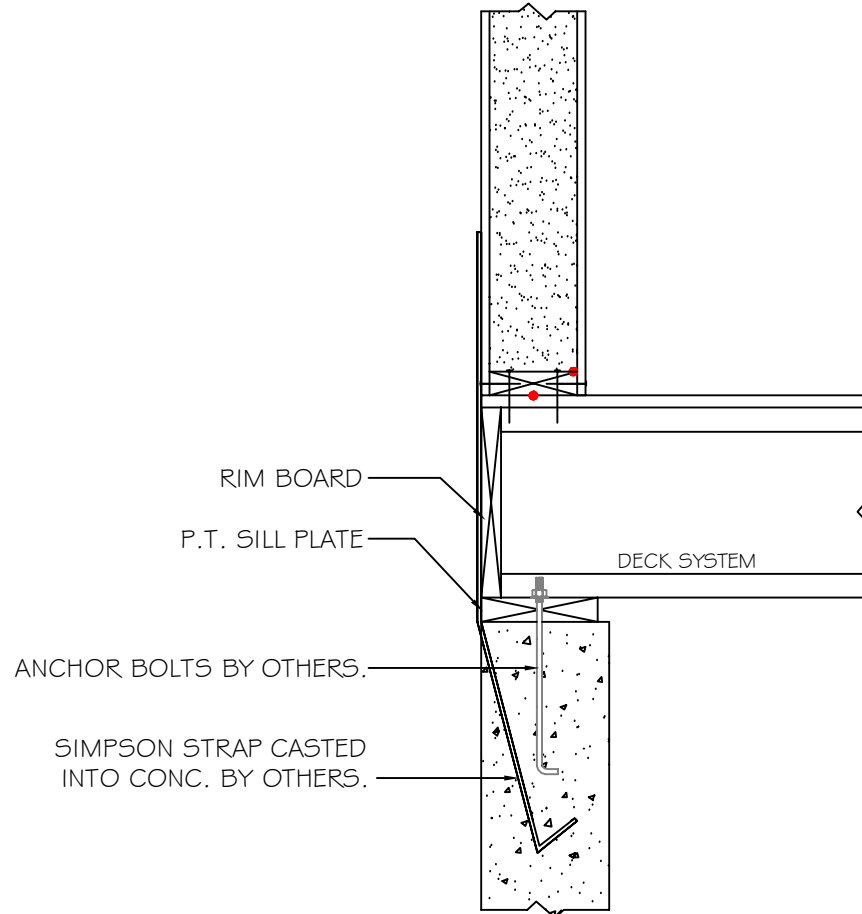
STRUCTURAL INSULATED PANELS
P.O. Box 185, 53 Slow Drive, W. Chesterfield, NH 03466

WWW.FOARDPANEL.COM

(800) - 644 - 8885

#64

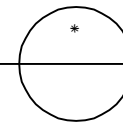
PANEL SILL CONNECTION W/ CAST-IN-STRAP



NOTE: ALL RED DOTS - APPLY CONTINUOUS $\frac{3}{8}$ " DIA. BEAD OF MASTIC SEALANT AT WOOD TO FOAM & WOOD TO WOOD CONNECTIONS AT INTERIOR SIDE.

PANEL SILL CONNECTION W/ CAST-IN-STRAP
SCALE: 1" = 1'-0"

DETAILS ARE TYPICAL OF STANDARD CONDITIONS AND MAY NOT APPLY TO ALL PROJECTS. REFER TO FINAL PROJECT APPROVAL DRAWINGS FOR SPECIFICATIONS. PLEASE CONTACT FPI TECHNICAL DEPARTMENT FOR QUESTIONS AND/OR CONCERNS.



Foard
PANEL

STRUCTURAL INSULATED PANELS
P.O. Box 185, 53 Slow Drive, W. Chesterfield, NH 03466

WWW.FOARDPANEL.COM

(800) - 644 - 8885